

Royal 340 Shadow

824263SDW

POWER FEATURES

- 8.8 kwh stainless steel Dual-Tube™ burner system
- 2.7 kwh powerful side burner

COOKING SYSTEM

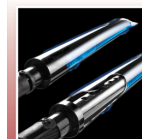
- 3356 sq. cm. total cooking surface including chrome coated warming rack
- 2258 sq. cm. primary cooking surface
- Flav-R-Cast™ Iron grids
- Stainless steel Flav-R-Wave™ cooking system
- Three stainless steel Dual-Tube™ burners
- Linear Flow valves with 180° precision control
- Sure-Lite™ electronic ignition system
- Deluxe Accu-Temp™ thermometer

DESIGN AND STYLING

- Therma-Cast aluminium oven with black porcelain enameled lid insert
- Black painted steel drop down side shelves with integrated tool hooks
- Black painted control panel
- Enclosed cabinet with black powder coat cabinet doors
- 18 cm wheels with decorative grey accent and 6.4 cm locking casters

WARRANTY

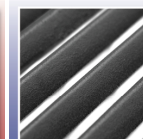
- 10 years on Therma-Cast™ aluminium oven
- 5 years on stainless steel Dual-Tube™ burner system
- 2 years on remaining parts and paint



Stainless Steel Dual-Tube™ Burner System



Powerful Cast Iron Side Burner



Flav-R-Cast™ Iron Grids



Stainless Steel Flav-R-Wave™ Cooking System



Stylish Steel Side Shelves