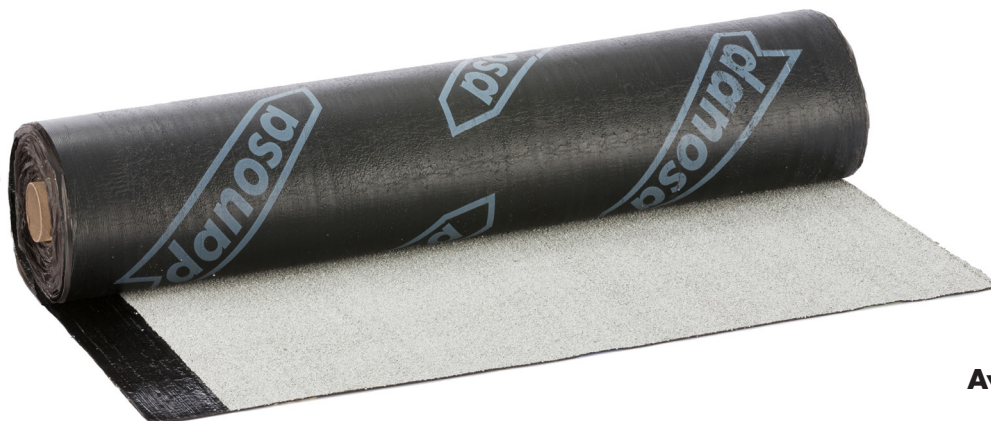




INCLEMENCY PHOTOCATALYTIC BITUMINOUS MEMBRANE FOR WATERPROOFING OF ROOFS



Available colours



Watertight



High tear
resistance



High tensile
strength



High puncture
resistance



High dimensional
stability



Good application
to support



Resistant to
UV



Decontaminant



ETE
Accreditation

POLYDAN® NOx 180-50/GP ELAST+ is an asphalt sheet made up of a heavy weight non-woven polyester felt reinforcement, covered on both sides with a bitumen mastic (SBS), finished on the outside with colored slate white, with photocatalytic coating, as a protection material and on its inner face, as a non-stick material, it incorporates a plastic finishing film.

ADVANTAGES

- Performance in the photocatalytic purification of NOx > 8 % (Class 3).
- Total impermeability to water and water vapor.
- Decontaminating sheet of NOx particles.
- Excellent long-term durability.
- Great resistance to tearing.
- Great tensile strength and great elongation at break.
- Great resistance to static and dynamic punching.
- Rot-proof.
- Very stable in the long term.
- High dimensional stability.

USES

- Single-layer membrane for waterproofing self-protected roofs adhered.
- Top sheet of multilayer membranes for waterproofing roofs with mineral self-protection.

SUPPORTS

- In rehabilitation of roofs with heavy attached, non-attached or floating protection and self-protected adhered.
- Concrete and mortar supports.
- On thermal insulation.



METHOD OF APPLICATION

- Cleaning of the support.
- Apply bituminous primer on mortar or concrete supports, CURIDAN®.
- In the case of thermal insulation, the plates will be placed in joints and without gaps between plates greater than 0.5 cm.
- The sheet is arranged in the same direction as the bottom sheet, with the overlap line displacing half the roll.
- The sheet is fully welded to the bottom.
- The overlaps must be welded and will be 8 cm in the longitudinal direction and 10 cm in the transverse direction, soaking the protective aggregate if necessary.

APPLICATION TEMPERATURE

- From -5 ° C.
- Do not apply on frozen or wet surfaces.

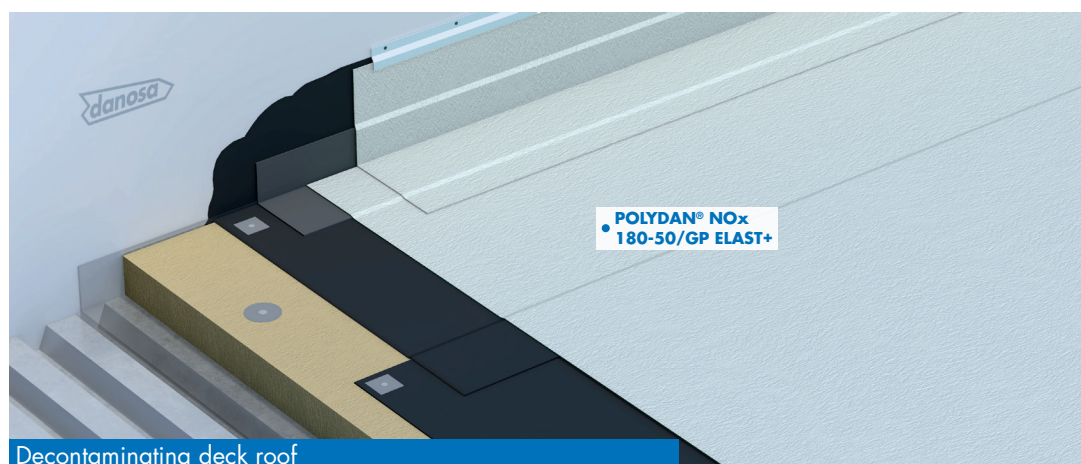
PRODUCT RANGE

Product name	Colour	Weight (kg/m ²)	Dimensions (m)	m ² /pallet	Rolls/pallet
POLYDAN® NOx 180-50/GP ELAST+	White	5,0	1 x 8	200	25
POLYDAN® NOx 180-60/GP ELAST+	White	5,6	1 x 8	184	23

STORAGE & CONSERVATION

- Store in a dry place, protected from rain, sun and high and low temperatures.
- The storage position will be vertical.
- Pallets will not stack. If you want to store at height, the shelves must have crossbars or reinforcements under the wooden pallet.
- Before handling the pallet, the condition of the shrink will be checked to reinforce it if necessary.
- Handle with a crane with a protective net.

COMPATIBLE SOLUTIONS



Decontaminating deck roof

