

# POLYDAN® NOx PLUS FM 180-50 GP ELAST+

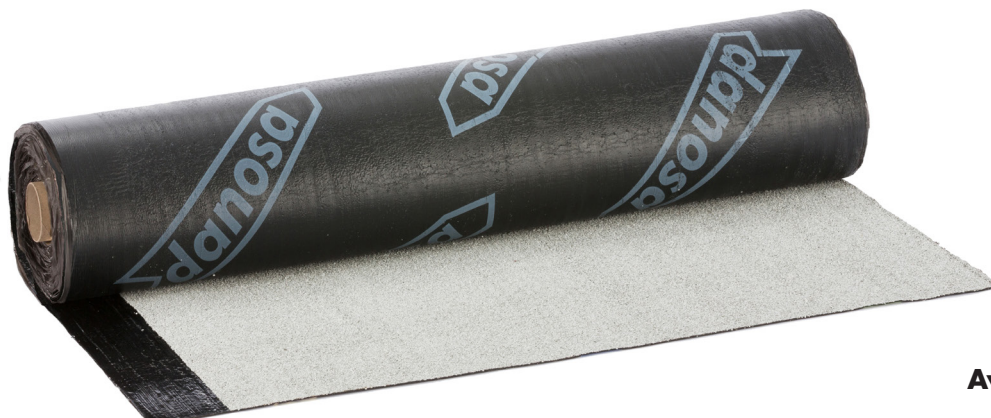
## INCLEMENCY PHOTOCATALYTIC BITUMINOUS MEMBRANE FOR WATERPROOFING OF ROOFS



Certification:  
ETE No. 06/0058



WATERPROOFING



### Available colours



Watertight



Decontaminant



High tensile  
strength



High puncture  
resistance



High  
dimensional  
stability



Good  
application  
to support



Resistant to  
UV



High tear  
resistance



ETE  
Accreditation

POLYDAN® NOx PLUS F.M. 180-50/GP ELAST+ is an asphalt sheet made up of a reinforced, stabilized polyester felt, heavyweight, covered on both sides with a bitumen mastic (SBS), finished on the outside with white slate and photocatalytic coating, as a protection and on its inner face as a non-stick material, it incorporates a plastic finishing film.

### ADVANTAGES

- Performance in the photocatalytic purification of NOx > 8% (Class 3).
- Total impermeability to water and water vapor.
- Great resistance to tearing.
- Great tensile strength and elongation at break.
- High resistance to static and dynamic punching.
- Great dimensional stability and good absorption of structural movements.
- Easy adaptation to the support.
- The mineral finish provides UV resistance to the sheet.
- Self-healing and rot-proof.

### USES

- Self-protected single-layer membrane mechanically fixed on the deck, both in new construction and in renovation.
- Top sheet of multilayer membranes for waterproofing roofs with mineral self-protection.

### SUPPORTS

- In rehabilitation of roofs with heavy attached, non-attached or floating protection and self-protected adhered.
- Concrete and mortar supports.
- On thermal insulation.
- Metal "deck" type support.



## METHOD OF APPLICATION

- Cleaning of the support.
- Apply bituminous primer on mortar or concrete supports, CURIDAN®.
- In the case of thermal insulation, the plates will be placed in joints and without gaps between plates greater than 0.5 cm.
- The sheet is arranged in the same direction as the bottom sheet, with the overlap line displacing half the roll.
- The sheet is fully welded to the bottom.
- The 12 cm overlaps will be welded, soaking the protective aggregate if necessary.

### Mechanically fixed membrane on deck deck

- The rolls are arranged loose on the support, perpendicular to the ribs of the corrugated sheet.
- The sheet is mechanically fixed in the area of the overlap.
- The fixing will always be done on the crest of the corrugated sheet.
- The distance between the edge of the sheet and the fixing washer will be 2-3 cm.
- The minimum distance between fixings will be 18 cm and the maximum will be 36 cm.
- The recommended setting can be found in the ETE No. 06/0058.

## APPLICATION TEMPERATURE

- From -5 ° C.
- Do not apply on frozen or wet surfaces.

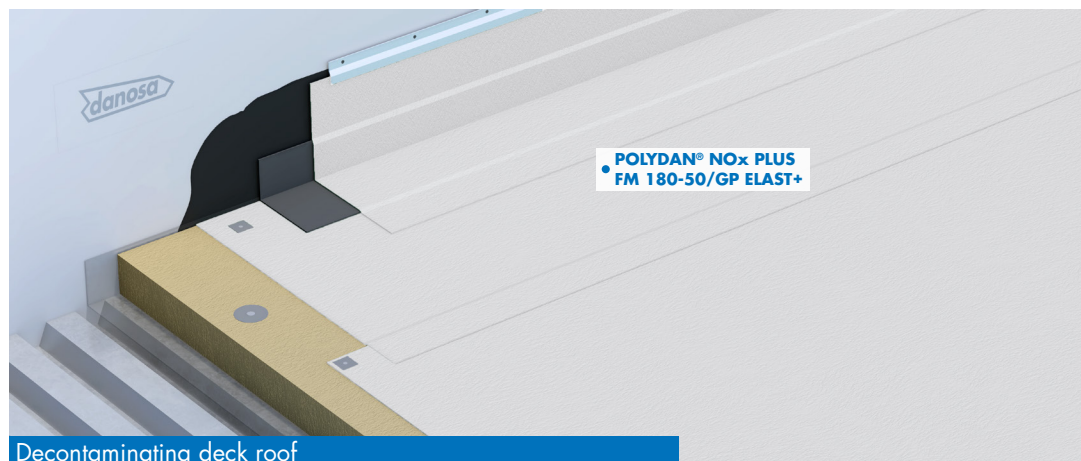
## PRODUCT RANGE

Product name	Colour	Weight (kg/m <sup>2</sup> )	Dimensions (m)	m <sup>2</sup> /pallet	Rolls/pallet
<b>POLYDAN® NO<sub>x</sub> PLUS F.M. 180-50/ GP ELAST+</b>	White	5,0	1 x 8	184	23
<b>POLYDAN® NO<sub>x</sub> PLUS F.M. 180-60/ GP ELAST+</b>	White	5,6	1 x 8	184	23

## STORAGE & CONSERVATION

- Store in a dry place, protected from rain, sun and high and low temperatures.
- The storage position will be vertical.
- Pallets will not stack. If you want to store at height, the shelves must have crossbars or reinforcements under the wooden pallet.
- Before handling the pallet, the condition of the shrink will be checked to reinforce it if necessary.
- Handle with a crane with a protective net.

## COMPATIBLE SOLUTIONS



Decontaminating deck roof

