

Installation instruction



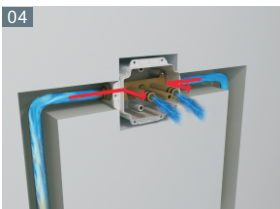
01  
Connect both inlet pipes onto two inlet connectors of the box, tighten with spanner. According to the above connected pipes and concealed box, dig the relative channel and space of the pipe and box on the wall.



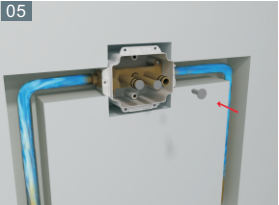
02  
Use the horizontal ruler to adjust the X-box to ensure it is fixed horizontally; 4 corners with screw holes are positioned correctly for next step.



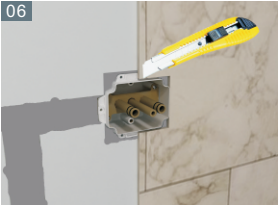
03  
Drill relative holes and insert the plastic dowels; put the X-box into the empty space and fix with screws on 4 corners.



04  
Turn on water of the connected pipes, until all the dirt inside the pipes are cleaned so as not to effect the spraying function of the shower head.



05  
Block two outlets with two rubber plugs, turn on the water again, check all the connected pipes to ensure there is no leakage.



06  
After the inspection with no leakage, please bury the pipe with cement, inlay the tiles, then cut the extra cement to make it perfectly embedded.

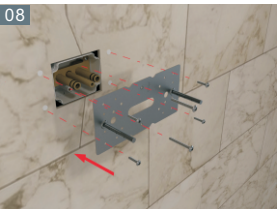


07  
According to the size of the steel board, drill 4 screw holes on the wall, insert with dowels.

03

04

Installation instruction



08/09  
Screw the relative holes on the steel board.



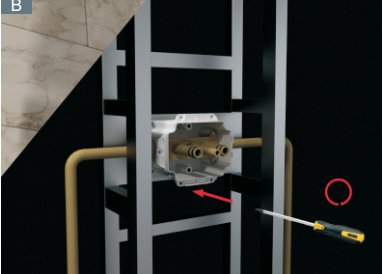
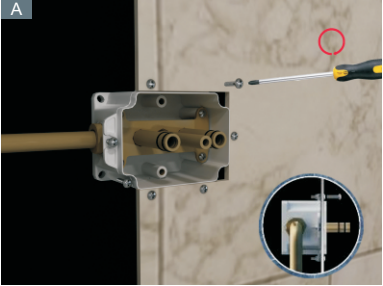
09  
Connect the shower body to the outlet, tighten with spanner.



10  
Cover the steel board with another flange shell, clean with wet cloth. Installation complete.



11  
Cover the steel board with another flange shell, clean with wet cloth. Installation complete.

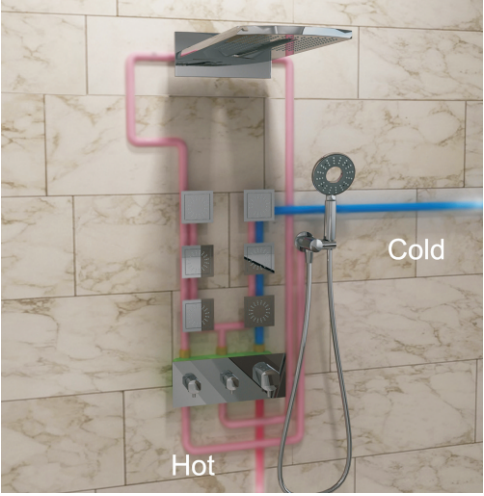


A/B  
If the X-box have to be installed on the wooden thin walls, you should fix the screws of 4 edges external side of the box, or internal side of the box.

05

06

Installation instruction



02



INSTALLATION INSTRUCTION

