

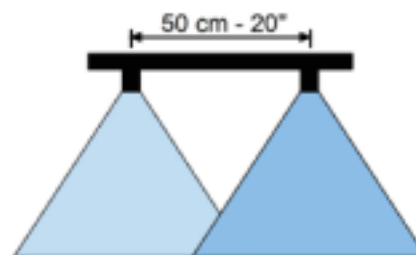
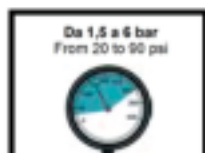
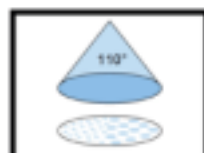
UGELLO AIRMIX 110°

BUSE AIRMIX 110°

AIRMIX 110° NOZZLE

DÜSE AIRMIX 110°

BOQUILLA AIRMIX 110°



Note: Materiali: materiali plastici ad alta resistenza (Kematal POM). Impiego: trattamenti fungicidi ed insetticidi su macchine per trattamenti a tutto campo. Ugello anti deriva ad iniezione d'aria. Di facile pulizia. Dimensioni compatte (lunghezza 22 mm). Ghiera applicabili: 08231 - 08235 - 08239

Notes: Materials: high resistance plastic materials (Kematal POM). Use: fungicide and insecticide applications on boom sprayers. Air injection anti drift flat fan spray tip. Easy cleaning. Compact size (22mm/0,866"length). Applicable quick-fitting caps item: 08231 - 08235 - 08239

Filtro - Filter	Articolo	Bar	L/min	Velocità - Speed Km/h					
				4	5	6	8	10	12
50 Mesh	85908	10	0.23	69	56	46	34	28	23
		15	0.28	84	68	57	42	34	28
		20	0.33	98	78	65	49	39	33
		25	0.37	110	88	73	55	44	37
		3.0	0.40	120	96	80	60	48	40
		40	0.46	138	111	93	69	56	46
		50	0.52	156	125	104	78	62	52
		60	0.57	171	137	114	86	68	57
	85909	10	0.35	104	83	69	52	42	35
		15	0.42	127	102	85	64	51	42
		20	0.49	147	118	98	74	59	49
		25	0.55	164	132	110	82	66	55
		3.0	0.60	180	144	120	90	72	60
		40	0.69	208	166	139	104	83	69
		50	0.77	233	188	155	116	93	78
		60	0.85	255	204	170	127	102	85
	85910	10	0.46	139	111	92	69	55	46
		15	0.57	170	136	113	85	68	57
20		0.65	196	157	131	98	78	65	
25		0.73	219	175	146	110	88	73	
3.0		0.80	240	192	160	120	96	80	
40		0.92	277	222	185	139	111	92	
50		1.03	310	248	207	155	124	103	
60		1.13	339	271	226	170	136	113	
24 Mesh	85911	10	0.69	208	166	139	104	83	69
		15	0.85	255	204	170	127	102	85
		20	0.98	294	235	196	147	118	98
		25	1.10	329	263	219	164	131	110
		3.0	1.20	360	288	240	180	144	120
		40	1.39	416	333	277	208	166	139
	85912	50	1.55	465	372	310	232	186	155
		60	1.70	509	407	339	255	204	170
		10	0.92	277	222	185	139	111	92
		15	1.13	339	271	226	170	136	113
		20	1.31	392	313	261	196	157	131
		25	1.46	438	351	292	219	175	146
3.0	1.60	480	384	320	240	192	160		
40	1.85	554	444	370	277	222	185		
50	2.07	620	496	413	310	248	207		
60	2.26	679	543	453	339	272	226		

LITRI PER ETTARO - Liters for hectare