

AZUD PREMIER

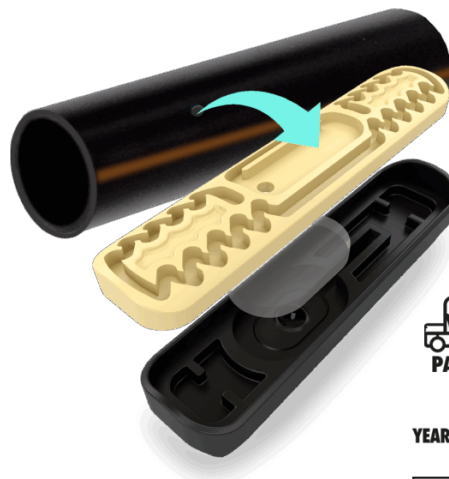


Heavywall thickness dripline with integrated pressure-compensating (PC) flat dripper, anti-siphon (PC AS), and/or anti-drain(CNL/HCNL)

Ideal for poor quality water and/or organic fertilizers.

Technical characteristics

- **Expected useful life:** More than 10 years
- **Dripper type:** Integrated self-compensating
- **Functionality:** PC, PC AS, CNL/HCNL
- **Topography:** Uneven terrain, flat terrain
- **Type of installation:** Sub-surface, On surface and pots



Unique selling points



Anti-clogging

Patented self-cleaning DS TECHNOLOGY labyrinth with wide flow passages
Large particle retention area in the HEX three-dimensional filter



Uniformity

Constant flow and very low CV thanks to the injected floating SILITEC membrane
Stable and precise self-compensation with the ELIPSIS chamber, minimizing mechanical stress on the membrane



Anti-roots

Root-intrusion delaying effect through the PIR physical barrier
Root repellent effect with the copper oxide chemical barrier (AZUD PREMIER CU version)



Reliability

Only manufacturer certified in accordance with ISO 9261. Guaranteed performance and quality, backed by a 6-year warranty
High impact resistance, UV protection, and resistance to irrigation chemicals

Features

Model	Functionality	Benefit	Ideal for
PC	Pressure-compensating	It ensures uniform distribution of flow and nutrients throughout the entire system across a wide range of pressures	Irrigation on uneven terrain
PC AS	Pressure-compensating and anti-siphon	Ensures uniform flow and nutrient distribution throughout the system and prevents particles from entering the emitter in subsurface drip irrigation applications	Sub-surface drip irrigation
CNL/HCNL	Pressure-compensating and anti-drain	Improves the uniformity of water and nutrient application by reducing the system's loading and unloading times	Pulse irrigation
POT	Pressure-compensating and anti-drain	A solution with a built-in anti-drain dripper designed for container-grown crops that reduces installation time, labor, and operational tasks	Soilless crops drip irrigation
CU	Pressure-compensating and anti-siphon or anti-drain	It contains copper oxide integrated into the dripper, a technology that remains active throughout the product's lifespan without being washed away, worn down, or leached out, acting as a root-repellent barrier	Sub-surface drip irrigation with extra root protection

Dripper technical data

Functionality	Dripper	Nominal flow rate	Filtration area	K	X	Pressure-compensating range	Shut off pressure	Recommended filtration degree
		l/h	mm ²			bar	bar	micron
PC	1L	1,00	153	1,00	0	0.5 - 4		130
	1.6L	1,60	153	1,60	0	0.5 - 4		130
	2L	2,00	153	2,00	0	0.5 - 4		130
	2.3L	2,30	153	2,30	0	0.5 - 4		130
	3L	3,00	153	3,00	0	0.5 - 4		130
	3.5L	3,50	153	3,50	0	0.5 - 4		130
PC AS	1L	1,00	153	1,00	0	0.5 - 4		130
	1.6L	1,60	153	1,60	0	0.5 - 4		130
	2L	2,00	153	2,00	0	0.5 - 4		130
	2.3L	2,30	153	2,30	0	0.5 - 4		130
	3L	3,00	153	3,00	0	0.5 - 4		130
	3.5L	3,50	153	3,50	0	0.5 - 4		130
CNL	1L	1,00	153	1,00	0	1 - 4	0,14	130
	1.6L	1,60	153	1,60	0	1 - 4	0,14	130
	2.4L	2,35	153	2,35	0	1 - 4	0,14	130
	3.6L	3,60	153	3,60	0	1 - 4	0,14	130
HCNL	1.3L	1,30	153	1,30	0	1.5 - 4	0,25	130
	2L	1,95	153	1,95	0	1.5 - 4	0,25	130
	3L	2,95	153	2,95	0	1.5 - 4	0,25	130
	4.5L	4,45	153	4,45	0	1.5 - 4	0,25	130

AZUD manufacturing standard in accordance with ISO 9261

Dripline technical data

Model	Inner diameter	Thickness	Max. Pressure	KD
	mm	mm	bar	
16	13,9	0,9*	4	1,6
	13,9	1	4	1,6
	13,9	1,1	4	1,6
	13,9	1,2	4	1,6
20	17,5	1,1	4	0,4
	17,5	1,2	4	0,4

*Not available in CNL and HCNL versions
Available colors: Black - White



Maximum dripline length (m)

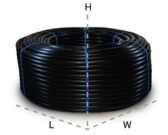
Functionality	Model	Dripper	Distance between drippers (m)										
			0.2	0.25	0.3	0.33	0.4	0.5	0.6	0.75	1	1.25	1.5
PC	16	1L	121	149	176	191	227	276	323	389	493	588	677
		1.6L	89	109	129	141	167	203	238	287	363	434	500
		2L	77	94	111	121	144	176	205	248	314	375	432
		2.3L	70	86	101	111	132	160	187	226	286	343	395
		3L	59	72	85	93	110	135	157	190	241	288	332
	20	3.5L	53	65	77	84	100	122	142	172	218	260	300
		1L	234	283	329	355	414	493	566	669	825	968	1.098
		1.6L	172	208	242	261	305	363	418	494	609	714	812
		2L	148	180	209	226	264	314	361	427	527	619	704
		2.3L	135	164	191	206	240	287	330	390	482	565	642
PC AS	16	3L	114	138	160	173	202	241	278	329	406	476	542
		3.5L	103	125	145	157	183	218	251	297	367	431	491
		1L	121	149	176	191	227	276	323	389	493	588	677
		1.6L	89	109	129	141	167	203	238	287	363	434	500
		2L	77	94	111	121	144	176	205	248	314	375	432
	20	2.3L	70	86	101	111	132	160	187	226	286	343	395
		3L	59	72	85	93	110	135	157	190	241	288	332
		3.5L	53	65	77	84	100	122	142	172	218	260	300
		1L	234	283	329	355	414	493	566	669	825	968	1.098
		1.6L	172	208	242	261	305	363	418	494	609	714	812
CNL	16	2L	148	180	209	226	264	314	361	427	527	619	704
		2.3L	135	164	191	206	240	287	330	390	482	565	642
		3L	114	138	160	173	202	241	278	329	406	476	542
	20	3.5L	103	125	145	157	183	218	251	297	367	431	491
		1L	112	138	162	177	210	255	298	359	454	543	624
		1.6L	82	101	119	130	154	188	219	265	335	400	461
		2.4L	64	78	92	101	120	146	170	206	261	311	359
		3.6L	48	59	70	76	90	110	129	156	197	236	272
		1L	216	261	303	327	382	455	522	617	760	891	1.013
HCNL	16	1.6L	159	192	223	241	281	335	385	455	561	658	747
		2.4L	123	149	173	187	219	261	300	355	438	514	584
		3.6L	93	113	131	142	166	198	227	269	332	390	444
	20	1.3L	85	105	124	135	160	194	227	274	346	413	476
		2L	65	80	95	103	122	149	174	210	266	318	366
		3L	50	61	72	79	93	114	133	161	203	243	279
20	4.5L	38	47	55	60	71	87	101	123	155	186	215	
	1.3L	164	199	231	249	291	346	397	470	579	678	770	
	2L	126	152	177	191	223	266	305	361	445	523	593	
20	3L	96	116	135	146	170	203	233	276	341	400	455	
	4.5L	73	89	103	112	130	156	179	212	261	306	350	

Slope: 0%

*Inlet pressure: 3 bar / 58 psi

*Minimum pressure at the last dripper in the lateral: 0.5 bar / 7 psi (PC and PC AS) - 1 bar / 14.5 psi (CNL) - 1.5 bar / 21.7 psi (HCNL)

It is recommended to design the installation with branch lengths less than 800 meters / 2,625 feet.
For longer branch lengths, please consult our AZIS hydraulic calculation program at www.azud.com



Logistics data

Sales format	Model	Thickness	Coil Length	Coils/Pallet	Coils/container 40'HC	Coils/truck 81m³
		mm	m			
In bulk	16	0,9	500	-	384	432
	16	1	500	-	384*	432
	16	1,1	400	-	384	432
	16	1,2	400	-	384	432
	20	1,1	250	-	384	432
	20	1,2	250	-	384	432
Palletized	16	0,9	425	24	360	408
	16	1	425	24	360	408
	16	1,1	375	24	360	408
	16	1,2	375	24	360	408
	20	1,1	250	24	360	408
	20	1,2	250	24	360	408

*Model 16 in CNL and HCNL versions, 1 mm thickness. Bulk loading capacity per 40' HC container: 360 coils.

Related products



5 YEARS WARRANTY

AENOR
ISO 9261

AZUD FIT PLUS



We recommend accessories approved by AZUD, see our range of accessories and COMPLEMENTS AZUD FIT PLUS