

D

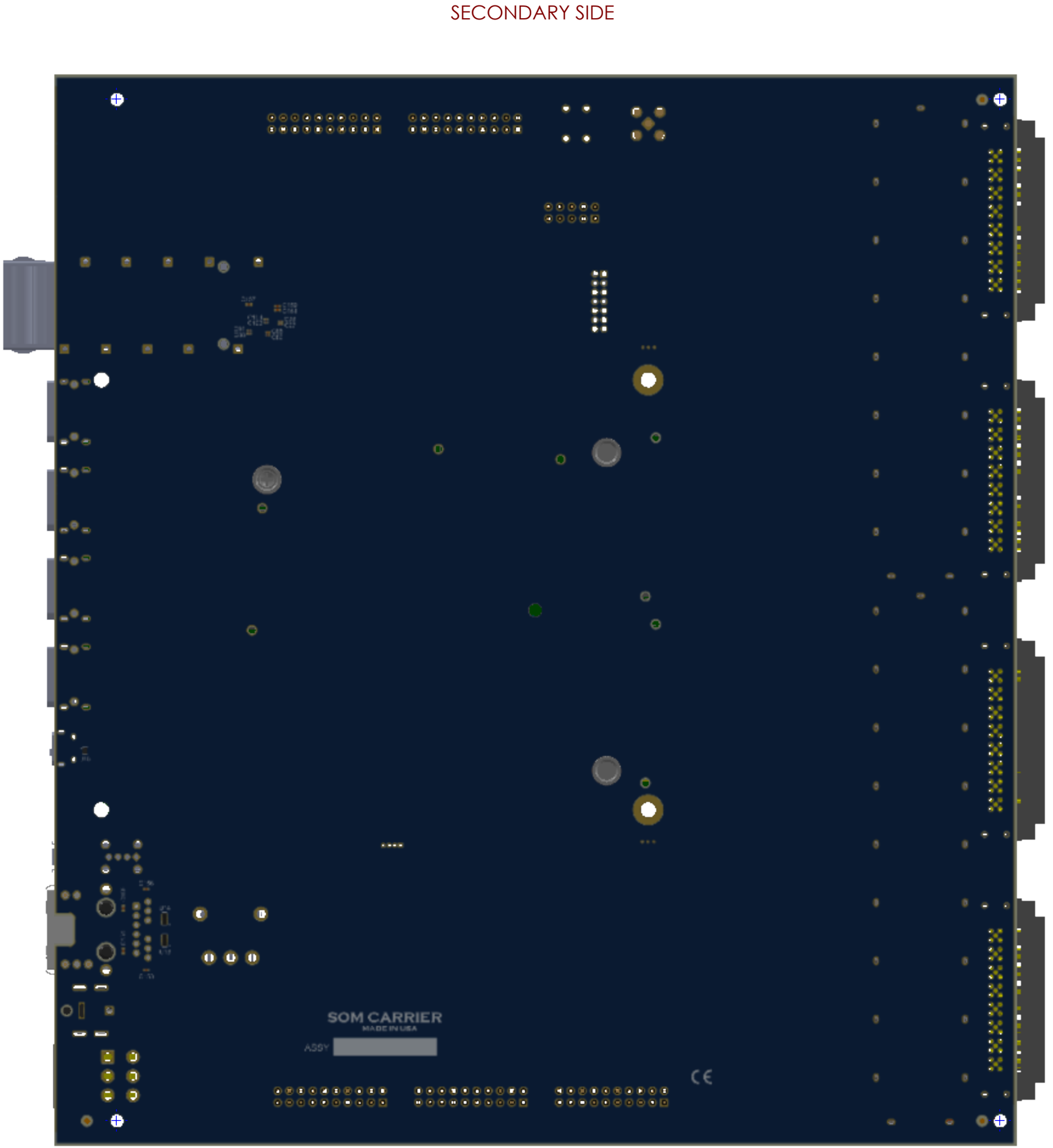
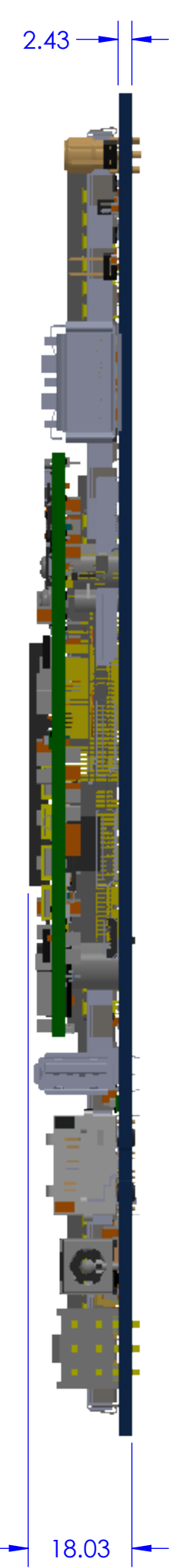
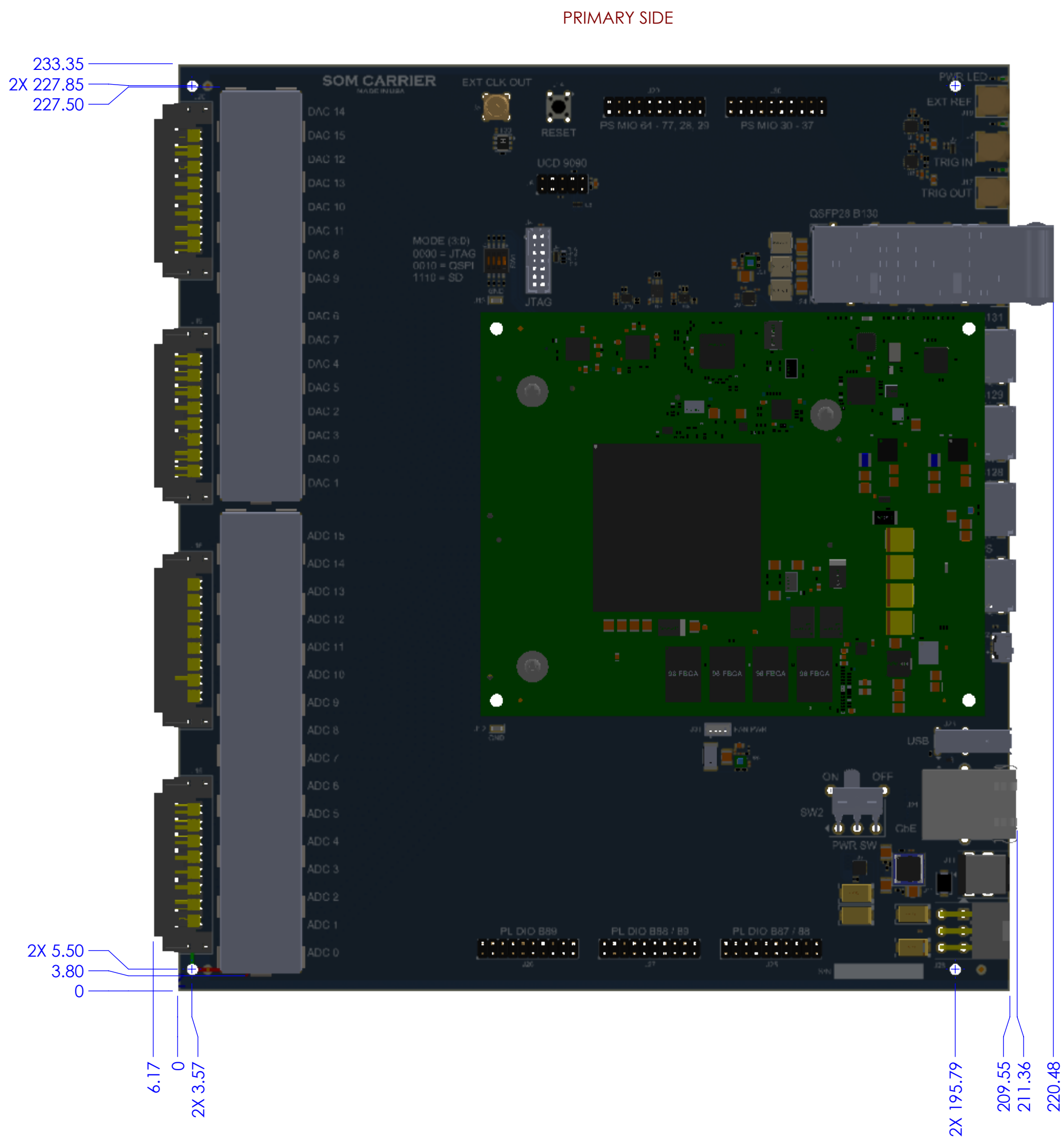
C

B

A

THIS DOCUMENT CONTAINS PROPRIETARY INFORMATION OF ELK ENGINEERING. IT MAY NOT BE COPIED, USED OR DISCLOSED FOR ANY PURPOSE WITHOUT THE EXPRESS WRITTEN CONSENT OF ELK ENGINEERING. ALL RIGHTS RESERVED.

NOTES: UNLESS OTHERWISE SPECIFIED



Wednesday, April 1, 2020 10:27:00 PM

C

B


ST 1

DWG NO.

A

REVISIONS				
REV	ECN	DESCRIPTION	DATE	APPROVED
A				

ALL SHEETS ARE THE SAME REVISION STATUS

UNLESS OTHERWISE SPECIFIED DIMENSIONS ARE IN MILLIMETERS TOLERANCES ON  .XX ± .25 .XXX ± .127  MATERIAL:          FINISH:	CONTRACT NO.			<b>ELK ENGINEERING</b>  12708 Misty Grove Street Moorpark, CA 93021 805.405.2609		
	APPROVED					DATE
	PREP	ELK ENGINEERING				
	LEAD	ELK				2004001
	ENGR		TITLE  <b>SOM CARRIER PACKAGE DIMENSION PC BOARD</b>			
	ENGR 1					
	ENGR 2					
	ENGR 3					
	RELEASE APPROVAL		SIZE <b>D</b>	CAGE CODE	DWG NO	REV <b>A</b>
			SCALE		SHEET 1 OF 1	



ELK ENGINEERING  
12708 Misty Grove Street  
Moorpark, CA 93021 805.405.2609