

THIS DOCUMENT CONTAINS PROPRIETARY INFORMATION OF ELK ENGINEERING. IT MAY NOT BE COPIED, USED OR DISCLOSED FOR ANY PURPOSE WITHOUT THE EXPRESS WRITTEN CONSENT OF ELK ENGINEERING. ALL RIGHTS RESERVED.

**NOTES: UNLESS OTHERWISE SPECIFIED**

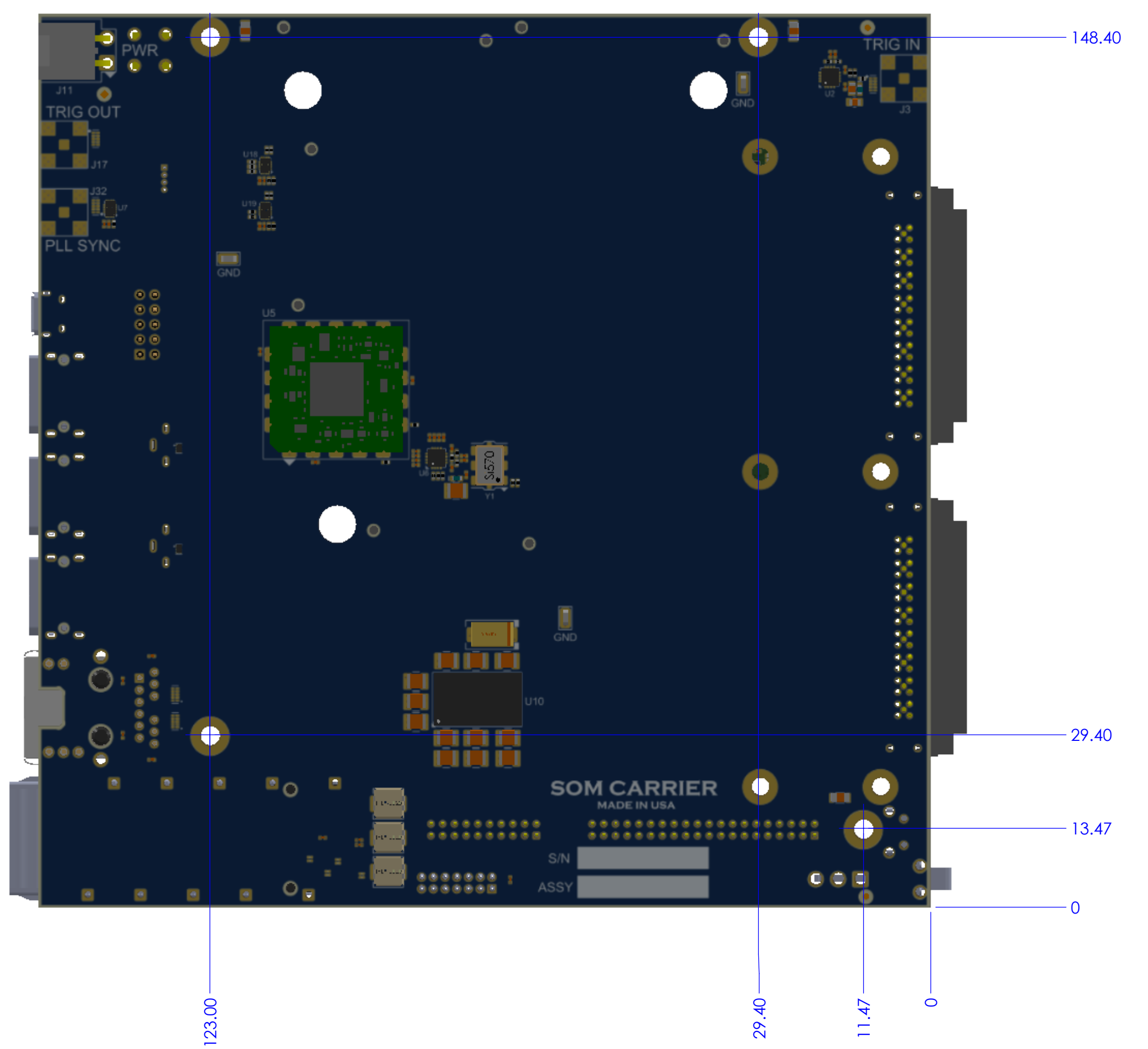
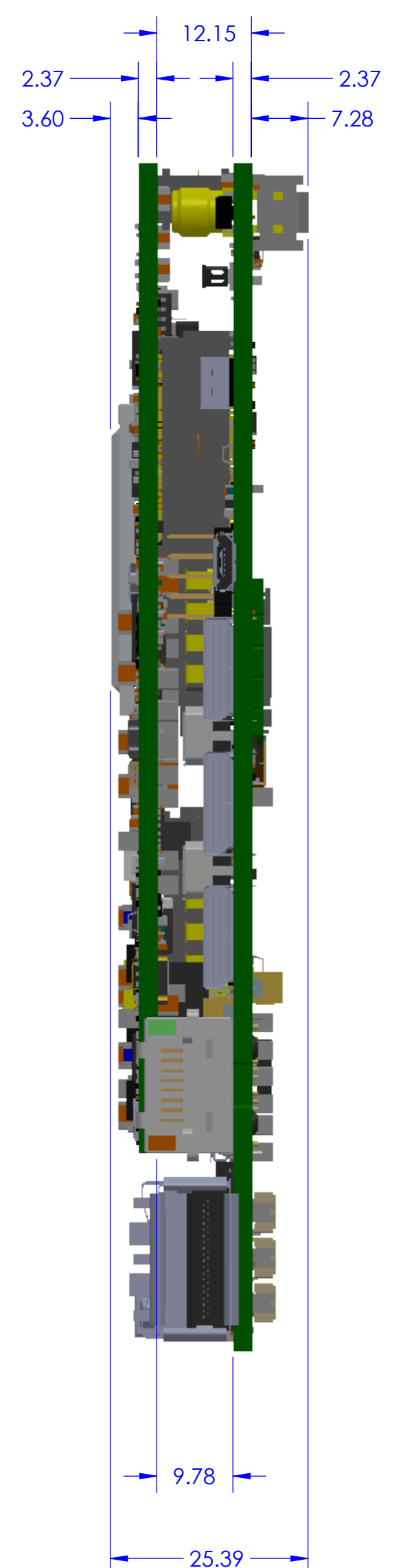
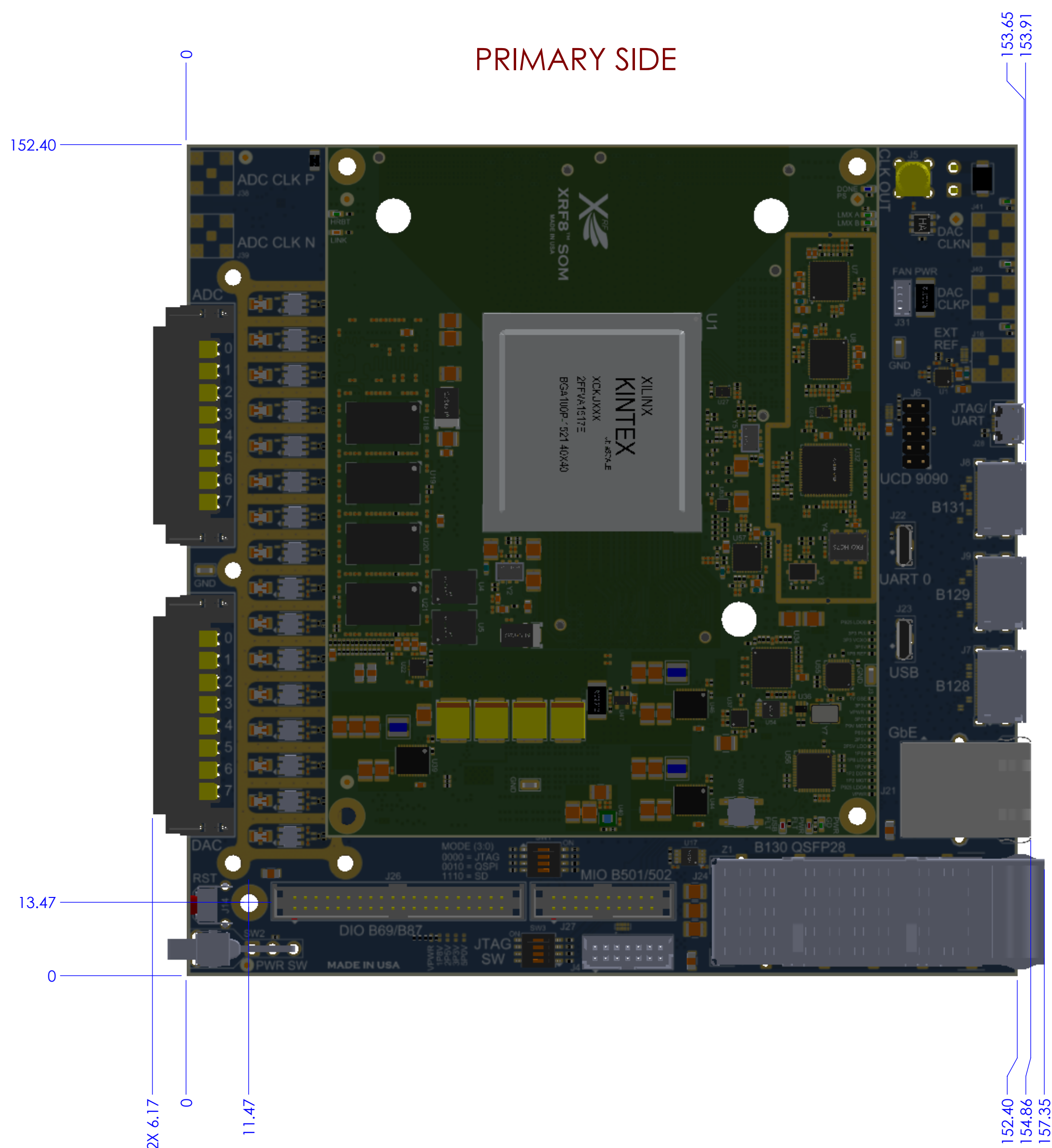
REVISIONS				
REV	ECN	DESCRIPTION	DATE	APPROVED
A				

D  
C  
B  
A

D  
C  
B  
A

PRIMARY SIDE

SECONDARY SIDE



ALL SHEETS ARE THE SAME REVISION STATUS

UNLESS OTHERWISE SPECIFIED DIMENSIONS ARE IN MILLIMETERS TOLERANCES ON .XX ± .25 .XXX ± .127	CONTRACT NO.		<b>ELK ENGINEERING</b> 12708 Misty Grove Street Moorpark, CA 93021 805.405.2609
	APPROVED	DATE	
MATERIAL:	PREP	ELK ENGINEERING	TITLE
	LEAD	ELK	<b>SOM CARRIER DAC 8 PACKAGE DIMENSION PCB ASSY</b>
	ENGR	ELK	
	ENGR	ELK	
	ENGR 1		
ENGR 2			
FINISH:	ENGR 3		SIZE
	RELEASE APPROVAL		CAGE CODE
			DWG NO
			REV
		SCALE 1.5:1	A
			SHEET 1 OF 1

**ATTENTION**  
ELECTROSTATIC SENSITIVE DEVICES

Sunday, September 12, 2021 4:47:36 PM

ST 1

DWG NO.

A

8 7 6 5 4 3 2 1