

Washing

(Only Washing, drying level can be selected.)



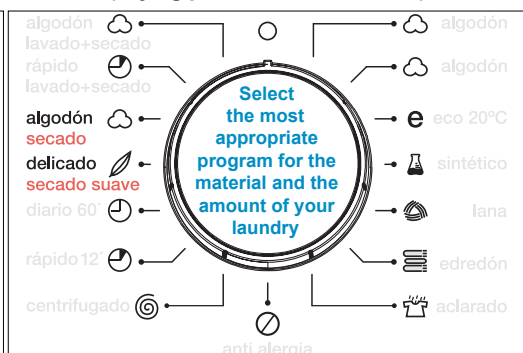
Washing + drying

(Ongoing drying process after washing process)

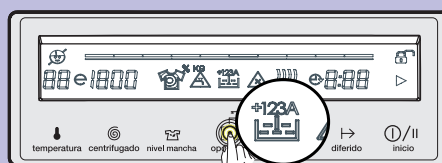
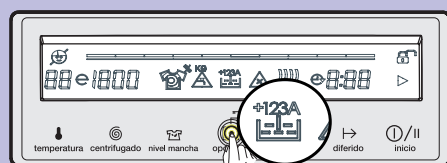


Drying

(Drying process of wet clothes)



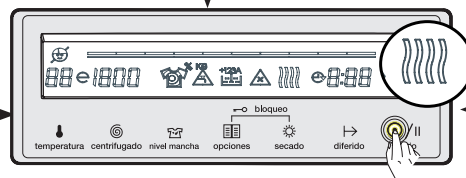
You can choose to add an additional function to your wash program, if available.




Select the most appropriate level of drying for your clothes dryer.



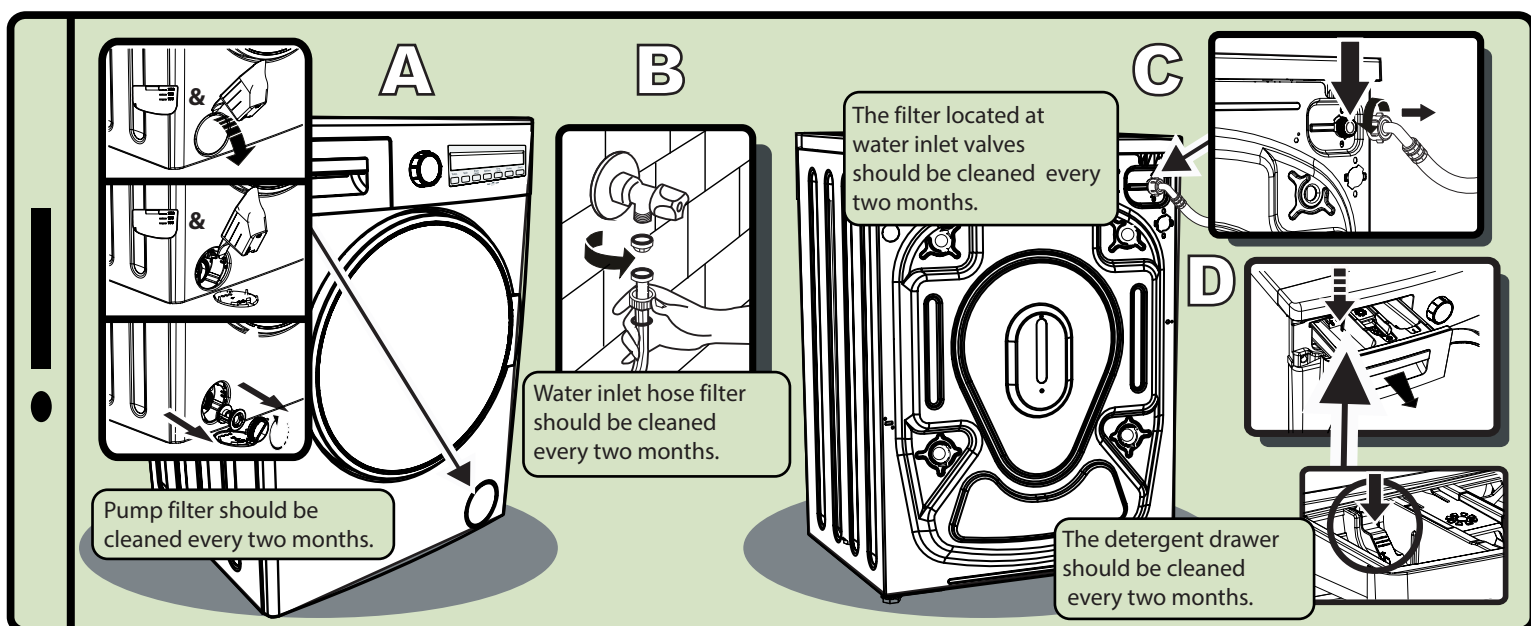
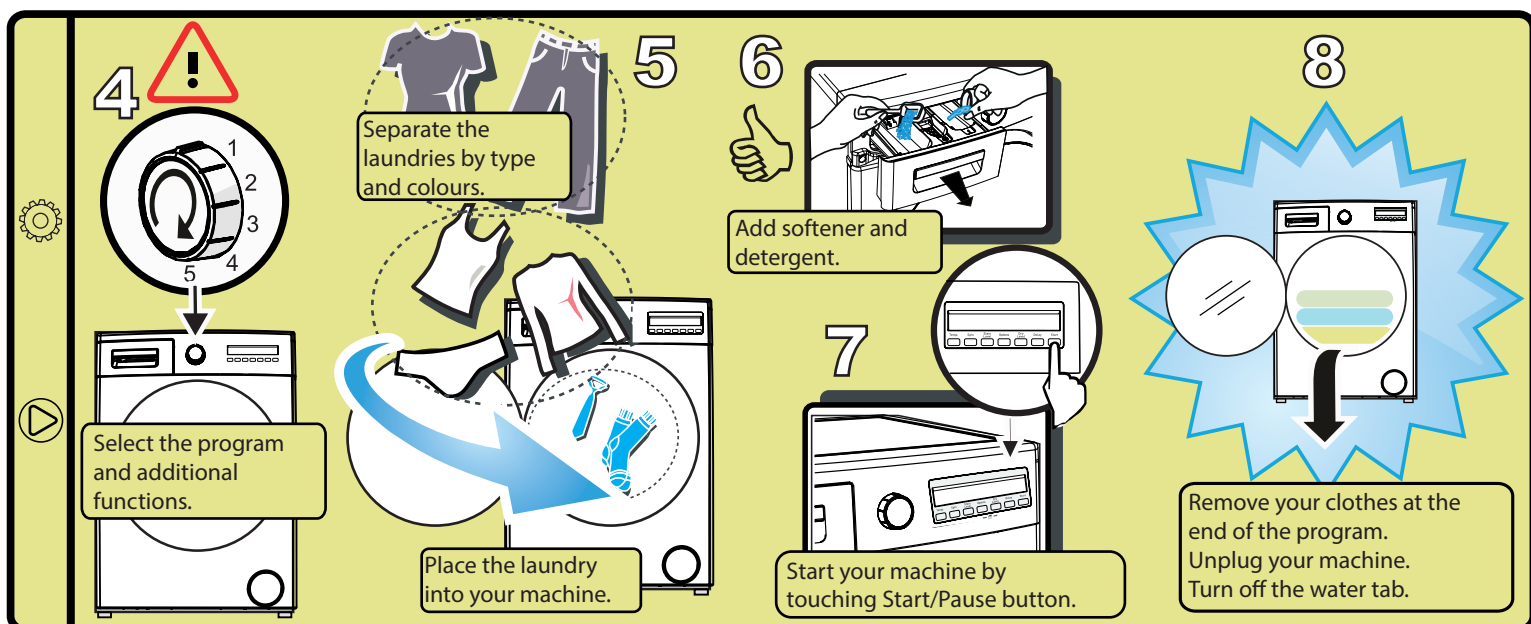
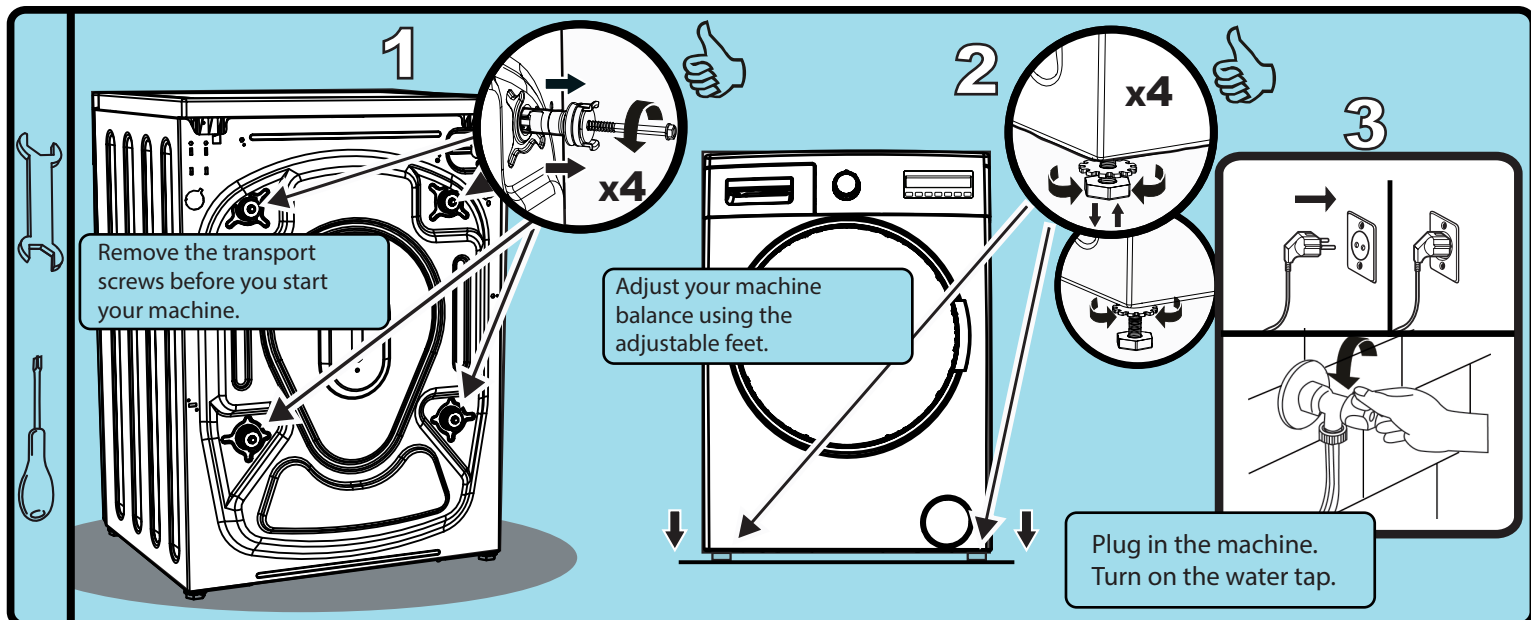
You can start the chosen program by pressing the start/pause button.



IMPORTANT ISSUES FOR DRYING PROCESS

- Only the “machine dryable” labeled () clothes can be dried in your machine.
- Do not dry your woolen, silk and sensitive clothes in your machine.
- You must select a programme before loading your laundry into the machine. If you load laundry into the machine without selecting a programme, the load sensor will not be activated.
- If you continue to operate your washing machine whilst overloaded, washing and drying performances will be affected. Additionally, your washing machine can be damaged and you may see your clothes get yellow after drying programs.
- Dry your white and coloured clothes separately. It is recommended that, separate your coloured clothes, colour by colour.
- Select the most appropriate program for the material and the amount of your laundry before starting, drying, washing or washing/drying process.

QUICK INSTALLATION AND INSTRUCTION USER MANUAL



PLEASE CHECK INSTRUCTION MANUAL FOR DETAILED INFORMATION.