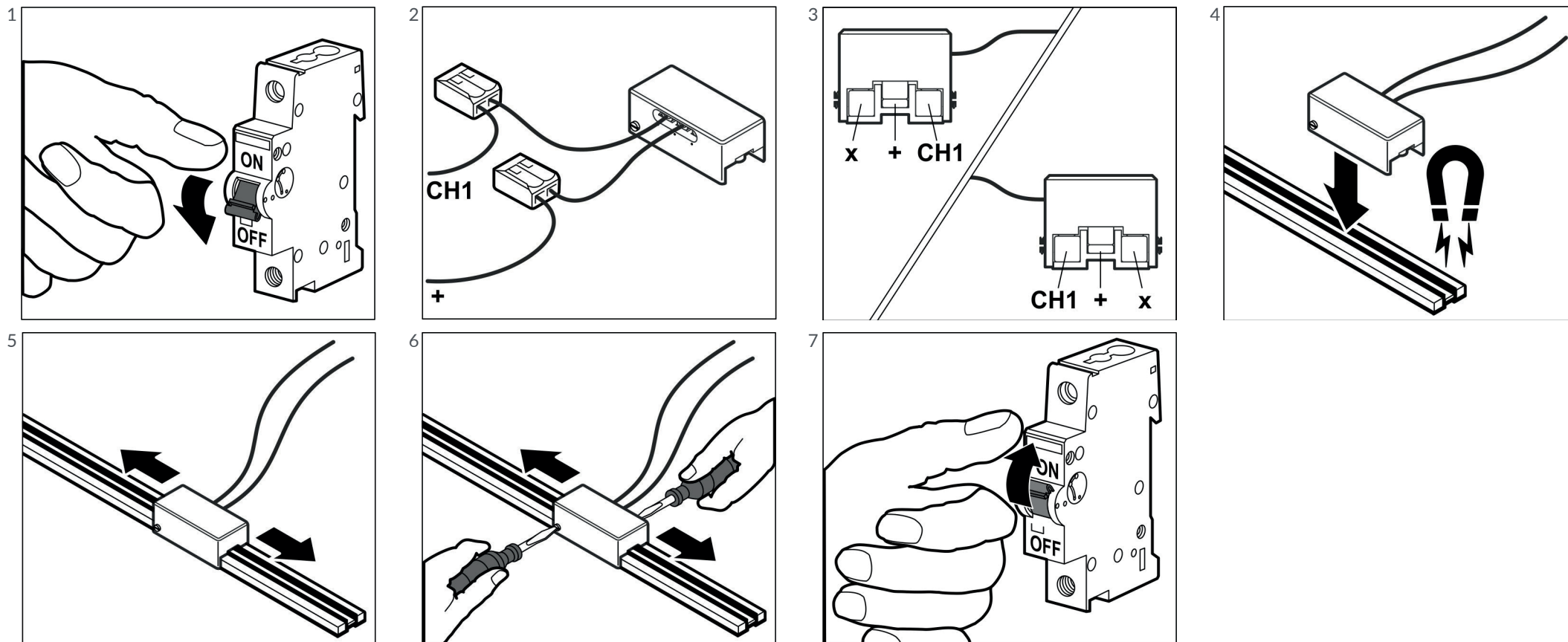


# VORSA DOT TRACK - 1 CHANNEL INSTALLATION GUIDE



GB - INSTRUCTIONS OF INSTALLATION AND USE**WARNING**

The product cannot be in any case modified or forced, any modifications might jeopardize the safety system making it dangerous.

John Cullen Lighting declines any responsibility on modified products.

Only Vorsa Dot Luminaires must be used.

Vorsa Dot Luminaires must not be used with other manufacturers' track systems.

Vorsa Dot Track Accessories are not compatible with class I track systems.

A SELV LED driver must be used.

Correct polarity must be observed.

Black cable (-) Negative

Red cable (+) Positive

The product must not be covered with insulating or similar materials.

Damaged cables must only be replaced by manufacturer.

If required, any additional wiring should follow the below specification:

CSA: 0.75mm<sup>2</sup>

Strip Length: 4 - 5mm

Max Cable Length: 2000mm

Installation may require advice from a qualified person.

Maximum weight: 480g per meter of track.

Please ensure mounting instructions are followed closely.

Maximum track temperature: 70°C

No inductive loads are to be used with this product.

Always check third party instructions.

Driver must be connected to internal luminaires with a maximum cable length of 2m, and to external luminaires with a maximum cable length of 5m.

It is the user's responsibility to ensure the electrical, mechanical and thermal compatibility between the track and any accessories or luminaires used.

Please follow wiring instructions closely and ensure the LED driver used offers protection against overloading and short-circuiting.

**CAUTION: TO REDUCE THE RISK OF OVERHEATING AND FIRE  
DO NOT BRIDGE CONDUCTORS.**

**CLEANING INSTRUCTIONS**

Use only a soft cloth to clean the appliance, dampened with water and soap or mild cleanser if needed for resistant dirt.

Warning: do not use alcohol or other solvents.