



## SPS HOME Off-line UPS 400 VA & 600 VA

### SPS HOME: Full protection for office and domestic units

The numerous types of electrical disturbances (e.g. mains failures, power cuts, blackouts, over-voltages,...) arising from the various causes (e.g. storms, lightning, excessive demand, natural disasters, accidents etc...) present problems to all electricity users, and a constant challenge to all computer users who depend on a correct and stable power supply to be able to work safely and efficiently. Electrical problems are responsible for the largest number of faults in computer systems, far more even than those caused by computer viruses. The best solution is therefore to seek protection with an Uninterruptible Power Supply.

The Salicru **SPS HOME** series Uninterruptible Power Supply, with Off-line technology, come in power ratings of 400 VA and 600 VA and are the best possible protection for both domestic and professional single-post computer environments.

Each UPS provides 6 output sockets with sufficient capacity for the central unit and all of the associated peripherals. In order to achieve greater total protection, telephone/ADSL protection is provided, preventing the entry of overvoltages and/or electrical noise through the telephone line. Completing the overall protection, the UPS units come complete with monitoring and file closing software to facilitate orderly shutdowns in the event of extended power cuts.

### Performance

- Off-line technology.
- Multiple base design with 6 schuko sockets.
- 4 sockets with UPS protection; all sockets with overvoltage protection.
- On/Off multifunction pushbutton.
- Self-detection of 50 or 60 Hz frequency.
- LEDs indicating mains, battery mode and battery failure.
- USB port for monitoring and file closing software.
- Telephone / ADSL line protection by RJ-45 port.
- Batteries user replaceable.
- Cold Start function.
- Enabling self test at startup.
- Anchoring for wall fixture.
- Automatic restart after each power cut and at the end of autonomy.
- Economic guarantee for connected units up to 70,000 €. <sup>(1)</sup>

(1) Only European Union countries.



SPS HOME



### Applications: Versatile protection for single-post environments

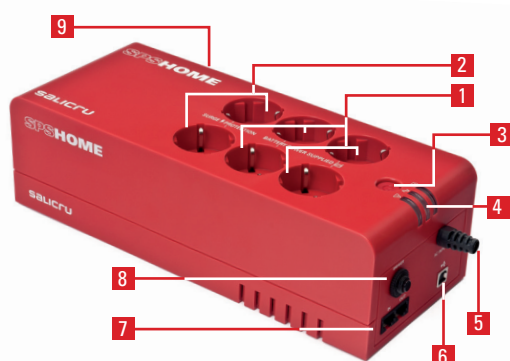
Designed in multiple base format, the **SPS HOME** series UPS have 6 schuko bases duly turned to enable trafo connections and with child protection by obturators, with a capacity in computer systems to protect both the PC and all of its associated peripherals (screen, printer, external hard disk, router, ...)

# SPS HOME

## Off-line UPS 400 VA & 600 VA

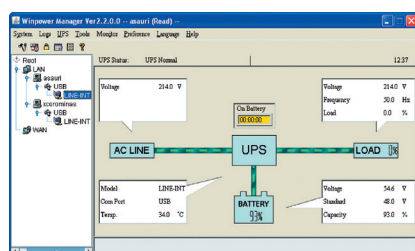


### Description



1. 4 x UPS sockets.
2. 2 x overvoltage protection sockets.
3. On / Off multifunction pushbutton.
4. LED indicators.
5. AC input.
6. USB port.
7. RJ-45 telephone / ADSL protection.
8. Protection breaker.
9. Anchoring for wall fixture.

### Software WinPower



- UPS monitoring and management software for closing files/applications.
- Supports Windows, Linux, Unix and Mac.



### Complete solution

- **SPS HOME** series UPS.
- UPS / PC USB connection wire.
- Quick start guide.
- Warranty certificate.
- Economic guarantee.

### Salicru warranty

- On-line registry at [www.salicru.com](http://www.salicru.com).
- 2-year warranty.
- Replacement of defective product at user's Office/Home.<sup>(1)</sup>
- Batteries covered by the warranty.

(1) Consult countries with this service



### TECHNICAL SPECIFICATIONS

MODEL	SPS HOME	
TECHNOLOGY	Off-line	
INPUT	Nominal voltage	230 V
	Voltage range	Up to 170V – 265V
	Nominal frequency	50 or 60 Hz
	Frequency range	±10%
	Frequency self-detection	Yes
OUTPUT	Voltage	230 V
	Voltage precision <sup>(1)</sup>	±10%
	Frequency <sup>(1)</sup>	50 or 60 Hz
	Frequency precision <sup>(1)</sup>	±1%
	Wave form <sup>(1)</sup>	Pseudo sinusoidal
	Socket type	Schuko
	No. sockets with autonomy + protection	4
	No. sockets with protection	2
	Transfer time	2/6 ms
PROTECTION	Input	Breaker, user-resettable
	Overload	AC mode and battery mode
	Short-circuit	Immediate interruption
	Protection against peaks	480 joules, 2 ms
	Data line	Tel / Fax, modem, ADSL internet + Ethernet 10/100 Mb
BATTERY	Type	Sealed, lead-calcium, free-maintenance, useful life 3-5 years
	Recharging time	8 hours
	Autonomy	Up to 20 minutes
	Replacement	By the user
	Protection	Against deep discharge
		Fuse against short-circuit
FUNCTIONS	Cold start	Yes
	Autotest	At each starter
	Automatic restart	Yes
INDICATIONS	Mains present	Green LED
	Battery mode	Yellow LED
	Battery failure	Red LED
ALARMS	Battery mode output	Audible alarm every 5 seconds
	Low battery (end of autonomy)	Audible alarm every second
	Inverter failure	Permanent alarm
COMMUNICATION	Port	USB
	Software	Monitoring and management for the Windows, Linux, Unix and Mac
GENERALS	Maximum altitude	3,500 m.a.s.l.
	Relative humidity	Up to 95% without condensing
	Temperature	0°C ÷ +40°C
	Acoustic noise @ 1 metre	<40 dB
STANDARDS	Safety	EN-62040-1-1; EN-60950-1
	Electromagnetic compatibility (EMC)	EN-62040-2
	Quality and Environmental Management	ISO 9001 and ISO 14001

(1) Battery mode.

### RANGE

MODEL	UPS POWER (VA / W)	TOTAL POWER (VA / W)	DIMENSIONS (D x W x H mm.)	WEIGHT (Kg)
SPS.400.HOME	400 / 200	1,150 / 1,150	295 x 120 x 85	3.2
SPS.600.HOME	600 / 300	1,150 / 1,150	295 x 120 x 85	3.5

Data liable to changes without prior notice.