

# SPS ADVANCE R2

Onduleur Line-interactive sinusoïdal rack 1U de 750 VA à 1500 VA

## SPS ADVANCE R2: High-density security in 1U rack format

Salicru's **SPS ADVANCE R** line embodies an innovative generation of Uninterruptible Power Supply Systems (UPS) based on Line-interactive technology, which incorporates sophisticated AVR stabilisation with Buck&Boost regulation and a pure sine wave output, engineered to guarantee uninterruptible and reliable power supply to a wide range of critical workloads.

This advanced technology ensures high efficiency, while providing significant savings in overall rack power consumption and is fully compatible with modern APFC (Active Power Factor Correction) power supplies, further optimising performance.

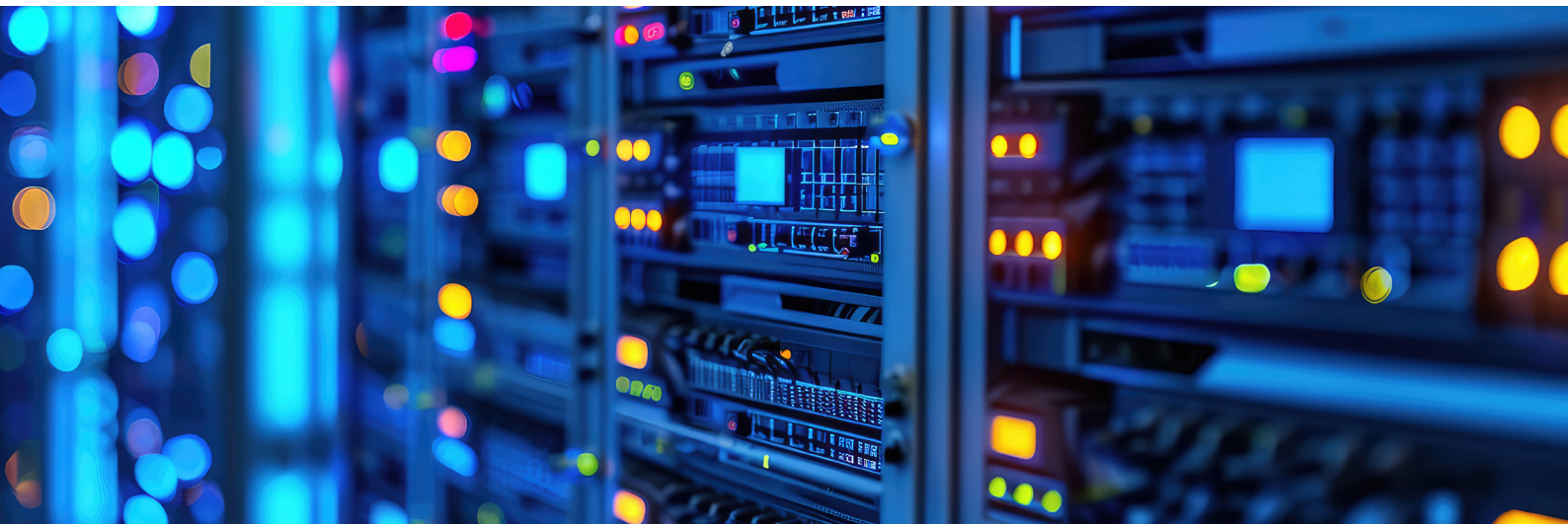
Communication capabilities include RS-232 interface, standard USB HID interface along with management and monitoring software that is compatible with Windows, Linux and Mac operating systems. Alternatively, additional adapters (such as the SNMP/Web adapter) can be fitted into the smart slot provided with the unit.

The **SPS ADVANCE R** series is available in 750, 1,000 and 1,500 VA power ratings, all in 19" rack format and with a height of 1U. The 750 VA model has a depth of 216 mm, while the 1,000 and 1,500 VA models have a depth of 485 mm, ensuring perfect integration into any rack environment.



## Applications: Top performance in a compact design

Purpose-designed for rack environments with high occupancy density, Salicru's **SPS ADVANCE R** series UPSs/UPSs free up space for other devices thanks to their height of just one U. This frees up valuable rack space for other devices, while at the same time facilitating the connection of all components via IEC-type electrical sockets, thus optimising the management of complex IT environments.



**salicru**  
**SMART**  
SOLUTIONS

**salicru**

## Performances

- Line-interactive technology with AVR stabilisation (buck-boost).
- Pure sine wave.
- Ultra-compact 1U rack format.
- Efficiency of up to 98%.
- Compatible with APFC power supplies.
- LCD display + keys for operation and information.
- Smart slot for SNMP/potential-free contacts/Modbus.
- RS-232 and USB-HID communication interface.
- 2 programmable outputs.
- Monitoring and management software for Windows, Linux and Mac.
- IEC output sockets.
- Automatic battery test on each start-up.
- Cold-start function for start-up from batteries.
- SLC Greenergy solution.



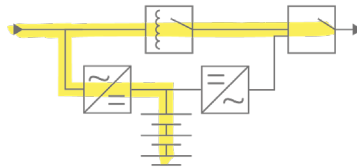
## Software

UPS monitoring and management software for closing files and applications. Compatible with Windows, Linux and Mac.



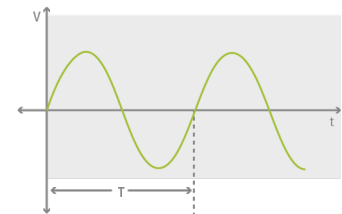
## Line-interactive technology

Ideal for office environments. It combines Off-line technology with an internal voltage stabiliser for better compensation of the voltage fluctuations and to avoid a greater use of the batteries and so prolong their life time.



## Sine-wave output voltage

This UPS system offers clean, high-quality output voltage with a pure sine wave. This feature is particularly suitable for use with sensitive loads and guarantees optimum operation for the devices connected.



# Range

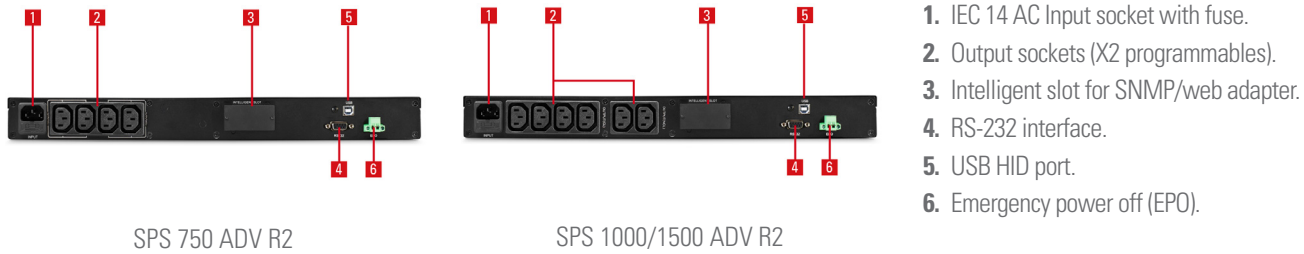
MODEL	CODE	POWER (VA / W)	NO. OF OUTPUT SOCKETS	DIMENSIONS (D × W × H mm)	WEIGHT (Kg)
SPS 750 ADV R2	6A0DA000004	750 / 450	4 x IEC C13	230 × 433 × 44	8.6
SPS 1000 ADV R2	6A0DA000005	1000 / 600	6 x IEC C13	390 × 433 × 44	14.2
SPS 1500 ADV R2	6A0DA000006	1500 / 900	6 x IEC C13	390 × 433 × 44	15.8

It's recommended to keep a front distance of 35mm, parallel to the fixing plane of the ears on the rack cabinet. This distance is not included in the "Depth" total dimension.

# Dimensions



# Connections



## Technical specifications

MODEL		SPS ADVANCE R2
TECHNOLOGY		Line-interactive
FORMAT		Rack 1U
INPUT	Rated voltage	220 - 240 V
	Voltage range 100% load	165 ÷ 290 V
	Stabiliser	AVR (Buck & Boost)
	Rated frequency	50 / 60 Hz (auto-detection)
	Frequency range	±5 Hz
	Protection	Fuse
OUTPUT	Rated voltage	230 V
	Voltage accuracy (battery mode)	±10%
	Total harmonic distortion (THDv)	<5% linear load / <10% non-linear load
	Waveform (battery mode)	Pure sinusoidal
	Frequency	50 / 60 Hz ±1 HZ
	Frequency accuracy (battery mode)	±1 Hz
	Compatibility with APFC loads	Yes <sup>(1)</sup>
	Performance Stabiliser mode (AVR)	>95%
	Performance Battery mode	>75%
	Admissible overloads in battery mode	110% for 1 min / 130% immediate
	Admissible overloads in-line mode	110% for 1 min / 130% immediate
	Socket type	IEC C13
BATTERY	Battery type	Pb-Ca sealed, AGM, maintenance-free
	Charge type	I/U (constant current/constant voltage)
	Recharge time	4 hours to 90%
	User replaceable battery	Yes
	Battery test	Automatic on each start-up + manual
COMMUNICATION	Ports	RS-232 / DB9 + USB (HID)
	Intelligent slot	Slot for SNMP/potential-free contacts/ MODBUS
	Monitoring software	For Windows, Linux and Mac
INDICATIONS	Type	LCD + keypad
	Values	Input and output voltage / % load / % battery / backup
	Levels	Connected load / overload / battery / low battery
	Alarm	Battery / low battery / overload / failure
OTHER FUNCTIONS	Cold start (start-up from batteries)	Yes
	Emergency stop (EPO)	Yes
GENERAL	Operating temperature	0° C ÷ 40° C
	Relative humidity	Up to 95%, non-condensing
	Maxium operating altitude	2,400 masl
	Acoustic noise at 1 metre	<40 dB
STANDARDS	Safety	EN-IEC 62040-1
	Electromagnetic compatibility (EMC)	EN 62040-2(C2)
	Operation	EN 62040-3
	Corporate cerification	ISO 9001, ISO 14001, ISO 45001

(1) Power degradation of 20%

Information subject to change without notice.

