



SLC ELITE / SLC ELITE MAX

UNINTERRUPTIBLE POWER SUPPLY SYSTEMS FROM 60 TO 300 kVA

▶ SLC ELITE / SLC ELITE MAX: New solutions in high performance protection

The **SLC ELITE** and **SLC ELITE MAX** series On-line double conversion with THF (Transformerless High Frequency) technology, in a power range between 60 and 300 kVAs, are at the top of the **SALICRU** UPS range and are a further step in protecting and supplying high output three-phase power supply.

The premises in designing these series were to have an end product that gathered the maximum performance with regard to flexibility, operability, reliability and the lowest possible operating cost, amply achieved thanks to its characteristics of modularity, parallel capacity, tolerance to failure, high output, easy operation and adaptability to the different working environments. All of this makes them the ideal protection system for computer environments, telecommunications and critical process systems and infrastructures.

▶ PERFORMANCES

- ▶ On-line double conversion with PLD control.
- ▶ Walk-in or soft start rectifier.
- ▶ Input power factor > 0.95.
- ▶ Growth in parallel up to 8 units (standard parallel kit).
- ▶ Ring topology in redundant configurations.
- ▶ THF technology inverter in all models.
- ▶ Batt-Watch control of the batteries for fast charging, surveillance and extreme care.
- ▶ AGM batteries with a life span of 10 years, standard.
- ▶ Static and maintenance bypass in all equipment, standard.
- ▶ User interface by alphanumerical display programmable in several languages.
- ▶ Fluid-Cooling heat dissipation system. ⁽¹⁾
- ▶ Operation selectable inverter / EcoMode.
- ▶ THDi < 5%, with harmonicless.
- ▶ The best ratio between power/occupied surface.
- ▶ FP admissible up to 0.8 both with inductive and capacitive loads.



▶ SLC ELITE model



▶ SLC ELITE MAX model

▶ APPLICATIONS: Ideal for all environments

Data centre: Data are currently the most powerful value in business, making the hourly cost of network downtime astronomical – applications servers, communication servers, data storage bases, active network elements, etc.–.

Telecommunications: The telecommunications era brings forth the need to avoid failures in supply that could cut off the communication between subscribers – internet centres, land line telephony infrastructure, mobile switching centre, radio/television broadcasters, etc.–.

Industrial processes: Electrically complicated environments, contaminated environments and special mechanical requirements are some of the industrial work scenarios where the purpose is to supply safe energy in difficult environments – continuous critical processes, monitoring, instrumentation, security systems, etc.–.

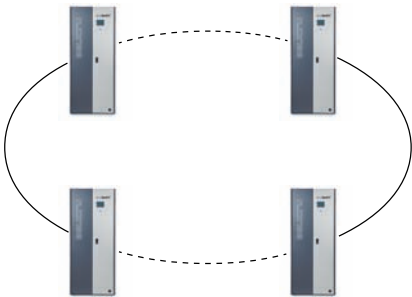
(1) SLC ELITE MAX models



SLC ELITE SLC ELITE MAX

► PARALLEL architecture

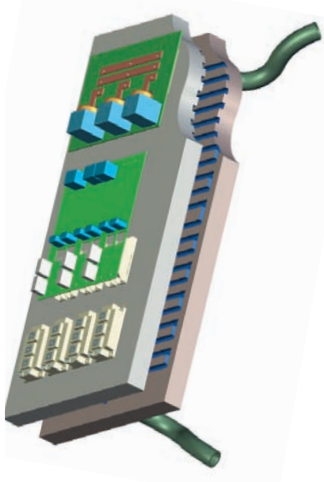
To reply to larger requests for availability and the need for growth and evolution in the installations, the **SLC ELITE** and **SLC ELITE MAX** series allow for the parallel operation of up to 8 units.



► Ring topology

► FLUID-COOLING

► Innovative heat dissipation system consisting of circulating high output transport fluid.



► Fluid-Cooling system

► COMMUNICATIONS

- RS-232, AS-400 and relay interfaces standard.
- Monitoring and file closing software.⁽¹⁾
- Remote control.⁽¹⁾
- SNMP adapter.⁽¹⁾
- SICRES telemanagement software.⁽¹⁾
- MODBUS protocol.⁽¹⁾
- RS-485 protocol.⁽¹⁾
- 2nd RS-232 port.⁽¹⁾

► TOTAL availability

- Harmonicless solutions.⁽¹⁾
- Extended autonomies.⁽¹⁾
- External manual bypass.⁽¹⁾
- Galvanic isolation in the bypass line.⁽¹⁾
- Non-standard frequencies and voltages.⁽¹⁾
- Independent bypass and rectifier inputs.⁽¹⁾

(1) Option



UNINTERRUPTIBLE POWER SUPPLY SYSTEMS FROM 60 TO 300 KVA

► TECHNICAL SPECIFICATIONS

MODEL		SLC ELITE	SLC ELITE MAX	
TECHNOLOGY		On-line, double conversion, PLD control		
INPUT	Voltage	3 x 380 / 400 / 415 V		
	Voltage range	3 x 330 ÷ 480 V	3 x 320 ÷ 480 V	
	Frequency range	40 ÷ 70 Hz		
	Rectifier	Walk-in type		
	Total harmonic distortion (THDi)	< 5% ⁽²⁾		
	Power factor	> 0.99 ⁽²⁾	> 0.96	
OUTPUT	Voltage	3 x 380 / 400 / 415 V		
	Accuracy	Steady state	± 1%	
		Dynamic state with load steps	± 4% 50%	± 5% 100%
	Frequency	Synchronised	Selectable ± 1%, ± 2%, ± 5% and ± 10%	
		Free running	± 0.005%	± 0.0001%
	Maximum slew rate	± 1 Hz / s		
	Efficiency	> 92%	> 95%	
	Total harmonic distortion (THDv)	< 2%		
	Dynamic response time	50 ms		
	Permissible overload	125%	10 minutes	
		150%	5 seconds	Immediate
STATIC BYPASS	Type and activation criteria	Solid state, PLD control		
	Transfer time	Nil		
	Voltage	3 x 380 / 400 / 415 V		
	Frequency	50 / 60 Hz		
	Re-transference	Automatic after alarm disappearance		
	Permissible overload	1000% for 100 ms		
	Transfer to Bypass	Immediate for overloads higher than 150%		
MANUAL BYPASS	Transfer type	Manual		
	Voltage	3 x 380 / 400 / 415 V		
	Frequency	50 / 60 Hz		
BATTERIES	Type	Pb-Ca, maintenance free, gas recombination		
	Recharge time	From end of autonomy till 80% of the capacity, 4 hours		
	Protection	Against overvoltage, undervoltage and alternating current		
	Charge voltage control	Batt-Watch		
GENERALS	Operating temperature	0° C ÷ + 40° C		
	Relative humidity	Up to 95%, non-condensing		
	Maximum operating altitude	2400 m.a.s.l.		
STANDARDS	Safety	EN-62040-1-2 / EN-60950-1		
	Electromagnetic Compatibility (EMC)	EN-62040-2		
	Operating	VFI según EN-62040-3		
	Marking	CE		
	Quality and Environmental management	ISO 9001 and ISO 14001 TÜV		

(2) Harmonicless solution

Data liable to changes without prior notice.

► SLC ELITE RANGE

MODEL	POWER (kVA / kW)	Nr. UPS + BAT CABINETS	UPS DIMENSIONS (D x W x H mm)	WEIGHT (Kg) ⁽³⁾	BAT DIMENSIONS (D x W x H mm)	WEIGHT (Kg) ⁽³⁾
SLC-60-EL	60 / 48	1 + 1	730 x 710 x 1800	295	830 x 790 x 1800	547
SLC-80-EL	80 / 64	1 + 1	730 x 710 x 1800	330	830 x 790 x 1800	726
SLC-100-EL	100 / 80	1 + 1	730 x 710 x 1800	370	830 x 790 x 1800	726
SLC-120-EL	120 / 100	1 + 1	730 x 710 x 1800	450	830 x 790 x 1800	870

► SLC ELITE MAX RANGE

MODEL	POWER (kVA / kW)	Nr. UPS + BAT CABINETS	UPS DIMENSIONS (D x W x H mm)	WEIGHT (Kg) ⁽³⁾	BAT DIMENSIONS (D x W x H mm)	WEIGHT (Kg) ⁽³⁾
SLC-160-ELM	160 / 128	1 + 1	800 x 1240 x 1800	570	830 x 790 x 1800	1190
SLC-200-ELM	200 / 160	1 + 1	800 x 1240 x 1800	600	830 x 1400 x 1800	1640
SLC-250-ELM	250 / 200	1 + 1	800 x 1240 x 1800	630	830 x 1400 x 1800	1640
SLC-300-ELM	300 / 240	1 + 1	800 x 1240 x 1800	630	830 x 1400 x 1800	1776

(3) Estimated autonomy between 4 and 8 minutes, with 3 x 400 V input / output voltages. For other configurations, dimensions and weights consult.

902 48 24 00*
+34 93 848 24 00**
WWW.SALICRU.COM

SALICRU

AVDA. DE LA SERRA 100 · 08460 PALAUTORDERA · SPAIN · FAX +34 93 848 11 51

REF. JM583A01 CODE 401AB000353

ED. JANUARY 2011

UNINTERRUPTIBLE POWER SUPPLY (UPS)

(*) Spain only (**) Rest of World