

ETHERNET/SNMP NETWORK CARDS

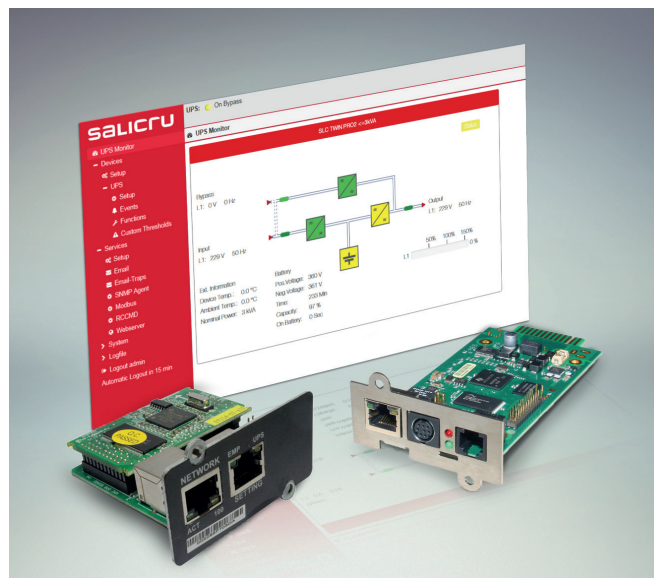
Ordered closure of servers

Ethernet/SNMP Network Cards: The best add-ons to protect your computer network

In case of any electrical problem - supply cut, peak voltage or line drop - the main function of an Uninterruptible Power Supply (UPS) is to protect the connected loads and continue supplying power to your computer network, either from the batteries or by voltage regulation.

It is very important to monitor the UPS to see whether it is working properly at all times, so that it can notify us of its correct operation and/or manage the complete and ordered closure of our computer network. This is why installation of an Ethernet Network card in the UPS is necessary, so that it can autonomously manage the different functions required by our computer network.

Salicru has a complete range of **Ethernet / SNMP network cards** with different functions, to meet our clients' requirements.



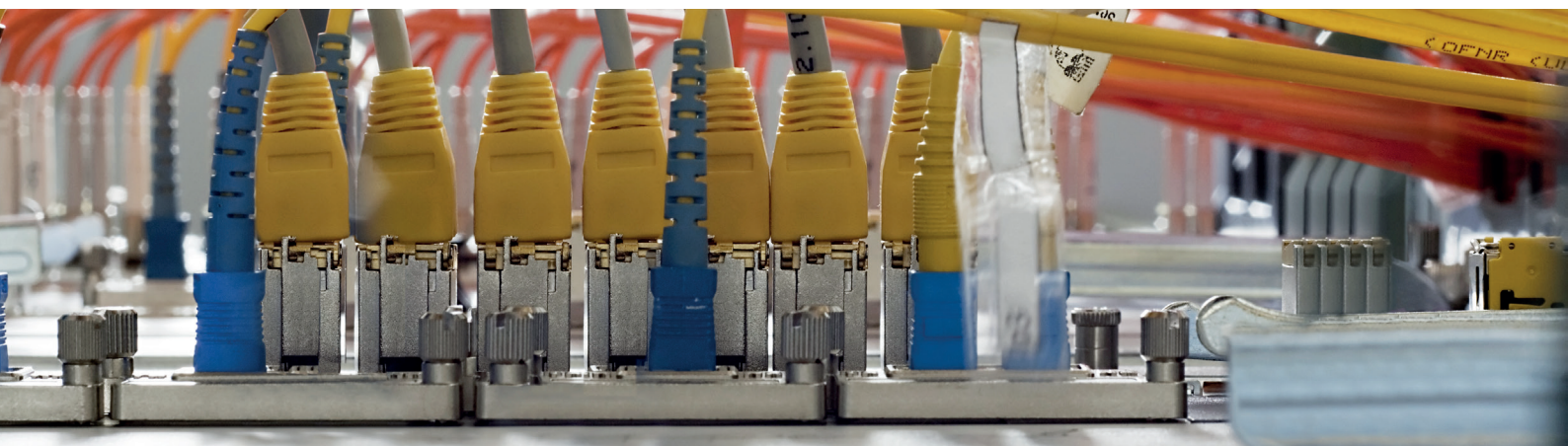
| Ethernet Adapter / SNMP WEB Adapter

The functions incorporated in these cards will be able to satisfy the most demanding requirements of IT administrators. They are quick to configure, which facilitates your work, have extensive options for monitoring and personalisation of events, complete off/on options (wake on lan) of our physical or virtual server farm, SNMP (v2, v3) and MODBUS gateway (tcp), use of SSL through digital certificates belonging to the client and BACnet protocol for building automation.

They also allow the connection and management of temperature / humidity probes, SMS sending via a GSM modem, and management of voltage-free contacts.

| “Basic” Ethernet Adapter / SNMP WEB Adapter

This low cost card allows basic local monitoring in the form of a table, automatic and non-customisable sending of e-mails and static event management. It is recommended for management using third-party software through **SNMP** (Nagios, Zabbix, Pandora, Prtg, OpenView, Tivoli, etc).



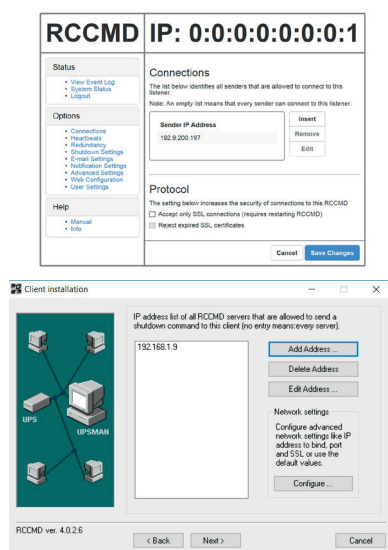
DESCRIPTION	ETHERNET ADAPTER / SNMP WEB ADAPTER	"BASIC" ETHERNET ADAPTER / SNMP WEB ADAPTER
Compatible with all series with SALICRU SLOTS	Yes	No
Easy configuration assistant	Yes	No
Data Viewing	Block graph	Table
Ordered Shutdown of Servers	Yes, through events, for most physical / virtual operating systems	Basic for Windows / Linux
Configuración SMTP	Configurable, enables encryption, port customisation	Standard
Sending of Alerts by E-Mail	Automatic and/or allows for customisation of alerts to be sent, and at what time	Automatic, non-customisable
Customisable events according to UPS values/measurements	Yes	No
SNMP compatibility	SNMP V2, and V3	SNMP V2
Historical Events and Measures	Customisable, viewing of text and graphs, allows export to Excel	Events and measures in a table
Modbus	TCP and RS232	No
BACnet protocol	Yes	No
Secure Access	Using login and password, configurable	No
Planning of scheduled actions	Yes	Yes
SMS Modem Option	Yes	No
Manageable Relay Option	Yes	No
Optional Temp/Humidity Probe	Yes	No

Information subject to change without notice.

RCCMD: Remote shutdown application

Software agent for most physical/virtual operating systems. The different actions (shutdown, message, action) are executed by customisable scripts, after receiving the order from the Ethernet Adapter / SNMP WEB Adapter. Compatible with most operating systems, including virtual systems (vmware, citrix and hyperv).

Software licensed by a physical server to be managed. Each adapter includes a license. For more servers, additional licenses must be purchased. It offers the SSL security option.



UNMS II: Unlimited Salicru's UPS management

Software for centralised monitoring of a large fleet of UPS installed in our company. The **UNMS II** is installed as a WEB service to facilitate monitoring and management. The **UNMS II** is a scalable software that has different licensing levels according to the equipment to be monitored, from the basic and free level, of 9 UPS devices, to installations of more than 2,500.

