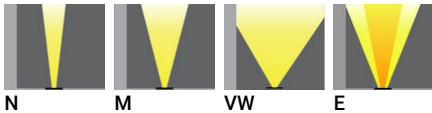


HARRIER 1 (HA-60037-S)**Product description**

Integral control gear - With recessing box - Round - Stainless steel frame

**Luminaire Structure**

- Die-cast aluminium housing
- Pre-treated before powder coating ensuring high corrosion resistance
- 6 mm thick front ring in grade 316 stainless steel or aluminium
- Single cable entry, through wiring upon request
- One cable gland supplied with 1 m of 3x1.0 sqmm outdoor cable
- Stainless steel fasteners in grade 316
- Durable silicone rubber gasket
- Clear toughened glass
- High-efficiency PMMA lens
- Integral control gear
- Recessing box in high-density polyethylene is included
- Suitable for walk-over with a maximum load of 200 kg

Optic**Product colour**

HARRIER 1 (HA-60037-S)

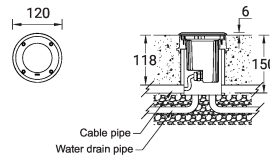
Technical information

Material	Stainless Steel
Light source	MR16-GU10
Power	8 W
Lumen	260 - 402 lm
Efficacy	35 - 54 lm/W
Driver option	Integral control gear
Driver	Constant current (CC)

Input voltage	220-240 V 50/60 Hz
Optic	N, M, VW, E
Optic value	13°, 22°, 58°, 12°x50°
CCT / CRI	3000K CRI95, 4000K CRI95
Bug	B0-U3-G0
ULR	100%
ULOR	100%

Dimming type	On/Off
Product colours	Stainless Steel
Weight	0.7 kg
Operating temperature	-20 °C to 50 °C
Cable	One cable gland supplied with 1 m of 3x1.0 sqmm outdoor cable
Through wiring	Single cable entry, through wiring upon request
Lens / Reflector / Optic	Clear toughened glass, High-efficiency PMMA lens

HA-60037-S



HARRIER 1 (HA-60037-S)**Accessory**



Connector IP68 3 Pin Power
A62591



Connector IP68 5 Pin Power +
Signal
A613191
