

PRAGUE 2 (PRA-10011-1MS)



Product description

200x80 mm - 500 mm - With integrated motion sensor
- 1 side



microPrim™



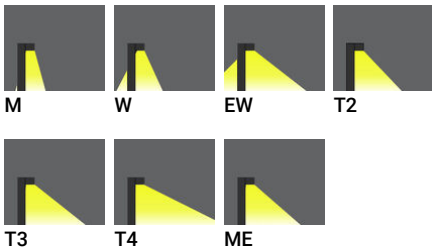
DARKSKY APPROVED
Reduces light pollution
Certified by DarkSky.org



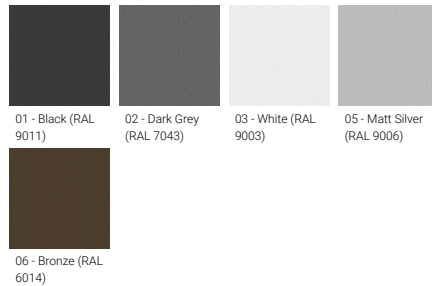
Luminaire Structure

- Die-cast aluminium housing and frame
- Extruded aluminium column
- Pre-treated before powder coating ensuring high corrosion resistance
- Single cable entry
- One IP68 connector supplied with 0.2 m of 3x1.0 sqmm outdoor cable
- Stainless steel fasteners in grade 304 with zinc flake coating (ZFC)
- Durable silicone rubber gasket
- Clear toughened glass
- High-efficiency PMMA lens
- Integral control gear

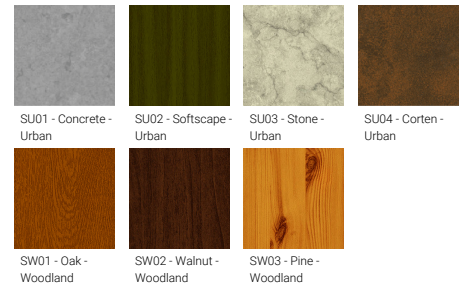
Optic



Product colour



Special finishes upon request



PRAGUE 2 (PRA-10011-1MS)

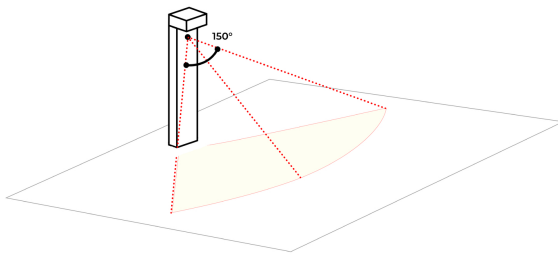
Technical information

Material	Aluminium
Light source	8 LED
Power	14 W
Lumen	1317 - 1594 lm
Efficacy	94 - 114 lm/W
Driver option	Integral control gear
Driver	Constant current (CC)
Input voltage	220-240 V 50/60 Hz
Optic	M, W, EW, T2, T3, T4, ME

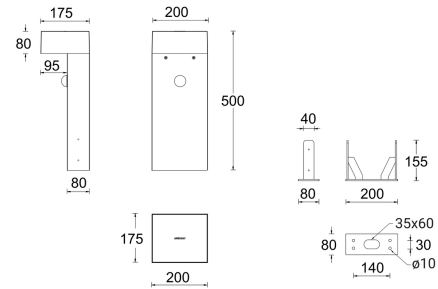
Optic value	30°x21°, 53°x31°, 114°x63°, 140°x31°, 143°x53°, 129°x45°, 144°x37°
CCT / CRI	2700K CRI80, 3000K CRI80, 4000K CRI80
Bug	B0-U2-G0, B0-U2-G1, B0-U3-G1, B1-U3-G1
ULR	2%, 3%, 7%, 8%, 9%, <1%
ULOR	2%, 3%, 7%, 8%, 9%, <1%
CIE flux code n°3	95, 96, 97, 98
Dimming type	1-10V Black, Dark Grey, White, Matt Silver, Bronze, Concrete - Urban, Softscape - Urban, Stone - Urban, Corten - Urban, Oak - Woodland, Walnut - Woodland, Pine - Woodland
Product colours	
Weight	5.7 kg

Operating temperature	-20 °C to 40 °C
Cable	One IP68 connector supplied with 0.2 m of 3x1.0 sqmm outdoor cable
Through wiring	Single cable entry
Lens / Reflector / Optic	Clear toughened glass, High-efficiency PMMA lens
MacAdam Ellipse	3 SDCM
Lifetime L90B10 (hours)	> 90,000
Lifetime L80B10 (hours)	> 90,000
Lifetime L80B50 (hours)	> 90,000
Variants (1-10V)	Compatible with EN/ IEC 60598-2-22: Suitable for emergency installations as central supply, non-maintained (Z0)

PRAGUE
Adjustable sensor (5 seconds – 30 minutes)
30° ~ 150° Sensitivity
Sensor detection area: 9 m



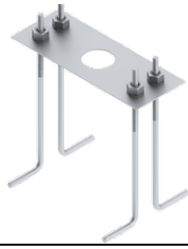
PRA-10011-1MS



PRAGUE 2 (PRA-10011-1MS)**Accessory**



Remote controller for the motion
sensor - 1-10V
A14291



Anchor bolt
A11191
