

NYBRO 4 (NYB-80357)



Product description

Down - 60x80 mm - 2330 mm - Trimless - RGBW DMX

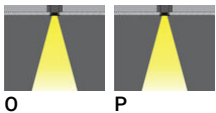


microPrim™

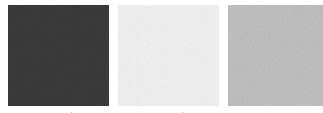
Luminaire Structure

- Die-cast aluminium end-caps and extruded aluminium profile with powder coating
- Passive thermal management
- Stainless steel fasteners in grade 304 with zinc flake coating (ZFC)
- PMMA diffuser with Opal (UGR <19) and micro prismatic (UGR <13) options for better glare control
- Integral control gear
- Stainless steel brackets and screws for mounting
- Down light distribution only
- Wireless control available through Bluetooth connection
- Daylight and occupancy sensor options
- Emergency module (1 or 3 hours) is available upon request with 3 options (BASIC, SELF-TEST, PRO-DALI)

Optic

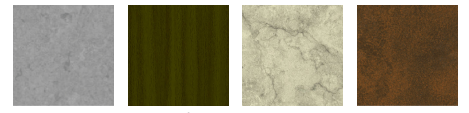


Product colour

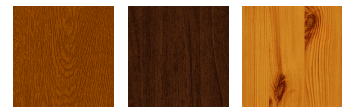


01 - Black (RAL 9011) 03 - White (RAL 9003) 05 - Matt Silver (RAL 9006)

Special finishes upon request



SU01 - Concrete - Urban SU02 - Softscape - Urban SU03 - Stone - Urban SU04 - Corten - Urban



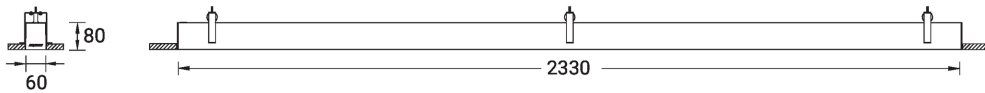
SW01 - Oak - Woodland SW02 - Walnut - Woodland SW03 - Pine - Woodland

NYBRO 4 (NYB-80357)

Technical information

Material	Aluminium	Input voltage	220-240 V 50/60 Hz	Dimming type	DMX, DMX/RDM
Light source	384 LED	Optic	O, P	Product colours	Black, White, Matt Silver, Concrete - Urban, Softscape - Urban, Stone - Urban, Corten - Urban, Oak - Woodland, Walnut - Woodland, Pine - Woodland
Power	84 W	CCT / CRI	RGBW40		
Lumen	4000 lm	Bug	B1-U0-G0, B1-U0-G1		
Efficacy	87 lm/W	ULR	0%	Weight	6.8 kg
Driver option	Integral control gear	ULOR	0%	Operating temperature	-20 °C to 40 °C
Driver	Constant current (CC)	CIE flux code n°3	96, 98	Variants (DMX/RDM)	Compatible with EN/ IEC 60598-2-22: Suitable for emergency installations as central supply, non-maintained (Z0)

NYB-80357



NYBRO 4 (NYB-80357)**Accessory**

Continuous-coupler bracket
(60/70 mm Down & 60 mm
Down & Up profile)
A81581



DMX Control System
Control-DMX



DMX/RDM Control System
Control-DMX-RDM