

STEAMER 12 (SE-90032-LC)



Product description

Round - Large - LIGHTCONNECT™



Luminaire Structure

- Die-cast aluminium housing
- Pre-treated before powder coating ensuring high corrosion resistance
- Single cable entry
- One IP68 connector supplied with 0.5 m of 3x1.0 sqmm outdoor cable
- Stainless steel fasteners in grade 304 with zinc flake coating (ZFC)
- Durable silicone rubber gasket
- Clear toughened glass
- High-efficiency PMMA lens
- Integral control gear
- Surge protection 10kV

Optic



Product colour



Special finishes upon request



STEAMER 12 (SE-90032-LC)

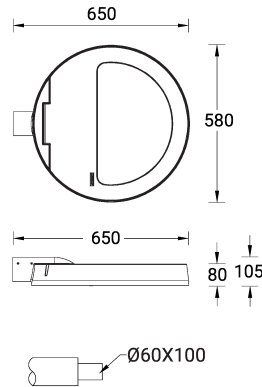
Technical information

Material	Aluminium
Light source	96 LED
Power	209 W
Lumen	23616 - 28820 lm
Efficacy	113 - 138 lm/W
Driver option	Integral control gear
Driver	Constant current (CC)
Input voltage	220-240 V 50/60 Hz
Optic	M, W, EW, T2, T3, T4, ME
Optic value	30°, 57°, 105°x115°, 136°x51°, 119°x86°, 102°x74°, 137°x58°

CCT / CRI	2700K CRI80, 3000K CRI80, 4000K CRI80
Bug	B3-U0-G3, B4-U0-G1, B5-U0-G1
ULR	0%, <1%
ULOR	0%, <1%
CIE flux code n°3	97, 98, 99
Dimming type	DALI
Product colours	Black, Dark Grey, White, Matt Silver, Bronze, Concrete - Urban, Softscape - Urban, Stone - Urban, Corten - Urban, Oak - Woodland, Walnut - Woodland, Pine - Woodland
Weight	15.4 kg
Operating temperature	-20 °C to 40 °C
EPA (m2)	0.070

Cable	One IP68 connector supplied with 0.5 m of 3x1.0 sqmm outdoor cable
Through wiring	Single cable entry
Lens / Reflector / Optic	Clear toughened glass, High-efficiency PMMA lens
MacAdam Ellipse	3 SDCM
Lifetime L90B10 (hours)	> 90,000
Lifetime L80B10 (hours)	> 90,000
Lifetime L80B50 (hours)	> 90,000
Variants (DALI)	Compatible with EN/ IEC 60598-2-22: Suitable for emergency installations as central supply, non-maintained (Z0)

SE-90032



STEAMER 12 (SE-90032-LC)

Accessory



Double adjustable 50°
A91760



Double arm mount
A91160



Double arm mount
A91360



Double arm mount
A91560



Single adjustable 50°
A91660



Single arm mount
A91060



Single arm mount
A91260



Single arm mount
A91460



Zhaga Book 18 socket (Down)
A90991-D



Zhaga Book 18 socket (Up)
A90991-U



NEMA 7 socket
A90891



Triple arm mount - Type 1
A92260



Triple arm mount - Type 2
A92360



Motion sensor - PIR - DALI - Up
to 3 m
A91691-L2



Motion sensor - PIR - DALI - Up
to 12 m
A91691-L7



DALI Control System
Control-DALI