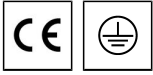


AUBAINE 2 (AUB-20011)



Product description

2 sides - Supplied with specific 9.160 m square, straight galvanised steel pole: SPC290150-AUB-20011-9030, SPC290150-AUB-20011-9040 1050 W



Luminaire Structure

- Formed sheet aluminium housing
- Pre-treated before powder coating ensuring high corrosion resistance
- Single cable entry
- One IP68 connector supplied with 0.3 m of 3x1.0 sqmm outdoor cable
- Stainless steel fasteners in grade 304 with zinc flake coating (ZFC)

- Durable silicone rubber gasket
- Clear toughened glass
- Opal toughened glass diffuser for around the pole
- Integral control gear
- Maximum wind load resistance is 100 km/h

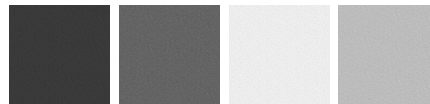
- Surge protection 10kV
- Square, straight galvanised steel pole
- Aluminum plates cover all 4 sides of the post at the bottom

Optic



T2 T3 T4

Product colour

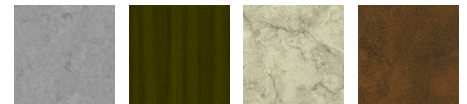


01 - Black (RAL 9011) 02 - Dark Grey (RAL 7043) 03 - White (RAL 9003) 05 - Matt Silver (RAL 9006)



06 - Bronze (RAL 6014)

Special finishes upon request



SU01 - Concrete - Urban SU02 - Softscape - Urban SU03 - Stone - Urban SU04 - Corten - Urban



SW01 - Oak - Woodland SW02 - Walnut - Woodland SW03 - Pine - Woodland

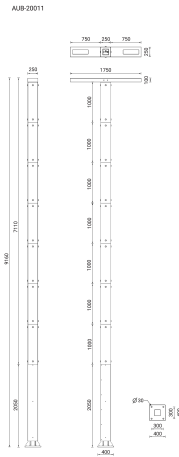
AUBAINE 2 (AUB-20011)

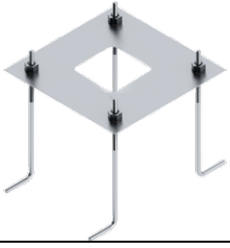
Technical information

Material	Aluminium
Light source	2 x 24 LED - LED tape
Power	108 W
Lumen	11002 - 12386 lm
Efficacy	102 - 115 lm/W
Driver option	Integral control gear
Driver	Constant current (CC)
Input voltage	220-240 V 50/60 Hz
Optic	T2, T3, T4

Optic value	140°x47°, 134°x68°, 92°x78°
CCT / CRI	3000K CRI80, 4000K CRI80
Bug	B1-U0-G1
ULR	<1%
ULOR	<1%
CIE flux code n°3	98
Dimming type	On/Off, 1-10V, DALI
Product colours	Black, Dark Grey, White, Matt Silver, Bronze, Concrete - Urban, Softscape - Urban, Stone - Urban, Corten - Urban, Oak - Woodland, Walnut - Woodland, Pine - Woodland
Weight	312.0 kg

EPA (m2)	0.175
Cable	One IP68 connector supplied with 0.3 m of 3x1.0 sqmm outdoor cable
Cable	One IP68 connector supplied with 0.3 m of 3x1.0 sqmm outdoor cable
Through wiring	Single cable entry
Lens / Reflector / Optic	Clear toughened glass, Opal toughened glass diffuser for around the pole
MacAdam Ellipse	3 SDCM
Lifetime L90B10 (hours)	> 90,000
Lifetime L80B10 (hours)	> 90,000
Lifetime L80B50 (hours)	> 90,000
Variants (On/Off, 1-10V, DALI)	Compatible with EN/ IEC 60598-2-22: Suitable for emergency installations as central supply, non-maintained (Z0)



AUBAINE 2 (AUB-20011)**Accessory**

Anchor bolt
A23491



DALI Control System
Control-DALI

Pole (required)

3000K - 1050 W - 9.160 m -
Square, straight galvanised steel
with frosted glass pole for
AUBAINE
SPC290150-AUB-20011-9030



4000K - 1050 W - 9.160 m -
Square, straight galvanised steel
with frosted glass pole for
AUBAINE
SPC290150-AUB-20011-9040