

NYBRO 10 (NYB-90221)



Product description

Down - 60x80 mm - 1178 mm



microPrim™

Luminaire Structure

- Die-cast aluminium end-caps and extruded aluminium profile with powder coating
- Passive thermal management
- Single cable entry
- Stainless steel fasteners in grade 304 with zinc flake coating (ZFC)
- Durable silicone rubber gasket

- PMMA diffuser with Opal (UGR <19) and micro prismatic (UGR <13) options for better glare control
- Integral control gear
- Stainless steel brackets and screws for mounting
- Up and down light distribution options
- Wireless control available through Bluetooth connection

- Daylight and occupancy sensor options
- Emergency module (1 or 3 hours) is available upon request with 3 options (BASIC, SELF-TEST, PRO-DALI)
- Track can be integrated into NYBRO products upon request and upon receipt of design drawings

Optic



Product colour



Special finishes upon request



NYBRO 10 (NYB-90221)

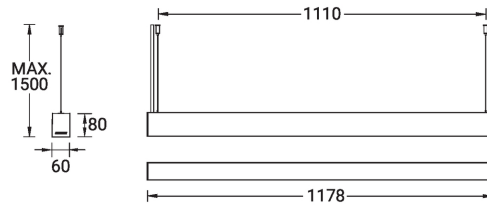
Technical information

Material	Aluminium
Light source	144 LED
Power	19 W
Lumen	1829 - 2293 lm
Efficacy	96 - 121 lm/W
Driver option	Integral control gear
Driver	Constant current (CC)

Input voltage	220-240 V 50/60 Hz
Optic	O, P
Optic value	Opal, Micro-prismatic
CCT / CRI	3000K CRI80, 4000K CRI80
Dimming type	On/Off, 1-10V, DALI
Product colours	Black, White, Matt Silver, Concrete - Urban, Softscape - Urban, Stone - Urban, Corten - Urban, Oak - Woodland, Walnut - Woodland, Pine - Woodland
Weight	3.5 kg

Operating temperature	-20 °C to 40 °C
MacAdam Ellipse	3 SDCM
Lifetime L90B10 (hours)	> 23,000
Lifetime L80B10 (hours)	> 45,000
Lifetime L80B50 (hours)	> 50,000
Variants (1-10V, DALI)	Compatible with EN/ IEC 60598-2-22: Suitable for emergency installations as central supply, non- maintained (Z0)

NYB-90221

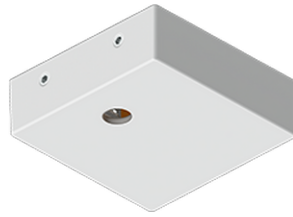


NYBRO 10 (NYB-90221)

Accessory



Continuous-coupler bracket
(60/70 mm Down & 60 mm
Down & Up profile)
A81581



Supply cable surface mounting
box
A80981



Wireless bluetooth converter
A90291



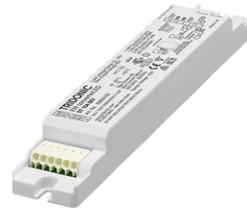
Xpress wireless switch
A90591



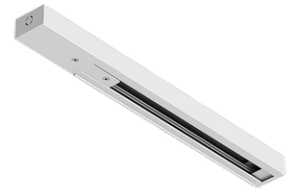
Emergency module - 50V -
BASIC
EM50V-BA



Emergency module - 50V - PRO-
DALI
EM50V-DA



Emergency module - 50V - SELF-
TEST
EM50V-ST



Integrated track - 3 phase - DALI
for NYBRO
A81491



Integrated track - 3 phase - On-
off for NYBRO
A81391



DALI Control System
Control-DALI