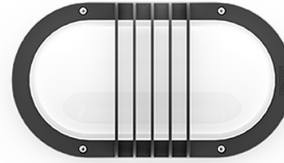


**CAPSULE 1 (CA-30305-1MS)**



**Product description**

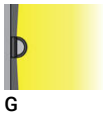
With integrated motion sensor



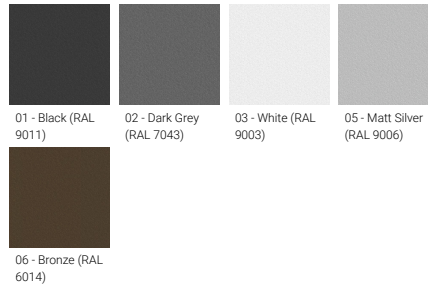
**Luminaire Structure**

- Die-cast aluminium housing and frame
- Pre-treated before powder coating ensuring high corrosion resistance
- Two cable entries for through wiring
- Stainless steel fasteners in grade 304 with zinc flake coating (ZFC)
- Durable silicone rubber gasket
- Opal UV-stabilised polycarbonate diffuser
- Integral control gear

**Optic**



**Product colour**



**Special finishes upon request**



**CAPSULE 1 (CA-30305-1MS)**

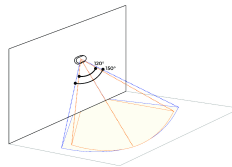
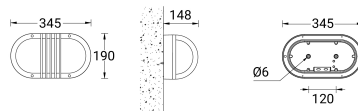
**Technical information**

<b>Material</b>	Aluminium
<b>Light source</b>	96 LED
<b>Power</b>	15 W
<b>Lumen</b>	1247 - 1313 lm
<b>Efficacy</b>	83 - 88 lm/W
<b>Driver option</b>	Integral control gear
<b>Driver</b>	Constant current (CC)
<b>Input voltage</b>	220-240 V 50/60 Hz
<b>Optic</b>	G

<b>Optic value</b>	99°x165°
<b>CCT / CRI</b>	3000K CRI80, 4000K CRI80
<b>Bug</b>	B1-U3-G1
<b>ULR</b>	15%
<b>ULOR</b>	15%
<b>CIE flux code n°3</b>	85
<b>Dimming type</b>	On/Off, 1-10V
<b>Product colours</b>	Black, Dark Grey, White, Matt Silver, Bronze, Concrete - Urban, Softscape - Urban, Stone - Urban, Corten - Urban, Oak - Woodland, Walnut - Woodland, Pine - Woodland
<b>Weight</b>	2.5 kg

<b>Operating temperature</b>	-20 °C to 50 °C
<b>Through wiring</b>	Two cable entries for through wiring
<b>Lens / Reflector / Optic</b>	Opal UV-stabilised polycarbonate diffuser
<b>MacAdam Ellipse</b>	3 SDCM
<b>Lifetime L90B10 (hours)</b>	> 37,000
<b>Lifetime L80B10 (hours)</b>	> 78,000
<b>Lifetime L80B50 (hours)</b>	> 86,000
<b>Variants (On/Off, 1-10V)</b>	Compatible with EN/ IEC 60598-2-22: Suitable for emergency installations as central supply, non-maintained (Z0)

CA-30305-1MS



**CAPSULE**

**MacAdam-ellipse: Microbeam (1-10 V)**  
 Adjustable sensor (10 seconds - 10 minutes)  
 10° beam angle  
 Sensor beam diameter:  
 CA-30305-MS(2) 0.8 mm  
 CA-30305-MS(3) 0.9 mm  
 CA-30305-MS(2) 0.8 mm  
 CA-30305-MS(3) 0.9 mm

**MacAdam-ellipse: Microbeam (0-10V)**  
 Adjustable sensor (5 seconds - 30 minutes)  
 10° beam angle  
 Sensor beam diameter:  
 CA-30305-MS(2) 0.8 mm  
 CA-30305-MS(3) 0.9 mm  
 CA-30305-MS(4) 1.2 mm  
 CA-30305-MS(5) 1.3 - 2.4 mm

**CAPSULE 1** (CA-30305-1MS)**Accessory**

---



---

DALI Control System  
**Control-DALI**

---



---

Remote controller for the motion  
sensor - 1-10V (A34191)  
**A34391**

---