

MALMO 2 (MAL-80112)**Product description**

Down - Trimless - 395 mm



microPrim™

Luminaire Structure

- Extruded aluminium bended profile with powder coating
- Passive thermal management
- Stainless steel fasteners in grade 304 with zinc flake coating (ZFC)
- PMMA diffuser with Opal (UGR <19) and micro prismatic (UGR <13) options for better glare control

- Integral control gear
- Stainless steel brackets and screws for mounting
- Down light distribution only
- Wireless control available through Bluetooth connection

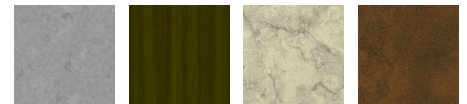
- Daylight and occupancy sensor options
- Emergency module (1 or 3 hours) is available upon request with 3 options (BASIC, SELF-TEST, PRO-DALI)

Optic**Product colour**

01 - Black (RAL 9011)

03 - White (RAL 9003)

05 - Matt Silver (RAL 9006)

Special finishes upon request

SU01 - Concrete - Urban

SU02 - Softscape - Urban

SU03 - Stone - Urban

SU04 - Corten - Urban



SW01 - Oak - Woodland

SW02 - Walnut - Woodland

SW03 - Pine - Woodland

MALMO 2 (MAL-80112)

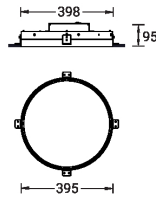
Technical information

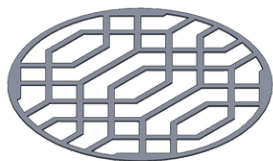
Material	Aluminium
Light source	276 LED
Power	37 W
Lumen	3559 - 4256 lm
Efficacy	65 - 77 lm/W
Driver option	Integral control gear
Driver	Constant current (CC)

Input voltage	220-240 V 50/60 Hz
Optic	O, P
Optic value	107°, 94°
CCT / CRI	3000K CRI80, 4000K CRI80
Bug	B2-U0-G1
ULR	0%
ULOR	0%

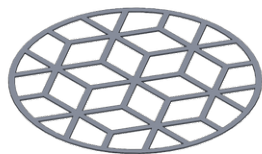
CIE flux code n°3	96, 98
Dimming type	On/Off, 1-10V, DALI
Product colours	Black, White, Matt Silver, Concrete - Urban, Softscape - Urban, Stone - Urban, Corten - Urban, Oak - Woodland, Walnut - Woodland, Pine - Woodland
Weight	3.4 kg
Operating temperature	-20 °C to 40 °C
Variants (1-10V, DALI)	Compatible with EN/ IEC 60598-2-22: Suitable for emergency installations as central supply, non-maintained (Z0)

MAL-80112

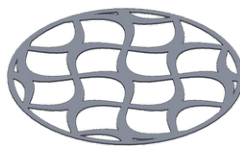


MALMO 2 (MAL-80112)**Accessory**

Decorative pattern - Type A for
MALMO 400 mm
A90921



Decorative pattern - Type B for
MALMO 400 mm
A92321



Decorative pattern - Type C for
MALMO 400 mm
A93721



Wireless bluetooth converter
A90291



Xpress wireless switch
A90591



DALI Control System
Control-DALI