

**MALTA 1** (MAT-30002) (Version 1)**Product description**

Without remote driver - Constant voltage (CV) 24 V -  
Stainless steel - IP65 - Tunable White

**Luminaire Structure**

- Aluminium or stainless steel body
- Single cable entry
- One cable gland supplied with 1 m of 2x1.0 sqmm outdoor cable
- Stainless steel fasteners in grade 304 with zinc flake coating (ZFC)
- Durable silicone rubber gasket
- High-efficiency PMMA lens
- Remote driver (not included)
- Standard unit length is 1 m, different lengths are available upon request
- All handrails and components are delivered completely pre-assembled for on-site installation
- LIGMAN prepares project handrail solutions according to layout drawings, elevations and project's brief; offering an end-to-end solution from concept through to implementation

**Optic****G****Product colour**

00 - Stainless Steel

**MALTA 1** (MAT-30002) (Version 1)

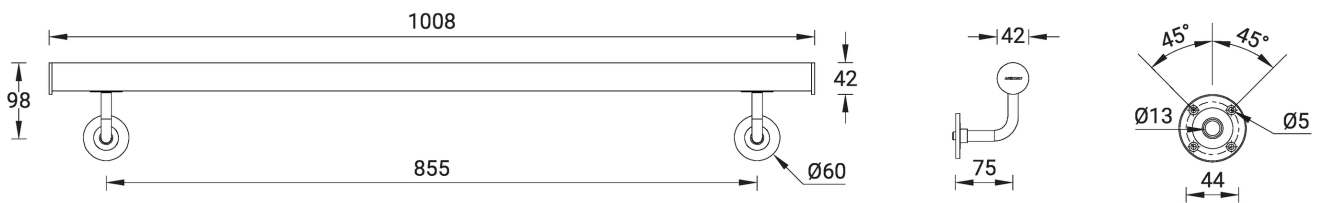
**Technical information**

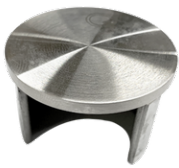
<b>Material</b>	Stainless Steel
<b>Light source</b>	84 LED/m
<b>Power</b>	12 W
<b>Lumen</b>	376 lm
<b>Efficacy</b>	42 lm/W
<b>Driver option</b>	Remote driver (not included)
<b>Driver</b>	Constant voltage (CV)
<b>Input voltage</b>	24 VDC

<b>Optic</b>	G
<b>Optic value</b>	60°x111°
<b>CCT / CRI</b>	TW (2700K - 6500K)
<b>Bug</b>	B0-U0-G0
<b>ULR</b>	0%
<b>ULOR</b>	0%
<b>CIE flux code n°3</b>	98
<b>Dimming type</b>	DALI

<b>Product colours</b>	Stainless Steel
<b>Weight</b>	3.5 kg/m
<b>Operating temperature</b>	-20 °C to 40 °C
<b>Cable</b>	One cable gland supplied with 1 m of 2x1.0 sqmm outdoor cable
<b>Through wiring</b>	Single cable entry
<b>Lens / Reflector / Optic</b>	High-efficiency PMMA lens

MAT-30002



**MALTA 1 (MAT-30002) (Version 1)****Accessory**Connector for cap rail - Straight  
**A30181**Connector for cap rail - Flush  
elbow 90°  
**A30281**Connector for cap rail -  
Adjustable flush angle, 135°  
downwards  
**A30481**Connector for cap rail -  
Adjustable flush angle, 135°  
upwards  
**A30381**End cap for cap rail  
**A30581**Wall bracket  
**A30681**DALI Control System  
**Control-DALI**Driver (CV) - PWM - 100 W - IP65  
- 24 V  
**A33191-PW**Driver (CV) - PWM - 150 W - IP65  
- 24 V  
**A33291-PW**Driver (CV) - PWM - 250 W - IP65  
- 24 V  
**A33391-PW**Driver (CV) - PWM - 320 W - IP65  
- 24 V  
**A33491-PW**Constant voltage dimmer - 4  
Channel  
**A610291**