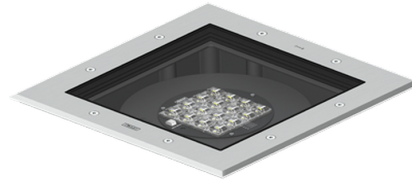


**KIOS 10 (KI-60667)****Product description**

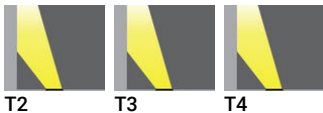
With recessing box / driver - Embross frame



microVos

**Luminaire Structure**

- Die-cast aluminium housing
- Pre-treated before powder coating ensuring high corrosion resistance
- 5.5 mm thick front ring in grade 316 stainless steel
- Single cable entry, through wiring upon request
- Stainless steel fasteners in grade 316
- Durable silicone rubber gasket
- Clear toughened glass
- High-efficiency PMMA lens
- Integral control gear
- Recessing box in high-density polyethylene is included
- Suitable for drive-over with a maximum load of 2000 kg
- Vehicles with pneumatic tires can drive over the luminaire but the speed must not exceed 50 km/h
- Load is transferred by the housing to the foundation
- The distance between the luminaire and the illuminated surface should be at least 0.5 m

**Optic****Product colour**

00 - Stainless Steel

**KIOS 10** (KI-60667)

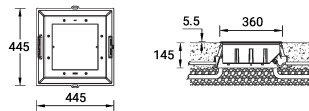
**Technical information**

<b>Material</b>	Stainless Steel
<b>Light source</b>	16 LED
<b>Power</b>	25 W
<b>Lumen</b>	2297 - 2739 lm
<b>Efficacy</b>	92 - 110 lm/W
<b>Driver option</b>	Integral control gear
<b>Driver</b>	Constant current (CC)
<b>Input voltage</b>	220-240 V 50/60 Hz
<b>Optic</b>	T2, T3, T4

<b>Optic value</b>	136°x 48°, 136°x 67°, 92°x 73°
<b>CCT / CRI</b>	2700K CRI80, 3000K CRI80, 4000K CRI80
<b>Bug</b>	B0-U5-G0
<b>ULR</b>	100%
<b>ULOR</b>	100%
<b>Dimming type</b>	On/Off, 1-10V, DALI
<b>Product colours</b>	Stainless Steel
<b>Weight</b>	11.8 kg
<b>Operating temperature</b>	-20 °C to 40 °C

<b>Through wiring</b>	Single cable entry, through wiring upon request
<b>Lens / Reflector / Optic</b>	Clear toughened glass, High-efficiency PMMA lens
<b>MacAdam Ellipse</b>	3 SDCM
<b>Lifetime L90B10 (hours)</b>	> 90,000
<b>Lifetime L80B10 (hours)</b>	> 90,000
<b>Lifetime L80B50 (hours)</b>	> 90,000
<b>Variants (1-10V)</b>	Compatible with EN/ IEC 60598-2-22: Suitable for emergency installations as central supply, non-maintained (Z0)

KI-60667



**KIOS 10** (KI-60667)**Accessory**

Anti slip glass  
**A61712**



Connector IP68 3 Pin Power  
**A62591**



DALI Control System  
**Control-DALI**



Connector IP68 5 Pin Power +  
Signal  
**A613191**