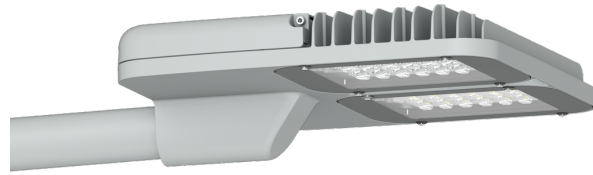


POWERMISSION 3 (PO39-GP080)



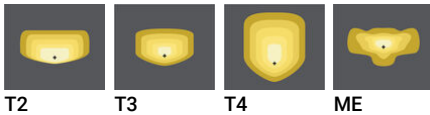
Luminaire Structure

- Die-cast aluminium housing
- Pre-treated before powder coating ensuring high corrosion resistance
- Thermal heat dissipation body

- Stainless steel fasteners in grade 304 with zinc flake coating (ZFC)
- Durable silicone rubber gasket
- Clear toughened glass

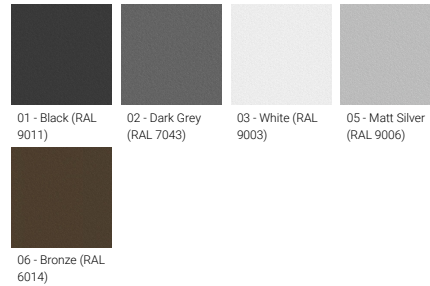
- Integral control gear
- Surge protection 10kV

Optic



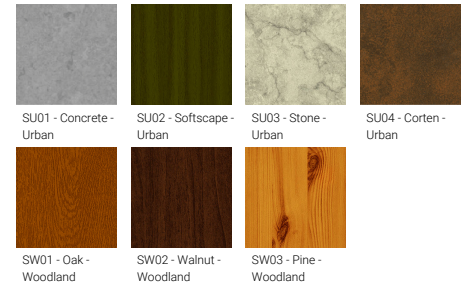
T2 T3 T4 ME

Product colour



01 - Black (RAL 9011) 02 - Dark Grey (RAL 7043) 03 - White (RAL 9003) 05 - Matt Silver (RAL 9006)
06 - Bronze (RAL 6014)

Special finishes upon request



SU01 - Concrete - Urban SU02 - Softscape - Urban SU03 - Stone - Urban SU04 - Corten - Urban
SW01 - Oak - Woodland SW02 - Walnut - Woodland SW03 - Pine - Woodland

POWERMISSION 3 (PO39-GP080)
Technical information

Material	Aluminium	Input voltage	220-240 V 50/60 Hz	Operating temperature	-20 °C to 40 °C
Light source	48 LED	Optic	T2, T3, T4, ME	Lens / Reflector / Optic	Clear toughened glass
Power	78 W	Optic value	143°x54°, 142°x69°, 99°x78°, 138°x37°	MacAdam Ellipse	3 SDCM
Lumen	8178 - 9165 lm	CCT / CRI	3000K CRI80, 4000K CRI80	Lifetime L90B10 (hours)	> 90,000
Efficacy	78 - 87 lm/W	Dimming type	On/Off, 1-10V, DALI	Lifetime L80B10 (hours)	> 90,000
Driver option	Integral control gear	Product colours	Black, Dark Grey, White, Matt Silver, Bronze, Concrete - Urban, Softscape - Urban, Stone - Urban, Corten - Urban, Oak - Woodland, Walnut - Woodland, Pine - Woodland	Lifetime L80B50 (hours)	> 90,000
Driver	Constant current (CC)	Weight	10.6 kg		