

MALTA 3 (MAT-30022) (Version 1)



Product description

Without remote driver - Constant voltage (CV) 24 V - Aluminium - IP65 - Tunable White



microPrim™

Luminaire Structure

- Aluminium or stainless steel body
- Single cable entry
- One cable gland supplied with 1 m of 2x1.0 sqmm outdoor cable
- Stainless steel fasteners in grade 304 with zinc flake coating (ZFC)

- Durable silicone rubber gasket
- High-efficiency PMMA lens
- Remote driver (not included)
- Standard unit length is 1 m, different lengths are available upon request

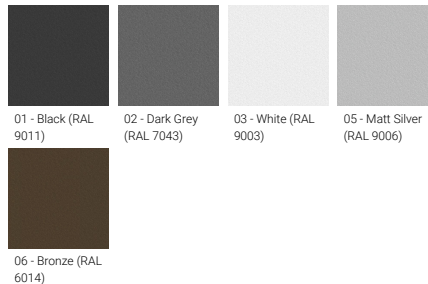
- All handrails and components are delivered completely pre-assembled for on-site installation
- LIGMAN prepares project handrail solutions according to layout drawings, elevations and project's brief, offering an end-to-end solution from concept through to implementation

Optic

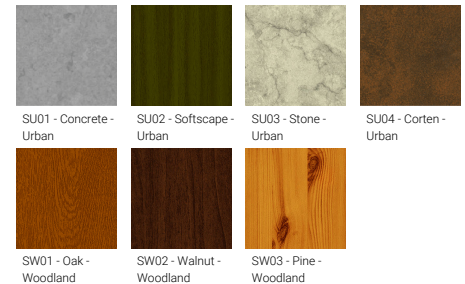


G

Product colour



Special finishes upon request



MALTA 3 (MAT-30022) (Version 1)

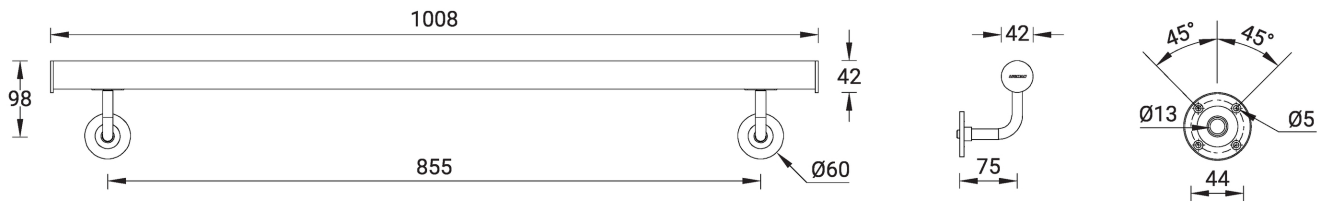
Technical information

Material	Aluminium
Light source	84 LED/m
Power	12 W
Lumen	376 lm
Efficacy	42 lm/W
Driver option	Remote driver (not included)
Driver	Constant voltage (CV)
Input voltage	24 VDC

Optic	G
Optic value	60°x111°
CCT / CRI	TW (2700K - 6500K)
Bug	B0-U0-G0
ULR	0%
ULOR	0%
CIE flux code n°3	98
Dimming type	DALI

Product colours	Black, Dark Grey, White, Matt Silver, Bronze, Concrete - Urban, Softscape - Urban, Stone - Urban, Corten - Urban, Oak - Woodland, Walnut - Woodland, Pine - Woodland
Weight	2.1 kg/m
Operating temperature	-20 °C to 40 °C
Cable	One cable gland supplied with 1 m of 2x1.0 sqmm outdoor cable
Through wiring	Single cable entry
Lens / Reflector / Optic	High-efficiency PMMA lens

MAT-30022



MALTA 3 (MAT-30022) (Version 1)**Accessory**

Connector for cap rail - Straight
A30181



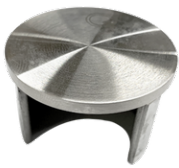
Connector for cap rail - Flush
elbow 90°
A30281



Connector for cap rail -
Adjustable flush angle, 135°
downwards
A30481



Connector for cap rail -
Adjustable flush angle, 135°
upwards
A30381



End cap for cap rail
A30581



Wall bracket
A30681



DALI Control System
Control-DALI



Driver (CV) - PWM - 100 W - IP65
- 24 V
A33191-PW



Driver (CV) - PWM - 150 W - IP65
- 24 V
A33291-PW



Driver (CV) - PWM - 250 W - IP65
- 24 V
A33391-PW



Driver (CV) - PWM - 320 W - IP65
- 24 V
A33491-PW



Constant voltage dimmer - 4
Channel
A610291