

NYBRO 1 (NYB-80024)



Product description

Down - 50x80 mm - 1188 mm



microPrim™

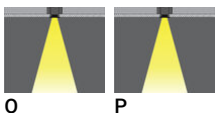
Luminaire Structure

- Die-cast aluminium end-caps and extruded aluminium profile with powder coating
- Passive thermal management
- Stainless steel fasteners in grade 304 with zinc flake coating (ZFC)
- PMMA diffuser with Opal (UGR <19) and micro prismatic (UGR <13) options for better glare control

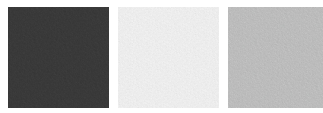
- Integral control gear
- Stainless steel brackets and screws for mounting
- Down light distribution only
- Wireless control available through Bluetooth connection

- Daylight and occupancy sensor options
- Emergency module (1 or 3 hours) is available upon request with 3 options (BASIC, SELF-TEST, PRO-DALI)

Optic

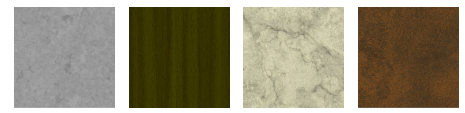


Product colour

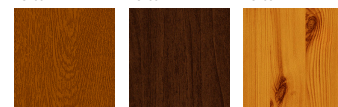


01 - Black (RAL 9011) 03 - White (RAL 9003) 05 - Matt Silver (RAL 9006)

Special finishes upon request



SU01 - Concrete - Urban SU02 - Softscape - Urban SU03 - Stone - Urban SU04 - Corten - Urban



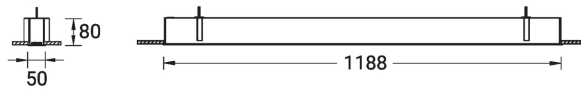
SW01 - Oak - Woodland SW02 - Walnut - Woodland SW03 - Pine - Woodland

NYBRO 1 (NYB-80024)

Technical information

Material	Aluminium	Optic	O, P	Product colours	Black, White, Matt Silver, Concrete - Urban, Softscape - Urban, Stone - Urban, Corten - Urban, Oak - Woodland, Walnut - Woodland, Pine - Woodland
Light source	144 LED	Optic value	100°x86°, 93°x90°	Weight	2.9 kg
Power	25 W	CCT / CRI	TW (2700K - 6500K)	Operating temperature	-20 °C to 40 °C
Lumen	2250 lm	Bug	B1-U1-G0, B1-U1-G1	MacAdam Ellipse	3 SDCM
Efficacy	94 lm/W	ULR	0%	Lifetime L90B10 (hours)	> 23,000
Driver option	Integral control gear	ULOR	0%	Lifetime L80B10 (hours)	> 45,000
Driver	Constant current (CC)	CIE flux code n°3	96, 98	Lifetime L80B50 (hours)	> 50,000
Input voltage	220-240 V 50/60 Hz	Dimming type	DALI	Variants (DALI)	Compatible with EN/ IEC 60598-2-22: Suitable for emergency installations as central supply, non-maintained (Z0)

NYB-80024



NYBRO 1 (NYB-80024)**Accessory**



Continuous-coupler bracket
(40/50 mm Down profile)
A81881
