

NYBRO 10 (NYB-90266)



Product description

Down - 60x80 mm - 2906 mm - RGBW



microPrim™

Luminaire Structure

- Die-cast aluminium end-caps and extruded aluminium profile with powder coating
- Passive thermal management
- Single cable entry
- Stainless steel fasteners in grade 304 with zinc flake coating (ZFC)
- Durable silicone rubber gasket

- PMMA diffuser with Opal (UGR <19) and micro prismatic (UGR <13) options for better glare control
- Integral control gear
- Stainless steel brackets and screws for mounting
- Up and down light distribution options
- Wireless control available through Bluetooth connection

- Daylight and occupancy sensor options
- Emergency module (1 or 3 hours) is available upon request with 3 options (BASIC, SELF-TEST, PRO-DALI)
- Track can be integrated into NYBRO products upon request and upon receipt of design drawings

Optic



Product colour



Special finishes upon request

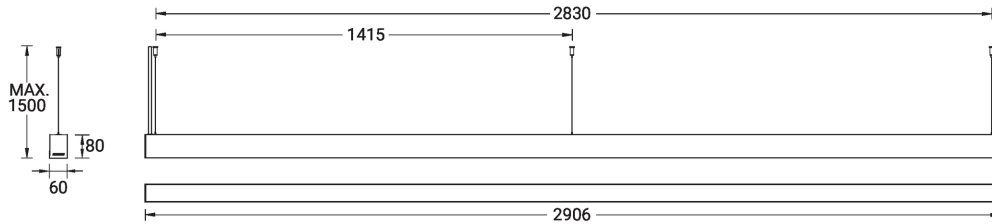


NYBRO 10 (NYB-90266)

Technical information

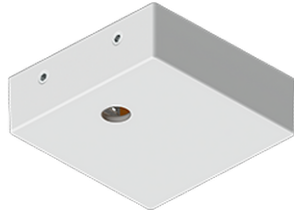
Material	Aluminium	Driver option	Integral control gear	CCT / CRI	RGBW40
Light source	480 LED	Driver	Constant current (CC)	Dimming type	Bluetooth
Power	105 W	Input voltage	220-240 V 50/60 Hz	Product colours	Black, White, Matt Silver, Concrete - Urban, Softscape - Urban, Stone - Urban, Corten - Urban, Oak - Woodland, Walnut - Woodland, Pine - Woodland
Lumen	7260 lm	Optic	O, P		
Efficacy	69 lm/W	Optic value	Opal, Micro-prismatic		
				Weight	8.6 kg
				Operating temperature	-20 °C to 40 °C

NYB-90266



NYBRO 10 (NYB-90266)**Accessory**

Continuous-coupler bracket
(60/70 mm Down & 60 mm
Down & Up profile)
A81581



Supply cable surface mounting
box
A80981



Wireless bluetooth converter
A90291



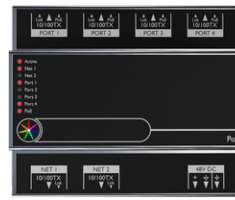
Xpress wireless switch
A90591



Integrated track - 3 phase - DALI
for NYBRO
A81491



Integrated track - 3 phase - On-
off for NYBRO
A81391



PoE Connect
A64591



DALI Control System
Control-DALI