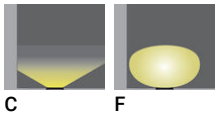


**HARRIER 1 (HA-60036-S)****Product description**

Integral control gear - With recessing box - Round - Stainless steel frame

**Luminaire Structure**

- Die-cast aluminium housing
- Pre-treated before powder coating ensuring high corrosion resistance
- 6 mm thick front ring in grade 316 stainless steel or aluminium
- Single cable entry, through wiring upon request
- One cable gland supplied with 1 m of 3x1.0 sqmm outdoor cable
- Stainless steel fasteners in grade 316
- Durable silicone rubber gasket
- Clear or frosted toughened glass
- Integral control gear
- Recessing box in high-density polyethylene is included
- Suitable for walk-over with a maximum load of 200 kg

**Optic**

C F

**Product colour**

00 - Stainless Steel

**HARRIER 1 (HA-60036-S)**

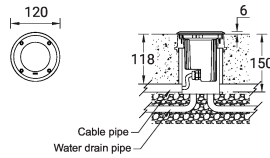
**Technical information**

<b>Material</b>	Stainless Steel
<b>Light source</b>	12 LED
<b>Power</b>	6 W
<b>Lumen</b>	163 - 291 lm
<b>Efficacy</b>	27 - 49 lm/W
<b>Driver option</b>	Integral control gear
<b>Driver</b>	Constant current (CC)
<b>Input voltage</b>	220-240 V 50/60 Hz

<b>Optic</b>	C, F
<b>Optic value</b>	90°, 78°
<b>CCT / CRI</b>	3000K CRI80, 4000K CRI80
<b>Bug</b>	B0-U3-G0
<b>ULR</b>	100%
<b>ULOR</b>	100%
<b>Dimming type</b>	On/Off
<b>Product colours</b>	Stainless Steel

<b>Weight</b>	0.7 kg
<b>Operating temperature</b>	-20 °C to 50 °C
<b>Cable</b>	One cable gland supplied with 1 m of 3x1.0 sqmm outdoor cable
<b>Through wiring</b>	Single cable entry, through wiring upon request
<b>Lens / Reflector / Optic</b>	Clear or frosted toughened glass
<b>Variants (On/Off)</b>	Compatible with EN/ IEC 60598-2-22: Suitable for emergency installations as central supply, non-maintained (Z0)

HA-60036-S



**HARRIER 1** (HA-60036-S)**Accessory**

---



---

Connector IP68 3 Pin Power  
**A62591**

---



---

Connector IP68 5 Pin Power +  
Signal  
**A613191**

---