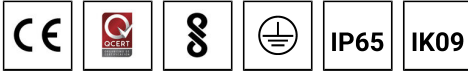


**ABACUS 1 (AB-30001)**



**Product description**

Medium



**Luminaire Structure**

- Die-cast aluminium frame and body
- Pre-treated before powder coating ensuring high corrosion resistance
- Single cable entry
- Stainless steel fasteners in grade 304 with zinc flake coating (ZFC)
- Durable silicone rubber gasket
- Frosted glass diffuser
- Integral control gear
- Optional surface mounting box for easy wiring or conduit connection when wiring from behind is not possible

**Optic**



G

**Product colour**



**Special finishes upon request**



**ABACUS 1 (AB-30001)**

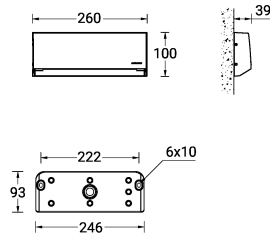
**Technical information**

<b>Material</b>	Aluminium
<b>Light source</b>	30 LED
<b>Power</b>	11 W
<b>Lumen</b>	765 - 783 lm
<b>Efficacy</b>	70 - 71 lm/W
<b>Driver option</b>	Integral control gear
<b>Driver</b>	Constant current (CC)
<b>Input voltage</b>	220-240 V 50/60 Hz
<b>Optic</b>	G

<b>Optic value</b>	70°x102°
<b>CCT / CRI</b>	3000K CRI80, 4000K CRI80
<b>Bug</b>	B1-U2-G1
<b>ULR</b>	2%
<b>ULOR</b>	2%
<b>CIE flux code n°3</b>	96
<b>Dimming type</b>	On/Off
<b>Product colours</b>	Black, Dark Grey, White, Matt Silver, Bronze, Concrete - Urban, Softscape - Urban, Stone - Urban, Corten - Urban, Oak - Woodland, Walnut - Woodland, Pine - Woodland
<b>Weight</b>	1.3 kg

<b>Operating temperature</b>	-20 °C to 40 °C
<b>Through wiring</b>	Single cable entry
<b>Lens / Reflector / Optic</b>	Frosted glass diffuser
<b>MacAdam Ellipse</b>	3 SDCM
<b>Lifetime L90B10 (hours)</b>	> 23,000
<b>Lifetime L80B10 (hours)</b>	> 45,000
<b>Lifetime L80B50 (hours)</b>	> 49,000
<b>Variants (On/Off)</b>	Compatible with EN/ IEC 60598-2-22: Suitable for emergency installations as central supply, non-maintained (Z0)

AB-30001



**ABACUS 1** (AB-30001)**Accessory**

---



---

Surface mounting box for easy  
cabling (ABACUS 1)  
**SCE-ABACUS-1**

---