

**NYBRO 1 (NYB-80033)**



**Product description**

Down - 50x80 mm - 1476 mm



microPrim™

**Luminaire Structure**

- Die-cast aluminium end-caps and extruded aluminium profile with powder coating
- Passive thermal management
- Stainless steel fasteners in grade 304 with zinc flake coating (ZFC)
- PMMA diffuser with Opal (UGR <19) and micro prismatic (UGR <13) options for better glare control

- Integral control gear
- Stainless steel brackets and screws for mounting
- Down light distribution only
- Wireless control available through Bluetooth connection

- Daylight and occupancy sensor options
- Emergency module (1 or 3 hours) is available upon request with 3 options (BASIC, SELF-TEST, PRO-DALI)

**Optic**

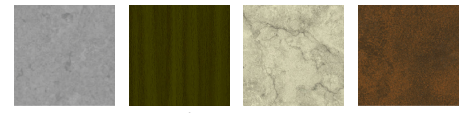


**Product colour**



01 - Black (RAL 9011)    03 - White (RAL 9003)    05 - Matt Silver (RAL 9006)

**Special finishes upon request**



SU01 - Concrete - Urban    SU02 - Softscape - Urban    SU03 - Stone - Urban    SU04 - Corten - Urban



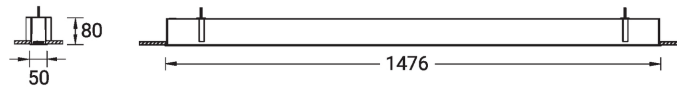
SW01 - Oak - Woodland    SW02 - Walnut - Woodland    SW03 - Pine - Woodland

**NYBRO 1 (NYB-80033)**

**Technical information**

|                      |                       |                        |   |                                |   |
|----------------------|-----------------------|------------------------|---|--------------------------------|---|
| <b>Material</b>      | Aluminium             | <b>Input voltage</b>   | 220-240 V 50/60 Hz  | <b>Operating temperature</b>   | -20 °C to 40 °C   |
| <b>Light source</b>  | 168 LED               | <b>Optic</b>           | O, P  | <b>MacAdam Ellipse</b>         | 3 SDCM  |
| <b>Power</b>         | 30 W                  | <b>Optic value</b>     | Opal, Micro-prismatic   | <b>Lifetime L90B10 (hours)</b> | > 23,000  |
| <b>Lumen</b>         | 2788 lm               | <b>CCT / CRI</b>       | 3000K CRI80, 4000K CRI80  | <b>Lifetime L80B10 (hours)</b> | > 45,000  |
| <b>Efficacy</b>      | 93 lm/W               | <b>Dimming type</b>    | DALI  | <b>Lifetime L80B50 (hours)</b> | > 50,000  |
| <b>Driver option</b> | Integral control gear | <b>Product colours</b> | Black, White, Matt Silver, Concrete - Urban, Softscape - Urban, Stone - Urban, Corten - Urban, Oak - Woodland, Walnut - Woodland, Pine - Woodland | <b>Variants (DALI)</b>         | Compatible with EN/ IEC 60598-2-22: Suitable for emergency installations as central supply, non-maintained (Z0) |
| <b>Driver</b>        | Constant current (CC) |                        |   |                                |   |
|                      |                       | <b>Weight</b>          | 3.7 kg  |                                |   |

NYB-80033



**NYBRO 1** (NYB-80033)**Accessory**

---



---

Continuous-coupler bracket  
(40/50 mm Down profile)  
**A81881**

---