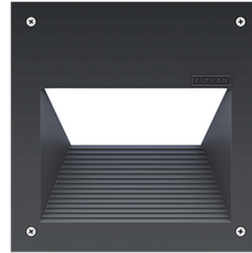


RADO 7 (RA-40701)



Product description

With recessing box



microPrim™

Luminaire Structure

- Die-cast aluminium housing
- Pre-treated before powder coating ensuring high corrosion resistance
- Two cable entries for through wiring
- Stainless steel fasteners in grade 304 with zinc flake coating (ZFC)
- Durable silicone rubber gasket
- Clear toughened glass
- Integral control gear

Optic

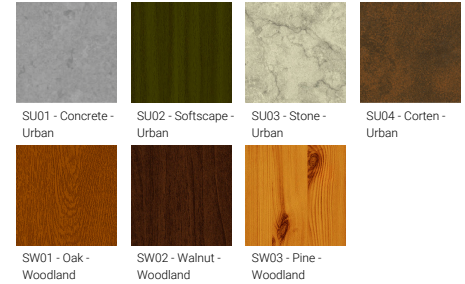


G

Product colour



Special finishes upon request



RADO 7 (RA-40701)

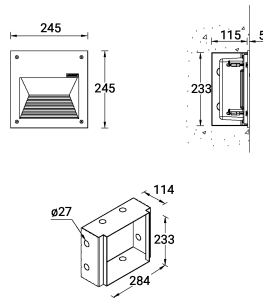
Technical information

Material	Aluminium
Light source	1 COB
Power	20 W
Lumen	1327 - 1454 lm
Efficacy	66 - 73 lm/W
Driver option	Integral control gear
Driver	Constant current (CC)
Input voltage	220-240 V 50/60 Hz

Optic	G
Optic value	42°x69°
CCT / CRI	2700K CRI80, 3000K CRI80, 4000K CRI80
Bug	B0-U1-G2
ULR	1.36%
ULOR	1.36%
CIE flux code n°3	81
Dimming type	On/Off, 1-10V, DALI

Product colours	Black, Dark Grey, White, Matt Silver, Bronze, Concrete - Urban, Softscape - Urban, Stone - Urban, Corten - Urban, Oak - Woodland, Walnut - Woodland, Pine - Woodland
Weight	6.5 kg
Operating temperature	-20 °C to 40 °C
Through wiring	Two cable entries for through wiring
Lens / Reflector / Optic	Clear toughened glass
MacAdam Ellipse	3 SDCM
Lifetime L90B10 (hours)	> 61,000
Variants (On/Off, 1-10V, DALI)	Compatible with EN/ IEC 60598-2-22: Suitable for emergency installations as central supply, non-maintained (Z0)

RA-40701



RADO 7 (RA-40701)

Accessory



DALI Control System
Control-DALI
