

ABERDEEN 2 (ABA-20011-SO-20) (Version 1)**Product description**

Made to order for 20 W Vertical solar PV pole



microPrim™



MOTION SENSOR

Luminaire Structure

- High-efficiency PMMA lens
- Clear acrylic PMMA diffuser

- Integral control gear

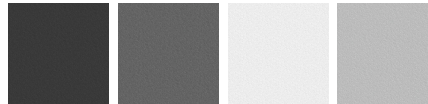
Optic

T2

T3

T4

T5

Product colour

01 - Black (RAL 9011)

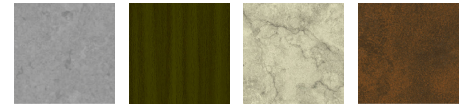
02 - Dark Grey (RAL 7043)

03 - White (RAL 9003)

05 - Matt Silver (RAL 9006)



06 - Bronze (RAL 6014)

Special finishes upon request

SU01 - Concrete - Urban

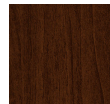
SU02 - Softscape - Urban

SU03 - Stone - Urban

SU04 - Corten - Urban



SW01 - Oak - Woodland



SW02 - Walnut - Woodland



SW03 - Pine - Woodland

ABERDEEN 2 (ABA-20011-SO-20) (Version 1)

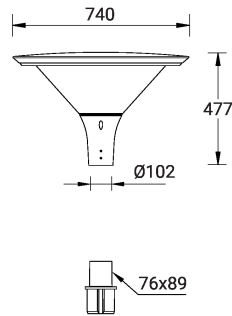
Technical information

Material	Aluminium
Light source	24 LED
Power	20 W
Lumen	2554 - 2691 lm
Efficacy	128 - 135 lm/W
Driver option	Integral control gear
Driver	Constant current (CC)
Input voltage	Solar 36 VDC

Optic	T2, T3, T4, T5
Optic value	142°x 58°, 124°x 86°, 106°x 68°, 118°x 141°
CCT / CRI	3000K CRI80, 4000K CRI80
Bug	B1-U2-G1, B2-U2-G1
ULR	1%, 2%
ULOR	1%, 2%
CIE flux code n°3	94
Dimming type	Dusk to Dawn, 2 Step dimming with motion sensor override, Solar Custom

Product colours	Black, Dark Grey, White, Matt Silver, Bronze, Concrete - Urban, Softscape - Urban, Stone - Urban, Corten - Urban, Oak - Woodland, Walnut - Woodland, Pine - Woodland
Weight	10.5 kg
Operating temperature	-20 °C to 40 °C
Lens / Reflector / Optic	High-efficiency PMMA lens, Clear acrylic PMMA diffuser
MacAdam Ellipse	3 SDCM
Lifetime L90B10 (hours)	> 90,000
Lifetime L80B10 (hours)	> 90,000
Lifetime L80B50 (hours)	> 90,000

ABA-20011



ABERDEEN 2 (ABA-20011-SO-20) (Version 1)**Accessory**



Remote solar charge controller
for Solar Integrated Bollards and
Vertical Solar PV poles
A92691



Vertical solar PV pole 1
SOL-20001



Vertical solar PV pole 2
SOL-20011



Vertical solar PV pole 6
SOL-20051



IoT Module
A95591



Auto dimming feature
auto-dim
