

NIKON 1 (NI-80503-A)



Product description

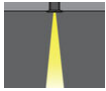
With remote box IP-rated / remote driver - Round - Aluminium frame



Luminaire Structure

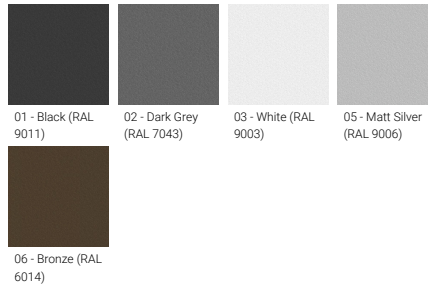
- Die-cast aluminium housing
- Pre-treated before powder coating ensuring high corrosion resistance
- 6 mm thick front ring in stainless steel or aluminium
- Single cable entry
- Stainless steel fasteners in grade 304 with zinc flake coating (ZFC)
- Durable silicone rubber gasket
- Clear toughened glass
- Remote driver (included)

Optic



VN

Product colour



NIKON 1 (NI-80503-A)

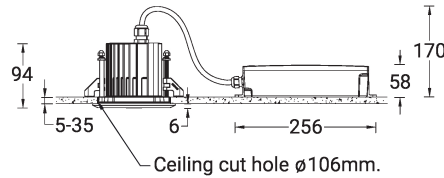
Technical information

| | |
|----------------------|--------------------------|
| Material | Aluminium |
| Light source | 1 LED |
| Power | 11 W |
| Lumen | 640 - 753 lm |
| Efficacy | 58 - 68 lm/W |
| Driver option | Remote driver (included) |
| Driver | Constant current (CC) |
| Input voltage | 220-240 V 50/60 Hz |

| | |
|------------------------------|--|
| Optic | VN |
| Optic value | 8° |
| CCT / CRI | 3000K CRI80, 4000K CRI80 |
| Dimming type | On/Off, 1-10V, DALI |
| Product colours | Black, Dark Grey, White, Matt Silver, Bronze |
| Weight | 0.5 kg |
| Operating temperature | -20 °C to 50 °C |
| Through wiring | Single cable entry |

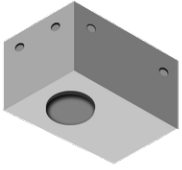
| | |
|---------------------------------------|---|
| Lens / Reflector / Optic | Clear toughened glass |
| MacAdam Ellipse | 3 SDCM |
| Lifetime L90B10 (hours) | > 109,000 |
| Lifetime L80B10 (hours) | > 109,000 |
| Lifetime L80B50 (hours) | > 109,000 |
| Variants (On/Off, 1-10V, DALI) | Compatible with EN/ IEC 60598-2-22: Suitable for emergency installations as central supply, non-maintained (Z0) |

NI-80503-A



NIKON 1 (NI-80503-A)

Accessory



Concrete box modification upon request
CONCRETE-BOX



DALI Control System
Control-DALI
