

NYBRO 4 (NYB-80313)



Product description

Down - 60x80 mm - 890 mm - Trimless



microPrim™

Luminaire Structure

- Die-cast aluminium end-caps and extruded aluminium profile with powder coating
- Passive thermal management
- Stainless steel fasteners in grade 304 with zinc flake coating (ZFC)
- PMMA diffuser with Opal (UGR <19) and micro prismatic (UGR <13) options for better glare control

- Integral control gear
- Stainless steel brackets and screws for mounting
- Down light distribution only
- Wireless control available through Bluetooth connection

- Daylight and occupancy sensor options
- Emergency module (1 or 3 hours) is available upon request with 3 options (BASIC, SELF-TEST, PRO-DALI)

Optic

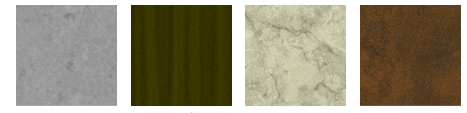


Product colour

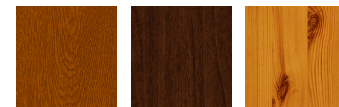


01 - Black (RAL 9011) 03 - White (RAL 9003) 05 - Matt Silver (RAL 9006)

Special finishes upon request



SU01 - Concrete - Urban SU02 - Softscape - Urban SU03 - Stone - Urban SU04 - Corten - Urban



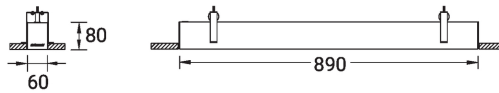
SW01 - Oak - Woodland SW02 - Walnut - Woodland SW03 - Pine - Woodland

NYBRO 4 (NYB-80313)

Technical information

Material	Aluminium	Driver	Constant current (CC)	Product colours	Black, White, Matt Silver, Concrete - Urban, Softscape - Urban, Stone - Urban, Corten - Urban, Oak - Woodland, Walnut - Woodland, Pine - Woodland
Light source	108 LED	Input voltage	220-240 V 50/60 Hz	Weight	3.0 kg
Power	29 W	Optic	O, P	Operating temperature	-20 °C to 40 °C
Lumen	2515 - 3161 lm	Optic value	Opal, Micro-prismatic	Variants (On/Off, 1-10V, DALI)	Compatible with EN/ IEC 60598-2-22: Suitable for emergency installations as central supply, non-maintained (Z0)
Efficacy	87 - 109 lm/W	CCT / CRI	3000K CRI80, 4000K CRI80		
Driver option	Integral control gear	Dimming type	On/Off, 1-10V, DALI		

NYB-80313



NYBRO 4 (NYB-80313)**Accessory**

Continuous-coupler bracket
(60/70 mm Down & 60 mm
Down & Up profile)
A81581



SLESA-U9, DMX Controller 256
CH
A60491



SLESA-U11, DMX Controller
1024 CH
A66891



STICK-KE1, DMX Controller 1024
CH
A60791