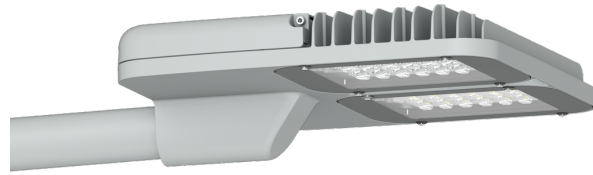


**POWERMISSION 3 (PO39-GP055)**



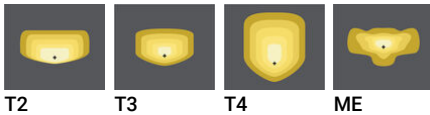
**Luminaire Structure**

- Die-cast aluminium housing
- Pre-treated before powder coating ensuring high corrosion resistance
- Thermal heat dissipation body

- Stainless steel fasteners in grade 304 with zinc flake coating (ZFC)
- Durable silicone rubber gasket
- Clear toughened glass

- Integral control gear
- Surge protection 10kV

**Optic**



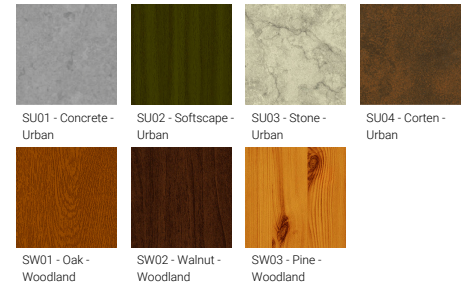
T2 T3 T4 ME

**Product colour**



01 - Black (RAL 9011)    02 - Dark Grey (RAL 7043)    03 - White (RAL 9003)    05 - Matt Silver (RAL 9006)  
06 - Bronze (RAL 6014)

**Special finishes upon request**



SU01 - Concrete - Urban    SU02 - Softscape - Urban    SU03 - Stone - Urban    SU04 - Corten - Urban  
SW01 - Oak - Woodland    SW02 - Walnut - Woodland    SW03 - Pine - Woodland

**POWERMISSION 3 (PO39-GP055)**
**Technical information**

<b>Material</b>	Aluminium	<b>Input voltage</b>	220-240 V 50/60 Hz	<b>Operating temperature</b>	-20 °C to 40 °C
<b>Light source</b>	48 LED	<b>Optic</b>	T2, T3, T4, ME	<b>Lens / Reflector / Optic</b>	Clear toughened glass
<b>Power</b>	54 W	<b>Optic value</b>	142°x46°, 140°x69°, 99°x76°, 136°x41°	<b>MacAdam Ellipse</b>	3 SDCM
<b>Lumen</b>	5843 - 6531 lm	<b>CCT / CRI</b>	3000K CRI80, 4000K CRI80	<b>Lifetime L90B10 (hours)</b>	> 90,000
<b>Efficacy</b>	79 - 88 lm/W	<b>Dimming type</b>	On/Off, 1-10V, DALI	<b>Lifetime L80B10 (hours)</b>	> 90,000
<b>Driver option</b>	Integral control gear	<b>Product colours</b>	Black, Dark Grey, White, Matt Silver, Bronze, Concrete - Urban, Softscape - Urban, Stone - Urban, Corten - Urban, Oak - Woodland, Walnut - Woodland, Pine - Woodland	<b>Lifetime L80B50 (hours)</b>	> 90,000
<b>Driver</b>	Constant current (CC)	<b>Weight</b>	10.6 kg		