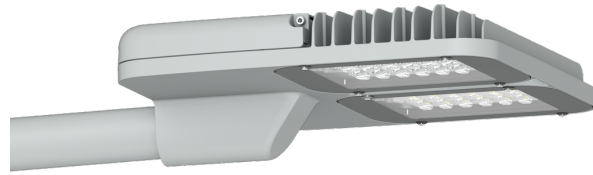


POWERMISSION 3 (PO39-GP110)



microVos

microPrim™



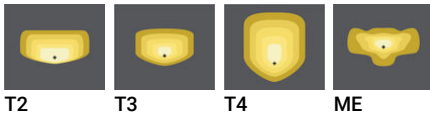
Luminaire Structure

- Die-cast aluminium housing
- Pre-treated before powder coating ensuring high corrosion resistance
- Thermal heat dissipation body

- Stainless steel fasteners in grade 304 with zinc flake coating (ZFC)
- Durable silicone rubber gasket
- Clear toughened glass

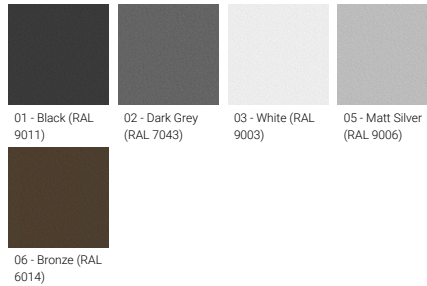
- Integral control gear
- Surge protection 10kV

Optic



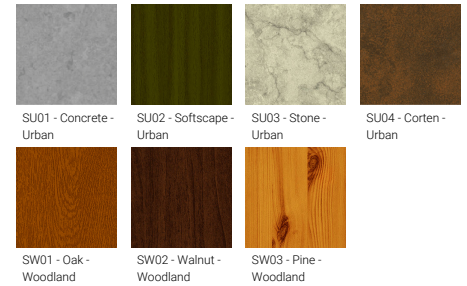
T2 T3 T4 ME

Product colour



01 - Black (RAL 9011) 02 - Dark Grey (RAL 7043) 03 - White (RAL 9003) 05 - Matt Silver (RAL 9006)
06 - Bronze (RAL 6014)

Special finishes upon request



SU01 - Concrete - Urban SU02 - Softscape - Urban SU03 - Stone - Urban SU04 - Corten - Urban
SW01 - Oak - Woodland SW02 - Walnut - Woodland SW03 - Pine - Woodland

POWERMISSION 3 (PO39-GP110)
Technical information

Material	Aluminium
Light source	48 LED
Power	110 W
Lumen	11032 - 12410 lm
Efficacy	104 - 117 lm/W
Driver option	Integral control gear
Driver	Constant current (CC)

Input voltage	220-240 V 50/60 Hz
Optic	T2, T3, T4, ME
Optic value	142°x46°, 140°x69°, 99°x76°, 136°x41°
CCT / CRI	3000K CRI80, 4000K CRI80
Dimming type	On/Off, 1-10V, DALI
Product colours	Black, Dark Grey, White, Matt Silver, Bronze, Concrete - Urban, Softscape - Urban, Stone - Urban, Corten - Urban, Oak - Woodland, Walnut - Woodland, Pine - Woodland
Weight	10.6 kg

Operating temperature	-20 °C to 40 °C
Lens / Reflector / Optic	Clear toughened glass
MacAdam Ellipse	3 SDCM
Lifetime L90B10 (hours)	> 90,000
Lifetime L80B10 (hours)	> 90,000
Lifetime L80B50 (hours)	> 90,000
Variants (On/Off, DALI)	Compatible with EN/ IEC 60598-2-22: Suitable for emergency installations as central supply, non-maintained (Z0)

POWERMISSION 3 (PO39-GP110)**Accessory**

Circuit breaker box IP44
A21291



Double arm mounting
A90976



Motion sensor - PIR - 1-10V - Up
to 3 m
A90191-L2



Motion sensor - PIR - 1-10V - Up
to 6 m
A90191-L3



Motion sensor - PIR - 1-10V - Up
to 12 m
A90191-L7



Remote controller for the motion
sensor - 1-10V (A90191)
A90791



Single arm mounting
A90660



Single arm mounting
A90776