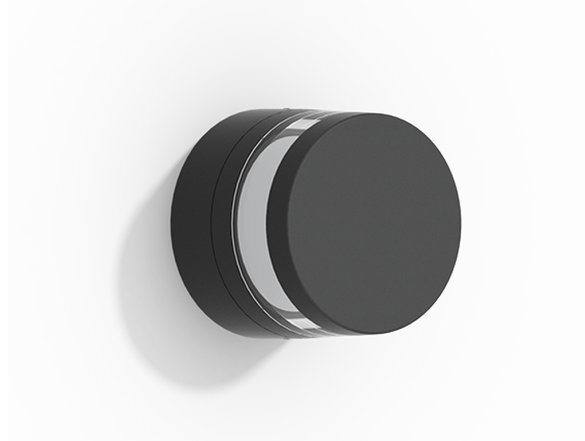


LIGHTWAVE 3 (LW-30001)



microPrim™

Luminaire Structure

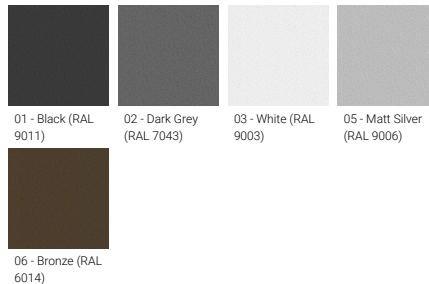
- Die-cast aluminium frame and body
- Pre-treated before powder coating ensuring high corrosion resistance
- Single cable entry
- Stainless steel fasteners in grade 304 with zinc flake coating (ZFC)
- Durable silicone rubber gasket
- Clear UV-stabilised polycarbonate diffuser
- Anodised, high-purity aluminium reflector
- Integral control gear
- Optional surface mounting box for easy wiring or conduit connection when wiring from behind is not possible

Optic

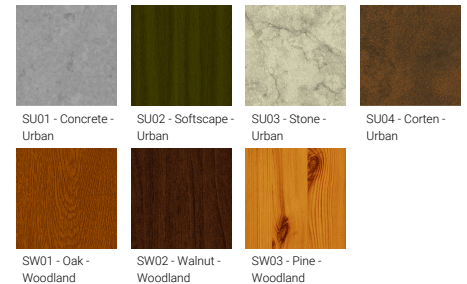


G

Product colour



Special finishes upon request



LIGHTWAVE 3 (LW-30001)

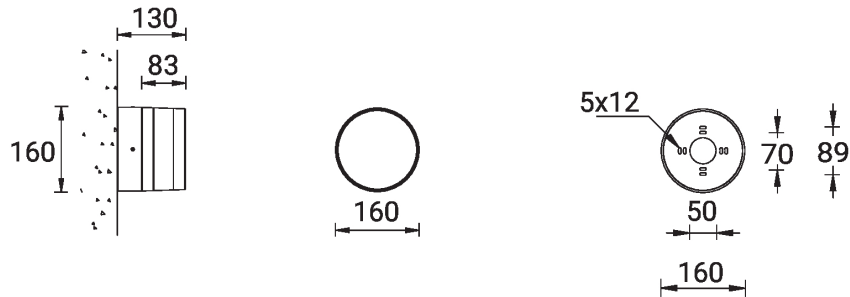
Technical information

Material	Aluminium
Light source	1 COB
Power	20 W
Lumen	270 - 285 lm
Efficacy	14 lm/W
Driver option	Integral control gear
Driver	Constant current (CC)
Input voltage	220-240 V 50/60 Hz

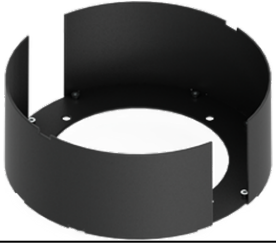
Optic	G
Optic value	180°
CCT / CRI	3000K CRI80, 4000K CRI80
Bug	B0-U3-G1
ULR	50%
ULOR	50%
Dimming type	On/Off, 1-10V, DALI
Product colours	Black, Dark Grey, White, Matt Silver, Bronze, Concrete - Urban, Softscape - Urban, Stone - Urban, Corten - Urban, Oak - Woodland, Walnut - Woodland, Pine - Woodland

Weight	1.9 kg
Operating temperature	-20 °C to 40 °C
Through wiring	Single cable entry
Lens / Reflector / Optic	Clear UV-stabilised polycarbonate diffuser, Anodised, high-purity aluminium reflector
MacAdam Ellipse	3 SDCM
Lifetime L90B10 (hours)	> 61,000
Variants (On/Off, 1-10V, DALI)	Compatible with EN/ IEC 60598-2-22: Suitable for emergency installations as central supply, non-maintained (Z0)

LW-30001



LIGHTWAVE 3 (LW-30001)**Accessory**



Light shield 30°
A30131



Surface mounting box for easy
cabling (LIGHTWAVE 3)
SCE-LIGHTWAVE-3



DALI Control System
Control-DALI