

MALMO 2 (MAL-80113)



Product description

Down - Trimless - 395 mm - Tunable White



microPrim™

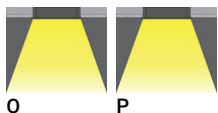
Luminaire Structure

- Extruded aluminium bended profile with powder coating
- Passive thermal management
- Stainless steel fasteners in grade 304 with zinc flake coating (ZFC)
- PMMA diffuser with Opal (UGR <19) and micro prismatic (UGR <13) options for better glare control

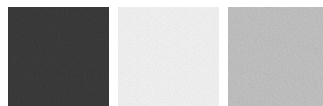
- Integral control gear
- Stainless steel brackets and screws for mounting
- Down light distribution only
- Wireless control available through Bluetooth connection

- Daylight and occupancy sensor options
- Emergency module (1 or 3 hours) is available upon request with 3 options (BASIC, SELF-TEST, PRO-DALI)

Optic

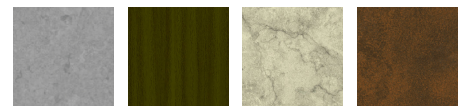


Product colour

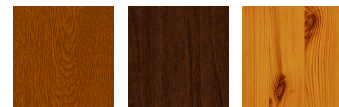


01 - Black (RAL 9011) 03 - White (RAL 9003) 05 - Matt Silver (RAL 9006)

Special finishes upon request



SU01 - Concrete - Urban SU02 - Softscape - Urban SU03 - Stone - Urban SU04 - Corten - Urban



SW01 - Oak - Woodland SW02 - Walnut - Woodland SW03 - Pine - Woodland

MALMO 2 (MAL-80113)

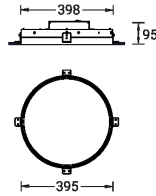
Technical information

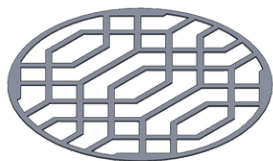
Material	Aluminium
Light source	552 LED
Power	30 W
Lumen	3054 - 3446 lm
Efficacy	56 - 63 lm/W
Driver option	Integral control gear
Driver	Constant current (CC)

Input voltage	220-240 V 50/60 Hz
Optic	O, P
Optic value	107°, 94°
CCT / CRI	TW (2700K - 6500K)
Bug	B1-U0-G1, B2-U0-G1
ULR	0%
ULOR	0%

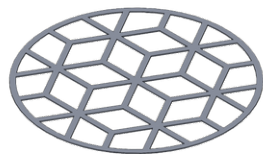
CIE flux code n°3	96, 97
Dimming type	DALI
Product colours	Black, White, Matt Silver, Concrete - Urban, Softscape - Urban, Stone - Urban, Corten - Urban, Oak - Woodland, Walnut - Woodland, Pine - Woodland
Weight	3.4 kg
Operating temperature	-20 °C to 40 °C
Variants (DALI)	Compatible with EN/ IEC 60598-2-22: Suitable for emergency installations as central supply, non-maintained (Z0)

MAL-80113

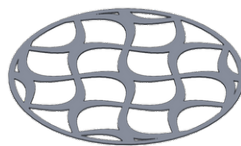


MALMO 2 (MAL-80113)**Accessory**

Decorative pattern - Type A for
MALMO 400 mm
A90921



Decorative pattern - Type B for
MALMO 400 mm
A92321



Decorative pattern - Type C for
MALMO 400 mm
A93721



Wireless bluetooth converter
A90291



Xpress wireless switch
A90591



DALI Control System
Control-DALI