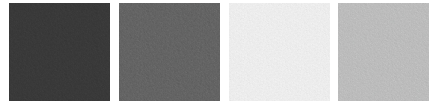
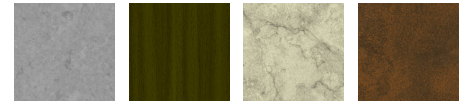


POWERMISSION 2 (P029-GP041-SO-80) (Version 1)**Product description**

Made to order for 80 W Vertical solar PV pole

**Luminaire Structure**

- Clear toughened glass
- High-efficiency polycarbonate lens
- Integral control gear

Optic**T2** **T3** **T4****Product colour****01 - Black** (RAL 9011) **02 - Dark Grey** (RAL 7043) **03 - White** (RAL 9003) **05 - Matt Silver** (RAL 9006)**06 - Bronze** (RAL 6014)**Special finishes upon request****SU01 - Concrete - Urban** **SU02 - Softscape - Urban** **SU03 - Stone - Urban** **SU04 - Corten - Urban****SW01 - Oak - Woodland** **SW02 - Walnut - Woodland** **SW03 - Pine - Woodland**

POWERMISSION 2 (PO29-GP041-SO-80) (Version 1)

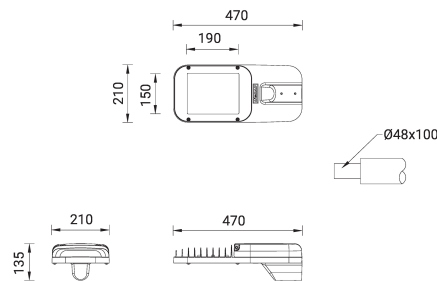
Technical information

Material	Aluminium
Light source	24 LED
Power	80 W
Lumen	8141 - 9022 lm
Efficacy	102 - 113 lm/W
Driver option	Integral control gear
Driver	Constant current (CC)

Input voltage	Solar 36 VDC
Optic	T2, T3, T4
Optic value	142°x53°, 141°x69°, 99°x79°
CCT / CRI	3000K CRI80, 4000K CRI80
Bug	B1-U0-G1, B2-U0-G1, B2-U0-G2
ULR	<1%
ULOR	<1%

CIE flux code n°3	97
Dimming type	Dusk to Dawn, 2 Step dimming with motion sensor override, Solar Custom
Product colours	Black, Dark Grey, White, Matt Silver, Bronze, Concrete - Urban, Softscape - Urban, Stone - Urban, Corten - Urban, Oak - Woodland, Walnut - Woodland, Pine - Woodland
Weight	4.8 kg
Operating temperature	-20 °C to 40 °C
Lens / Reflector / Optic	Clear toughened glass, High-efficiency polycarbonate lens

PO29-GP041



POWERMISSION 2 (P029-GP041-SO-80) (Version 1)**Accessory**



Remote solar charge controller
for Solar Integrated Bollards and
Vertical Solar PV poles
A92691



Vertical solar PV pole 3
SOL-20021



Vertical solar PV pole 4
SOL-20031



Vertical solar PV pole 5
SOL-20041



Vertical solar PV pole 7
SOL-20061



IoT Module
A95591
