

BERLIN 2 (BEB-80011)**Product description**

Small

**Luminaire Structure**

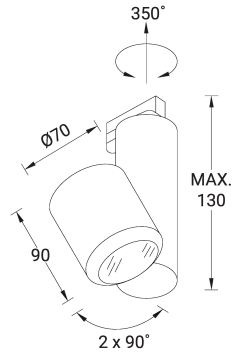
- Die-cast aluminium housing heat sink
- Adjustable: Tilt 2x90°, Rotation 350°
- With powder coating
- Aluminium reflector
- Integral control gear
- With 3-phase universal adapter

BERLIN 2 (BEB-80011)

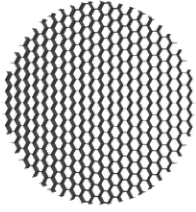
Technical information

Material	Aluminium	Driver option	Integral control gear	Weight	1.1 kg
Light source	1 COB	Driver	Constant current (CC)	Operating temperature	-20 °C to 40 °C
Power	15 W	Input voltage	220-240 V 50/60 Hz	Lens / Reflector / Optic	Aluminium reflector

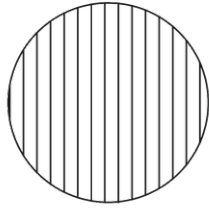
BERLIN 2
BEB-80011



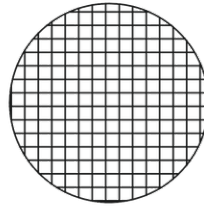
BERLIN 2 (BEB-80011)**Accessory**



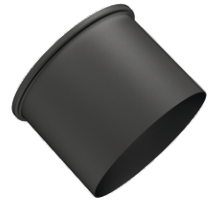
Honeycomb louvre
A80014



Linear spread lens
A80012



Prismatic diffusion lens
A80013



Snoot (Black)
A80011
