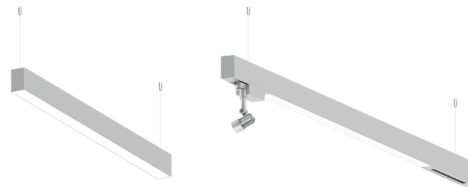


**NYBRO 10 (NYB-90355)**



**Product description**

Down - 60x95 mm - 2330 mm - RGBW



microPrim™

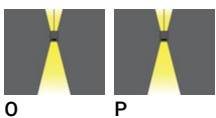
**Luminaire Structure**

- Die-cast aluminium end-caps and extruded aluminium profile with powder coating
- Passive thermal management
- Single cable entry
- Stainless steel fasteners in grade 304 with zinc flake coating (ZFC)
- Durable silicone rubber gasket

- PMMA diffuser with Opal (UGR <19) and micro prismatic (UGR <13) options for better glare control
- Integral control gear
- Stainless steel brackets and screws for mounting
- Up and down light distribution options
- Wireless control available through Bluetooth connection

- Daylight and occupancy sensor options
- Emergency module (1 or 3 hours) is available upon request with 3 options (BASIC, SELF-TEST, PRO-DALI)
- Track can be integrated into NYBRO products upon request and upon receipt of design drawings

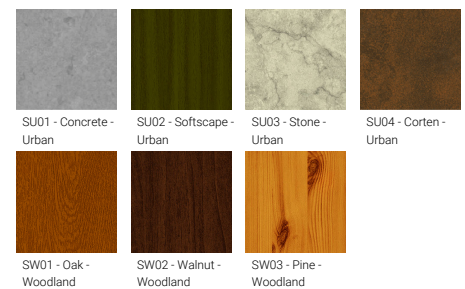
**Optic**



**Product colour**



**Special finishes upon request**

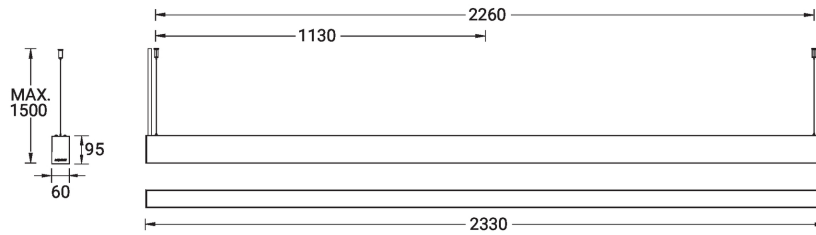


**NYBRO 10 (NYB-90355)**

**Technical information**

<b>Material</b>	Aluminium	<b>Driver option</b>	Integral control gear	<b>CCT / CRI</b>	RGBW40
<b>Light source</b>	384 & 368 LED	<b>Driver</b>	Constant current (CC)	<b>Dimming type</b>	Bluetooth
<b>Power</b>	164 W	<b>Input voltage</b>	220-240 V 50/60 Hz	<b>Product colours</b>	Black, White, Matt Silver, Concrete - Urban, Softscape
<b>Lumen</b>	11374 lm	<b>Optic</b>	O, P		- Urban, Stone - Urban, Corten - Urban, Oak - Woodland, Walnut - Woodland, Pine - Woodland
<b>Efficacy</b>	69 lm/W	<b>Optic value</b>	Opal, Micro-prismatic	<b>Weight</b>	8.2 kg
				<b>Operating temperature</b>	-20 °C to 40 °C

NYB-90355

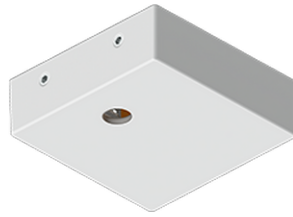


**NYBRO 10 (NYB-90355)**

**Accessory**



Continuous-coupler bracket  
(60/70 mm Down & 60 mm  
Down & Up profile)  
**A81581**



Supply cable surface mounting  
box  
**A80981**



Xpress wireless switch  
**A90591**



Integrated track - 3 phase - DALI  
for NYBRO  
**A81491**



Integrated track - 3 phase - On-  
off for NYBRO  
**A81391**



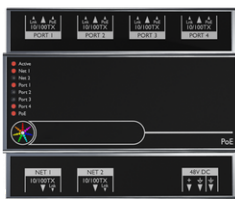
SLESA-U9, DMX Controller 256  
CH  
**A60491**



SLESA-U11, DMX Controller  
1024 CH  
**A66891**



TPC (Touch Panel Controller) &  
EXT (Extension) 1 Universe  
**A64491**



PoE Connect  
**A64591**



TPC Touch Screen & LPC  
Controller DMX 2 Universe  
**A64691**



DMX/RDM Splitter - 1 channel  
input, 4 channels output  
**A64791**



Cloud Remote Management  
**A64991**



STICK-KE2, DMX Controller 1024  
CH  
**A65091**



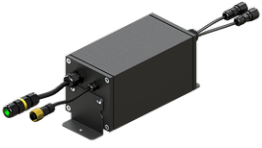
TPS Touch Panel Station  
**A65191**



LPCX (Lighting Playback  
Controller X)  
**A66991**



EDN 10 (Ethernet Data Node 10  
Universes)  
**A65391**

**NYBRO 10** (NYB-90355)

---

DMX splitter & amplifier within  
an IP65 box  
**A63991**

---



---

DINA-DR MICRO, DMX Lighting  
Controller & Power Adapter, 60  
CH  
**A67291**

---