

ZAAB 3 (ZA-20011) (Version 2)**Product description**

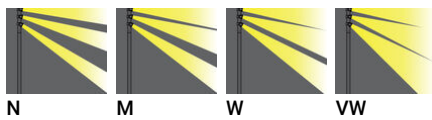
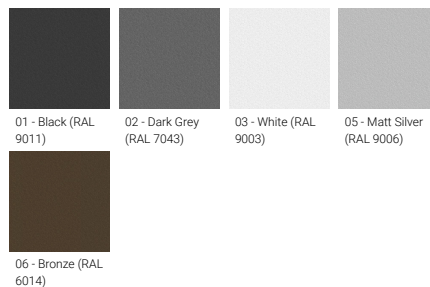
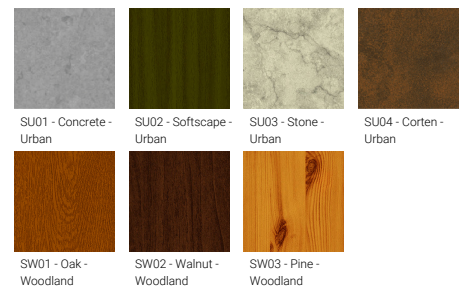
With mounting box - Double



microPrim™

Luminaire Structure

- Die-cast aluminium housing
- Pre-treated before powder coating ensuring high corrosion resistance
- Single cable entry
- One cable gland supplied with 2 m of 3x1.0 sqmm outdoor cable
- Stainless steel fasteners in grade 304 with zinc flake coating (ZFC)
- Durable silicone rubber gasket
- High-efficiency optical reflector
- Clear toughened glass
- Integral control gear

Optic**Product colour****Special finishes upon request**

ZAAB 3 (ZA-20011) (Version 2)

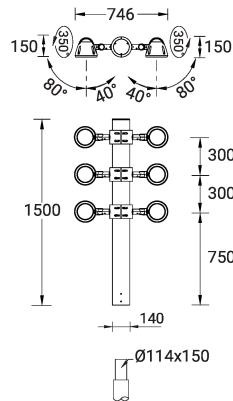
Technical information

Material	Aluminium
Light source	6 x 1 COB
Power	240 W
Lumen	25164 - 30084 lm
Efficacy	105 - 125 lm/W
Driver option	Integral control gear
Driver	Constant current (CC)
Input voltage	220-240 V 50/60 Hz
Optic	N, M, W, VW
Optic value	16°, 26°, 42°, 65°

CCT / CRI	3000K CRI80, 4000K CRI80
Bug	B3-U0-G0, B3-U0-G1
ULR	<1%
ULOR	<1%
CIE flux code n°3	100
Dimming type	On/Off, 1-10V, DALI
Product colours	Black, Dark Grey, White, Matt Silver, Bronze, Concrete - Urban, Softscape - Urban, Stone - Urban, Corten - Urban, Oak - Woodland, Walnut - Woodland, Pine - Woodland
Weight	43.8 kg
Operating temperature	-20 °C to 40 °C
EPA (m2)	0.487

Cable	One cable gland supplied with 2 m of 3x1.0 sqmm outdoor cable
Through wiring	Single cable entry
Lens / Reflector / Optic	High-efficiency optical reflector, Clear toughened glass
MacAdam Ellipse	3 SDCM
Lifetime L90B10 (hours)	> 50,700
Lifetime L80B10 (hours)	> 63,500
Lifetime L80B50 (hours)	> 63,500
Variants (1-10V, DALI)	Compatible with EN/ IEC 60598-2-22: Suitable for emergency installations as central supply, non-maintained (Z0)

ZA-20011



Accessory



Anti-glare visor
A52631



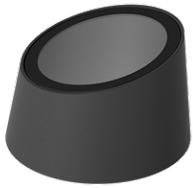
Anti-glare hood
A52731



Anti-glare louvre
A51721



Linear spread lens
A51014



Snoot
A54231



DALI Control System
Control-DALI

Please contact the factory for technical details if you wish to use Anti-glare accessories, Colour filters, Lenses and slip glasses in combination.