

**BERLIN 1** (BEB-80001)**Product description**

---

Medium

**Luminaire Structure**

---

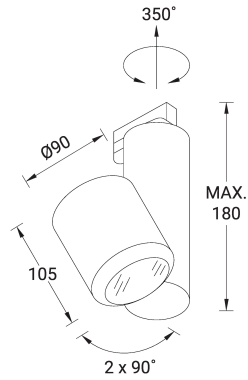
- Die-cast aluminium housing heat sink
- Adjustable: Tilt 2x90°, Rotation 350°
- With powder coating
- Aluminium reflector
- Integral control gear
- With 3-phase universal adapter

**BERLIN 1** (BEB-80001)

**Technical information**

<b>Material</b>	Aluminium	<b>Driver option</b>	Integral control gear	<b>Weight</b>	0.7 kg
<b>Light source</b>	1 COB	<b>Driver</b>	Constant current (CC)	<b>Operating temperature</b>	-20 °C to 40 °C
<b>Power</b>	30 W	<b>Input voltage</b>	220-240 V 50/60 Hz	<b>Lens / Reflector / Optic</b>	Aluminium reflector

BERLIN 1  
BEB-80001



**BERLIN 1 (BEB-80001)****Accessory**

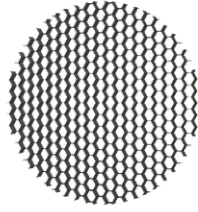
---



---

Anti glare flaps (Black)  
**A80015**

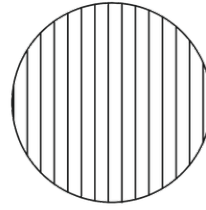
---



---

Honeycomb louvre  
**A80019**

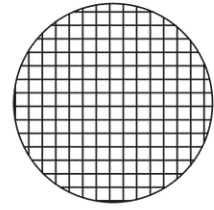
---



---

Linear spread lens  
**A80017**

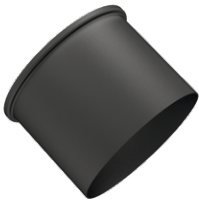
---



---

Prismatic diffusion lens  
**A80018**

---



---

Snoot (Black)  
**A80016**

---