

**FORREY 12** (FOR-20042-SO-40) (Version 1)



**Product description**

Made to order for 40 W Vertical solar PV pole

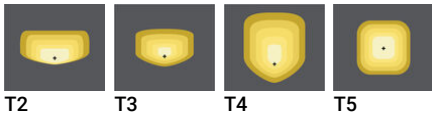


**Luminaire Structure**

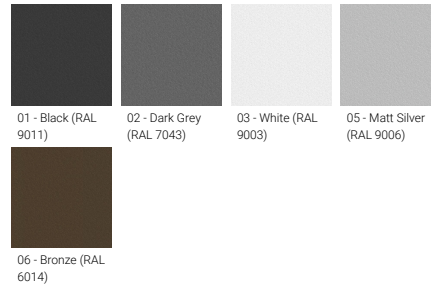
- High-efficiency PMMA lens

- Integral control gear

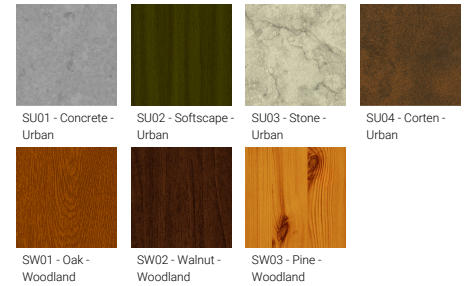
**Optic**



**Product colour**



**Special finishes upon request**



**FORREY 12 (FOR-20042-SO-40) (Version 1)**

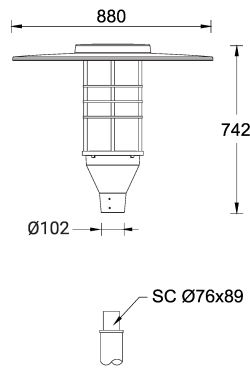
**Technical information**

<b>Material</b>	Aluminium
<b>Light source</b>	1 COB
<b>Power</b>	40 W
<b>Lumen</b>	3409 - 3964 lm
<b>Efficacy</b>	85 - 99 lm/W
<b>Driver option</b>	Integral control gear

<b>Driver</b>	Constant current (CC)
<b>Input voltage</b>	Solar 36 VDC
<b>Optic</b>	T2, T3, T4, T5
<b>Optic value</b>	140°x100°, 132°x103°, 137°x117°, 73°
<b>CCT / CRI</b>	3000K CRI80, 4000K CRI80
<b>Dimming type</b>	Dusk to Dawn, 2 Step dimming with motion sensor override, Solar Custom

<b>Product colours</b>	Black, Dark Grey, White, Matt Silver, Bronze, Concrete - Urban, Softscape - Urban, Stone - Urban, Corten - Urban, Oak - Woodland, Walnut - Woodland, Pine - Woodland
<b>Weight</b>	17.0 kg
<b>Operating temperature</b>	-20 °C to 40 °C
<b>Lens / Reflector / Optic</b>	High-efficiency PMMA lens

FOR-20042



**FORREY 12** (FOR-20042-SO-40) (Version 1)

**Accessory**

---



Remote solar charge controller  
for Solar Integrated Bollards and  
Vertical Solar PV poles  
**A92691**

---



Vertical solar PV pole 1  
**SOL-20001**

---



Vertical solar PV pole 2  
**SOL-20011**

---



Vertical solar PV pole 6  
**SOL-20051**

---



Auto dimming feature  
**auto-dim**

---