

GAVLE 3 (GAV-80171)



Product description

Down - 60x90 mm - 5000 mm

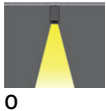


microPrim™

Luminaire Structure

- Extruded aluminium bended profile with powder coating
- Passive thermal management
- Stainless steel fasteners in grade 304 with zinc flake coating (ZFC)
- Opal PMMA diffuser (UGR <19) for glare control
- Integral control gear for On/Off (-ND), DALI (-DA). Remote driver is included for 1-10V (-DI)
- Steel brackets for ceiling down mounting option
- Up and down light distribution options
- Wireless control available through Bluetooth connection

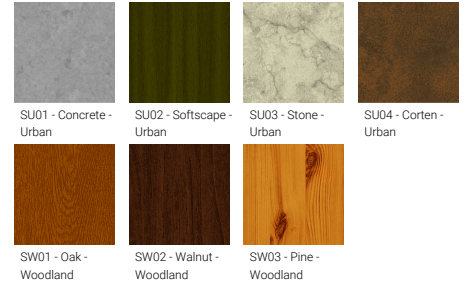
Optic



Product colour



Special finishes upon request



GAVLE 3 (GAV-80171)

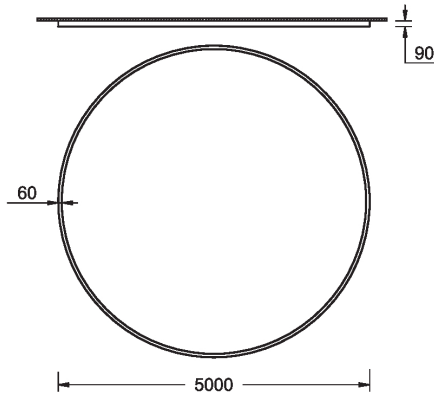
Technical information

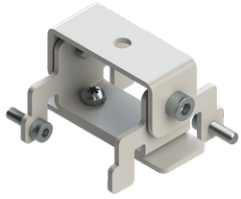
Material	Aluminium
Light source	1920 LED
Power	250 W
Lumen	23765 - 24807 lm
Efficacy	95 - 99 lm/W
Driver option	Integral control gear for On/Off (-ND), DALI (-DA). Remote driver is included for 1-10V (-DI)
Driver	Constant current (CC)

Input voltage	220-240 V 50/60 Hz
Optic	0
Optic value	102°
CCT / CRI	3000K CRI80, 4000K CRI80
Bug	B4-U1-G3
ULR	0%, <1%
ULOR	0%, <1%

CIE flux code n°3	96
Dimming type	On/Off, 1-10V, DALI
Product colours	Black, White, Matt Silver, Concrete - Urban, Softscape - Urban, Stone - Urban, Corten - Urban, Oak - Woodland, Walnut - Woodland, Pine - Woodland
Weight	40.6 kg
Operating temperature	-20 °C to 40 °C
Variants (1-10V, DALI)	Compatible with EN/ IEC 60598-2-22: Suitable for emergency installations as central supply, non-maintained (Z0)

GAV-80171



GAVLE 3 (GAV-80171)**Accessory**

Ceiling-mounting bracket (40
mm profile)
A81381



Wireless bluetooth converter
A90291



Xpress wireless switch
A90591



DALI Control System
Control-DALI