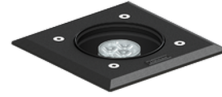


HARRIER 2 (HA-60395-A)



Product description

With remote box IP-rated / remote driver / recessing box - Square - Aluminium frame



microPrim™

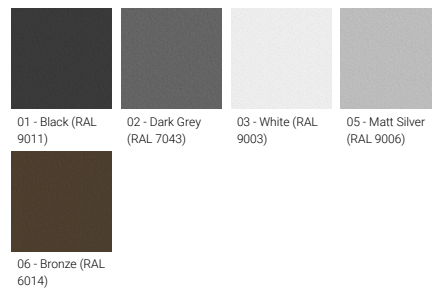
Luminaire Structure

- Die-cast aluminium housing
- Pre-treated before powder coating ensuring high corrosion resistance
- 6 mm thick front ring in grade 316 stainless steel or aluminium
- Single cable entry, through wiring upon request
- Stainless steel fasteners in grade 316
- Durable silicone rubber gasket
- Clear toughened glass
- High-efficiency PMMA lens
- Remote driver (included)
- Recessing box in high-density polyethylene is included
- Suitable for walk-over with a maximum load of 200 kg

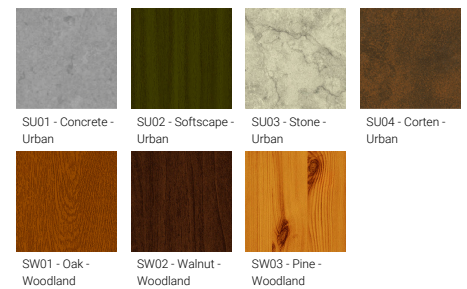
Optic



Product colour



Special finishes upon request



HARRIER 2 (HA-60395-A)

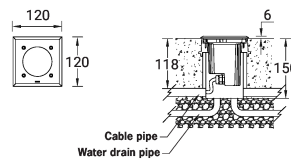
Technical information

Material	Aluminium
Light source	3 LED
Power	8 W
Lumen	531 - 733 lm
Efficacy	66 - 92 lm/W
Driver option	Remote driver (included)
Driver	Constant current (CC)

Input voltage	220-240 V 50/60 Hz
Optic	N, M, W
Optic value	24°, 28°, 45°
CCT / CRI	3000K CRI80, 4000K CRI80
Bug	B0-U4-G0
ULR	100%
ULOR	100%

Dimming type	On/Off, 1-10V, DALI
Product colours	Black, Dark Grey, White, Matt Silver, Bronze, Concrete - Urban, Softscape - Urban, Stone - Urban, Corten - Urban, Oak - Woodland, Walnut - Woodland, Pine - Woodland
Weight	0.5 kg
Operating temperature	-20 °C to 50 °C
Through wiring	Single cable entry, through wiring upon request
Lens / Reflector / Optic	Clear toughened glass, High-efficiency PMMA lens
Variants (On/Off, 1-10V, DALI)	Compatible with EN/ IEC 60598-2-22: Suitable for emergency installations as central supply, non-maintained (Z0)

HA-60395-A



HARRIER 2 (HA-60395-A)**Accessory**



Connector IP68 3 Pin Power
A62591



DALI Control System
Control-DALI



Connector IP68 5 Pin Power +
Signal
A613191
