

MALMO 4 (MAL-90115)



Product description

Down (Optic) & Up (Optic 2nd) - 390 mm - RGBW DMX



microPrim™

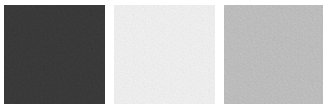
Luminaire Structure

- Extruded aluminium bended profile with powder coating
- Passive thermal management
- Stainless steel fasteners in grade 304 with zinc flake coating (ZFC)
- PMMA diffuser with Opal (UGR <19) and micro prismatic (UGR <13) options for better glare control

- Remote driver (included)
- Stainless steel, adjustable, suspension (1.5 m) complete with electrical wires in white for mounting
- Up and down light distribution options
- Wireless control available through Bluetooth connection

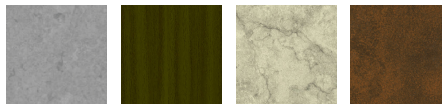
- Daylight and occupancy sensor options
- Emergency module (1 or 3 hours) is available upon request with 3 options (BASIC, SELF-TEST, PRO-DALI)

Product colour



01 - Black (RAL 9011) 03 - White (RAL 9003) 05 - Matt Silver (RAL 9006)

Special finishes upon request



SU01 - Concrete - Urban SU02 - Softscape - Urban SU03 - Stone - Urban SU04 - Corten - Urban



SW01 - Oak - Woodland SW02 - Walnut - Woodland SW03 - Pine - Woodland

MALMO 4 (MAL-90115)

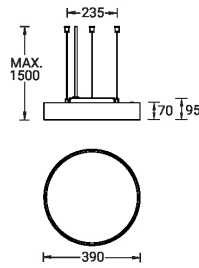
Technical information

Material	Aluminium
Light source	1104 & 128 LED
Power	74 W
Lumen	1532 lm
Driver option	Remote driver (included)
Driver	Constant current (CC)

Input voltage	220-240 V 50/60 Hz
Optic	O, P
Optic value	107°, 94°
Optic (2nd)	0
Optic (2nd) value	110°
CCT / CRI	RGBW30, RGBW40

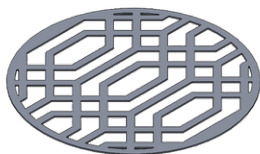
Dimming type	DMX, DMX/RDM
Product colours	Black, White, Matt Silver, Concrete - Urban, Softscape - Urban, Stone - Urban, Corten - Urban, Oak - Woodland, Walnut - Woodland, Pine - Woodland
Weight	3.0 kg
Operating temperature	-20 °C to 40 °C
Variants (DMX/RDM)	Compatible with EN/ IEC 60598-2-22: Suitable for emergency installations as central supply, non-maintained (Z0)

MAL-90115

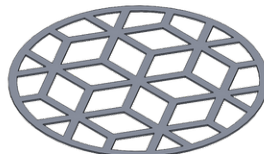


MALMO 4 (MAL-90115)**Accessory**

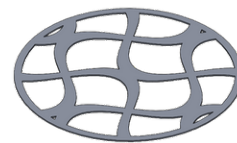
Supply cable surface mounting
box
A80981



Decorative pattern - Type A for
MALMO 300 mm
A90821



Decorative pattern - Type B for
MALMO 300 mm
A92221



Decorative pattern - Type C for
MALMO 300 mm
A93621



DMX Control System
Control-DMX



DMX/RDM Control System
Control-DMX-RDM