

**PRAGUE 7 (PRA-10063)**



**Product description**

200x80 mm - 1000 mm - 10.5 hours of operation time (2 Step dimming with motion sensor override) - 2 days of autonomy



microPrim™



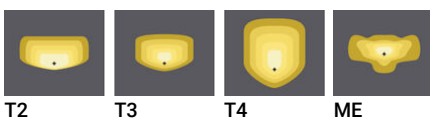
**Luminaire Structure**

- Die-cast aluminium housing
- Extruded aluminium column
- Pre-treated before powder coating ensuring high corrosion resistance
- Stainless steel fasteners in grade 304 with zinc flake coating (ZFC)
- Durable silicone rubber gasket
- Clear toughened glass
- High-efficiency PMMA lens
- Integral control gear

- Solar panel mono-crystalline silicon high-efficiency 4x10W
- Lithium Iron Phosphate (LiFePO4 ) battery 18Ah 12 VDC
- Solar charger controller system 12V 10A
- Luminaires operation time depends on the weather conditions
- Full automatic electronic protection function against short circuit, overcurrent, overload, overvoltage and high temperature
- Standard: Off-grid, 100% solar, not connected to the utility grid. Utility grid connection is available upon request
- Without any sun (Autonomy), the battery would last for a maximum 5 days
- \* Motion sensor integrated

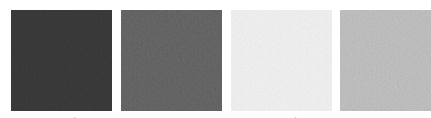
- Different dimming options are available
- STD: 2 Step dimming with motion sensor override (3 hours: 60% without movement, 100% for 1 minute when the motion sensor activated. After 3 hours: 30% without movement, 60% for 1 minute when the motion sensor activated)
- ND: Dusk to Dawn, CT: Custom examples are 5 Step dimming, Custom hours, Custom dimming levels (Step length and minimum dim level is 10%)
- Maximum 27 hours of operation time (Dimming with motion sensor override)
- Remote solar charge controller can be ordered as an accessory
- Autonomy and Operation time calculations are done with the following information: Peak Sun-Hour (PSH) is 3 hours. Hours of operation are 12 hours per day. Detection of movement is 10 times per hour.
- Autonomy and Operation time calculations are only indicative and will depend on several variable factors. Please contact the factory to determine the specific calculations for your project.

**Optic**



T2 T3 T4 ME

**Product colour**

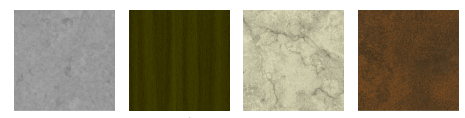


01 - Black (RAL 9011) 02 - Dark Grey (RAL 7043) 03 - White (RAL 9003) 05 - Matt Silver (RAL 9006)

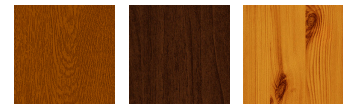


06 - Bronze (RAL 6014)

**Special finishes upon request**



SU01 - Concrete - Urban SU02 - Softscape - Urban SU03 - Stone - Urban SU04 - Corten - Urban



SW01 - Oak - Woodland SW02 - Walnut - Woodland SW03 - Pine - Woodland

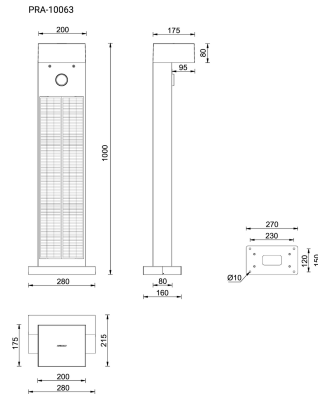
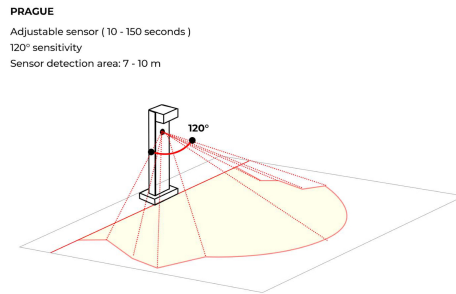
**PRAGUE 7 (PRA-10063)**

**Technical information**

<b>Material</b>	Aluminium
<b>Light source</b>	8 LED
<b>Power</b>	6 W
<b>Lumen</b>	584 - 707 lm
<b>Efficacy</b>	97 - 118 lm/W
<b>Driver option</b>	Integral control gear
<b>Driver</b>	Constant current (CC)

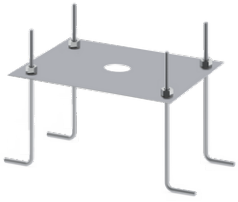
<b>Input voltage</b>	Solar
<b>Optic</b>	M, W, EW, T2, T3, T4, ME
<b>Optic value</b>	30°x21°, 53°x31°, 104°x68°, 138°x55°, 122°x76°, 103°x68°, 136x56°
<b>CCT / CRI</b>	2700K CRI80, 3000K CRI80, 4000K CRI80
<b>Bug</b>	B0-U1-G0, B0-U2-G0, B0-U2-G1
<b>ULR</b>	1%, 2%, 3%, 7%, 8%, 9%, <1%
<b>ULOR</b>	0.09, 1%, 2%, 3%, 7%, 8%, 9%

<b>CIE flux code n°3</b>	95, 96, 97, 98
<b>Dimming type</b>	Dusk to Dawn, 2 Step dimming with motion sensor override, Solar Custom
<b>Product colours</b>	Black, Dark Grey, White, Matt Silver, Bronze, Concrete - Urban, Softscape - Urban, Stone - Urban, Corten - Urban, Oak - Woodland, Walnut - Woodland, Pine - Woodland
<b>Weight</b>	16.2 kg
<b>Operating temperature</b>	-20 °C to 40 °C
<b>Lens / Reflector / Optic</b>	Clear toughened glass, High-efficiency PMMA lens



**PRAGUE 7 (PRA-10063)****Accessory**

---



---

Anchor bolt  
**A13791**

---



---

Remote solar charge controller  
for Solar Integrated Bollards and  
Vertical Solar PV poles  
**A92691**

---



---

Auto dimming feature  
**auto-dim**

---