

**CINATI 1** (CI-30121) (Version 3)



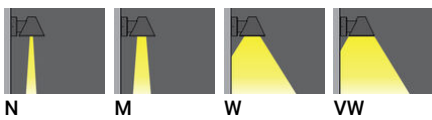
**Luminaire Structure**

- Die-cast aluminium housing and frame
- Pre-treated before powder coating ensuring high corrosion resistance
- Two cable entries for through wiring
- Stainless steel fasteners in grade 304 with zinc flake coating (ZFC)

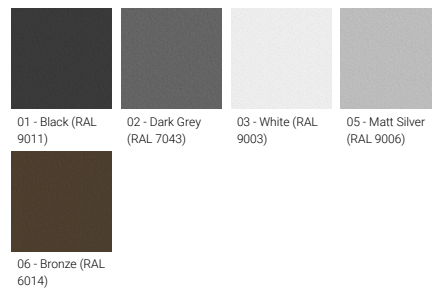
- Durable silicone rubber gasket
- High-efficiency optical reflector
- Clear toughened glass
- Integral control gear

- Optional surface mounting box for easy wiring or conduit connection when wiring from behind is not possible

**Optic**



**Product colour**



**Special finishes upon request**

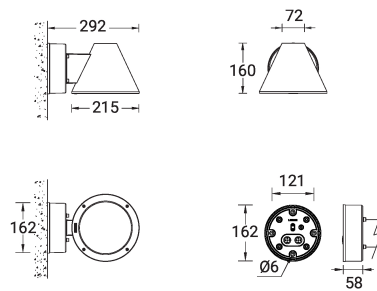


**CINATI 1 (CI-30121) (Version 3)**

**Technical information**

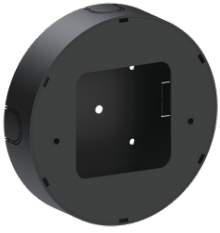
<b>Material</b>	Aluminium	<b>Optic</b>	N, M, W, VW	<b>Product colours</b>	Black, Dark Grey, White, Matt Silver, Bronze, Concrete - Urban, Softscape - Urban, Stone - Urban, Corten - Urban, Oak - Woodland, Walnut - Woodland, Pine - Woodland
<b>Light source</b>	1 COB	<b>Optic value</b>	9°, 20°, 38°, 71°	<b>Weight</b>	3.3 kg
<b>Power</b>	20 W	<b>CCT / CRI</b>	2700K CRI80, 3000K CRI80, 4000K CRI80	<b>Operating temperature</b>	-20 °C to 40 °C
<b>Lumen</b>	2093 - 2624 lm	<b>Bug</b>	B2-U0-G0	<b>Through wiring</b>	Two cable entries for through wiring
<b>Efficacy</b>	105 - 131 lm/W	<b>ULR</b>	<1%	<b>Lens / Reflector / Optic</b>	High-efficiency optical reflector, Clear toughened glass
<b>Driver option</b>	Integral control gear	<b>ULOR</b>	<1%	<b>MacAdam Ellipse</b>	3 SDCM
<b>Driver</b>	Constant current (CC)	<b>CIE flux code n°3</b>	100, 99	<b>Lifetime L90B10 (hours)</b>	> 61,000
<b>Input voltage</b>	220-240 V 50/60 Hz	<b>Dimming type</b>	On/Off, 1-10V, DALI	<b>Variants (On/Off, 1-10V)</b>	Compatible with EN/ IEC 60598-2-22: Suitable for emergency installations as central supply, non-maintained (Z0)

CI-30121



**CINATI 1** (CI-30121) (Version 3)**Accessory**

---



---

Surface mounting box for easy  
cabling (CINATI 1)  
**SCE-CINATI-1**

---



---

DALI Control System  
**Control-DALI**

---